

LOC/DME I-VQX 110.75 Chan 44(Y)	APP CRS 274°	Rwy ldg TDZE Apt Elev	7500 667 680
--	------------------------	-----------------------------	---

ILS RWY 28L (CAT II & III)

CHICAGO O'HARE INTL (ORD)

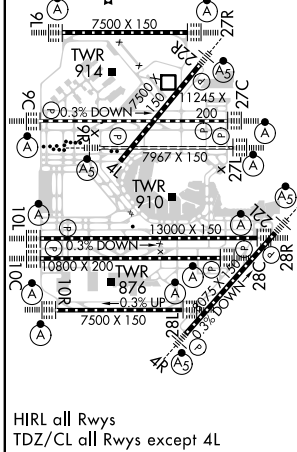
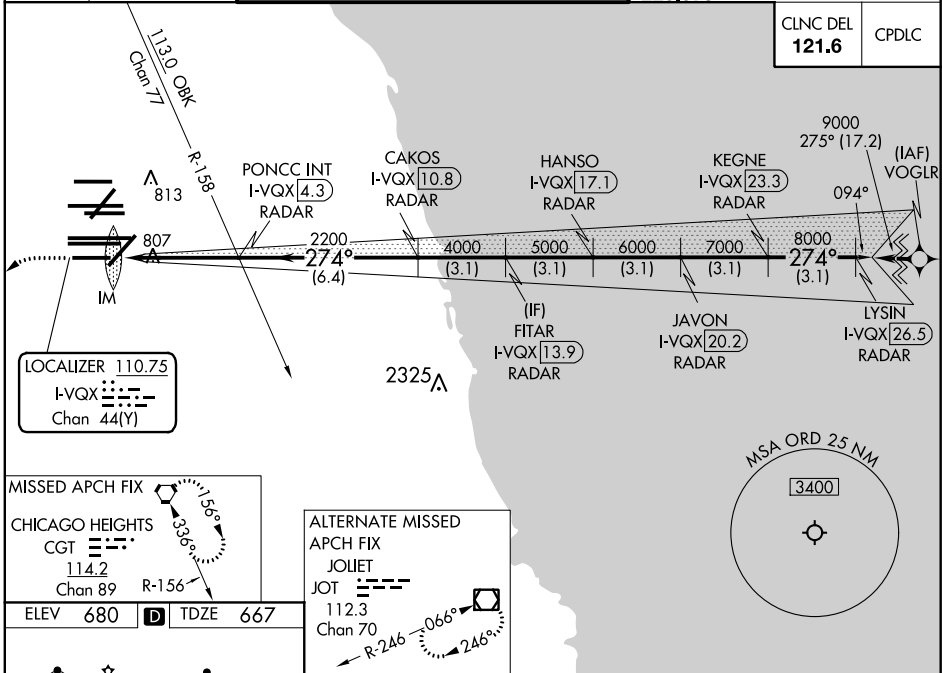
From VOGLR: RNAV 1-GPS required.
 Aircraft not GPS equipped - RADAR required for procedure entry.
 DME or RADAR required.

ALSIF-2

MISSED APPROACH:
 Climb to 1200 then
 climbing left turn to
 4000 direct CGT
 VORTAC and hold.

Simultaneous approach authorized.
 CAT II: RVR 1000 authorized with specific OPSPEC, MSPEC,
 or LOA approval and use of autoland or HUD to touchdown.

D-ATIS 135.4 282.225	CHICAGO APP CON 119.0 292.125	O'HARE TOWERS 128.15 348.0 (Rwy 9L/27R) 133.0 348.0 (10R/28L)		GND CON (TWR NORTH) 124.125 (TWR SOUTH) 118.05 (ALL TWRs) 226.675	(TWR CENTER) (OBND) 121.75 (IBND) 121.9
--	---	--	--	---	--



1200	4000	CGT				
			FITAR I-VQX 13.9	JAVON I-VQX 20.2	LYSIN I-VQX 26.5	
			PONCC INT I-VQX 4.3	HANSO I-VQX 17.1	KEGNE I-VQX 23.3	
			IM 767	CAKOS I-VQX 10.8	RADAR	
			2200	4000	5000	6000
			274°	7000	8000	9000
			094°	GS 3.00° TCH 55		
			4.7 NM	6.4 NM	3.1 NM	3.1 NM
			3.1 NM	3.1 NM	3.1 NM	3.1 NM
CATEGORY			A	B	C	D
S-ILS 28L			CAT II RA 106/12 100 DA 767			
S-ILS 28L			CAT III RVR 06			

CATEGORY II & III ILS - SPECIAL AIRCREW & AIRCRAFT CERTIFICATION REQUIRED

EC-3, 09 SEP 2021 to 07 OCT 2021

EC-3, 09 SEP 2021 to 07 OCT 2021