

LOC/DME I-UYJ 111.9 Chan 56	APP CRS 273°	Rwy ldg 11245 TDZE 653 Apt Elev 680
--	------------------------	--

ILS or LOC RWY 27C

CHICAGO O'HARE INTL (ORD)

From VOGLR: RNAV 1-GPS required. Aircraft not GPS equipped - RADAR required for procedure entry. DME or RADAR required.

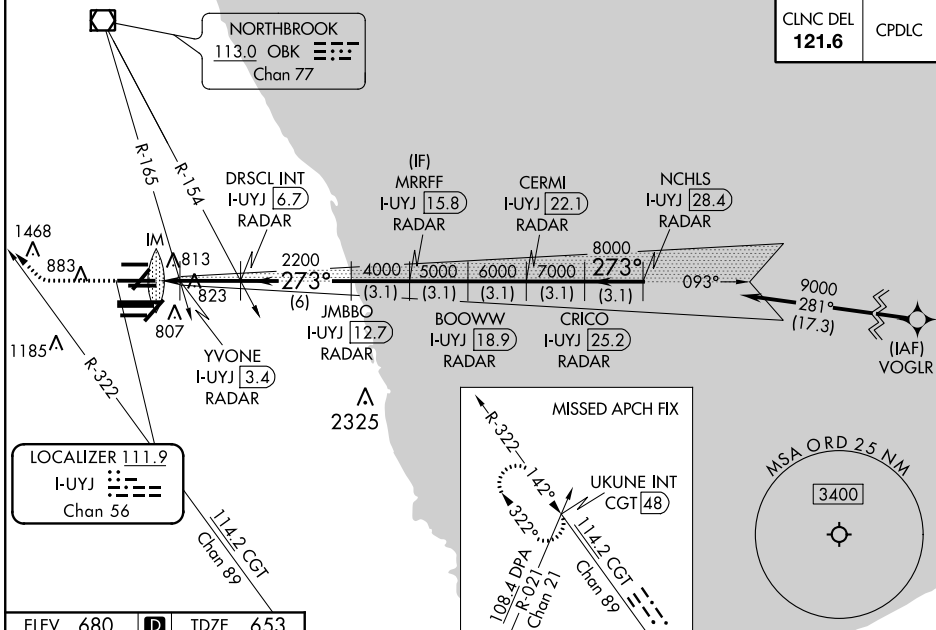
ALSF-2

MISSED APPROACH: Climb to 1100 then climbing right turn to 4000 on heading 290° and CGT R-322 to UKUNE INT/CGT 48 DME and hold.

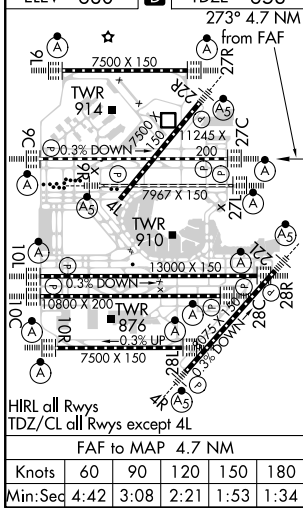
Simultaneous approach authorized. For inop ALS, increase S-LOC 27C Cat C/D visibility to 1½ SM.

D-ATIS 135.4 282.225	CHICAGO APP CON 119.0 292.125	O'HARE TOWERS 128.15 348.0 (Rwy 9L/27R) 133.0 348.0 (10R/28L) 120.75 121.15 126.9 132.7 348.0 (CENTER)	GND CON (TWR CENTER) 124.125 (TWR NORTH) 121.75 (OBND) 118.05 (TWR SOUTH) 121.9 (IBND) 226.675 (ALL TWRs)
--	---	--	---

CLNC DEL 121.6	CPDLC
--------------------------	-------



ELEV 680	TDZE 653
----------	----------



1100	4000	CGT R-322	UKUNE INT	VGSI and ILS glidepath not coincident (VGSI Angle 3.00/TCH 75).	NCHLS I-UYJ 28.4 RADAR
*LOC only.		DRSCL INT I-UYJ 6.7 RADAR	MRRFF I-UYJ 15.8 RADAR	I-UYJ 22.1 RADAR	CRICO I-UYJ 25.2 RADAR
I-UYJ 2		YVONE I-UYJ 3.4 RADAR	JMBBO I-UYJ 12.7 RADAR	BOOWW I-UYJ 18.9 RADAR	9000
IM		2200	4000	5000	6000
1160*2200		273°	8000	GS 3.00° TCH 56	
0.1		1.3	3.3 NM	3.1 NM	3.1 NM

CATEGORY	A	B	C	D
S-ILS 27C	853/18 200 (200-½)			
S-LOC 27C	1160/24	507 (500-½)	1160/55	507 (500-1)
YVONE FIX MINIMUMS (DUAL VOR RECEIVERS or DME REQUIRED)				
S-LOC 27C	1080/24	427 (400-½)	1080/40	427 (400-¾)

EC-3, 09 SEP 2021 to 07 OCT 2021

EC-3, 09 SEP 2021 to 07 OCT 2021