

| | | |
|---|------------------------|--|
| LOC/DME I-OYG 111.9 Chan 56 | APP CRS 093° | Rwy Idg 11245 TDZE 673 Apt Elev 680 |
|---|------------------------|--|

ILS or LOC RWY 9C

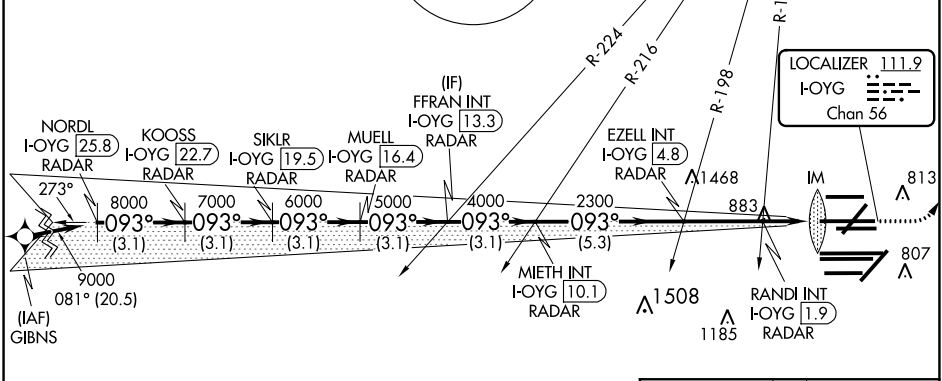
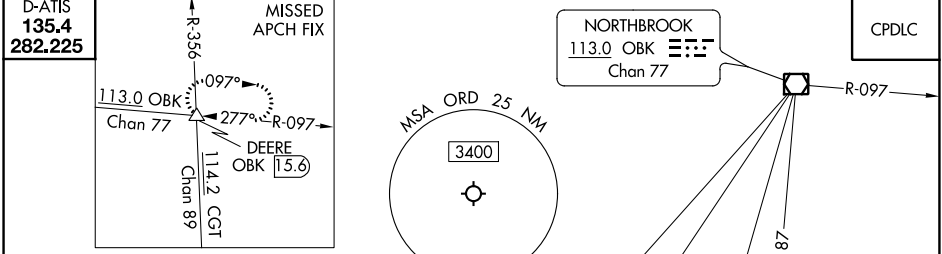
CHICAGO O'HARE INTL (ORD)

DME or RADAR required. From GIBNS: RNAV 1-GPS required. Aircraft not GPS equipped - RADAR required for procedure entry.

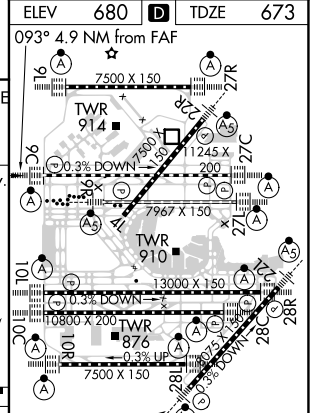
ALSF-2 MISSED APPROACH: Climb to 1200 then climbing left turn to 4000 on heading 037° and OBK VOR/DME R-097 to DEERE INT/OBK 15.6 DME and hold.

Simultaneous approach authorized. For inop ALS, increase S-LOC 9C Cat C/D visibility to 1½ SM.

| | | | | |
|---|---|--|---|--------------------------|
| CHICAGO APP CON 119.0 292.125 | O'HARE TOWERS 128.15 348.0 (Rwy 9L/27R) 133.0 348.0 (110R/28L) 126.9 348.0 (CENTER) | GND CON (TWR NORTH) 124.125 118.05 226.675 (TWR SOUTH) (ALL TWRs) | (TWR CENTER) 121.75 (OBND) 121.9 (IBND) | CLNC DEL 121.6 |
|---|---|--|---|--------------------------|



| | | | | | | | | | |
|--|------------------------|------------------------|------------------------|----------------------------|---------------------------|----------------------------|---------------------------|-----------------|-----------|
| NORDL I-OYG 25.8 RADAR | KOOSS I-OYG 22.7 RADAR | SIKLR I-OYG 19.5 RADAR | MUELL I-OYG 16.4 RADAR | FFRAN INT I-OYG 13.3 RADAR | EZELL INT I-OYG 4.8 RADAR | MIETH INT I-OYG 10.1 RADAR | RANDI INT I-OYG 1.9 RADAR | DEERE I-OYG 1.2 | OBK R-097 |
| 3.1 NM | 3.1 NM | 3.1 NM | 3.1 NM | 3.1 NM | 5.3 NM | 2.9 NM | 0.8 NM | 1.1 NM | 0.1 NM |
| VGS1 and ILS glidepath not coincident (VGS1 Angle 3.00/TCH 72). GS 3.00° TCH 55 *LOC only. | | | | | | | | | |



| | | | | |
|----------|--------------------|-------------|---------|-------------|
| CATEGORY | A | B | C | D |
| S-ILS 9C | 873/18 200 (200-½) | | | |
| S-LOC 9C | 1140/24 | 467 (500-½) | 1140/50 | 467 (500-1) |

| | | | | | |
|---------------------------|------|------|------|------|------|
| HIRL all Rwys | | | | | |
| TDZ/CL all Rwys except 4L | | | | | |
| FAF to MAP 4.9 NM | | | | | |
| Knots | 60 | 90 | 120 | 150 | 180 |
| Min:Sec | 4:54 | 3:16 | 2:27 | 1:58 | 1:38 |

EC-3, 09 SEP 2021 to 07 OCT 2021

EC-3, 09 SEP 2021 to 07 OCT 2021