

| | | |
|--|------------------------|--|
| LOC/DME I-VZE 108.95 Chan 26 (Y) | APP CRS 273° | Rwy ldg 10800 TDZE 651 Apt Elev 680 |
|--|------------------------|--|

(CLOSE PARALLEL)

CHICAGO O'HARE INTL (ORD)

Aircraft not GPS equipped - RADAR required for procedure entry. DME or RADAR required. From VOGLR: RNAV 1-GPS required.

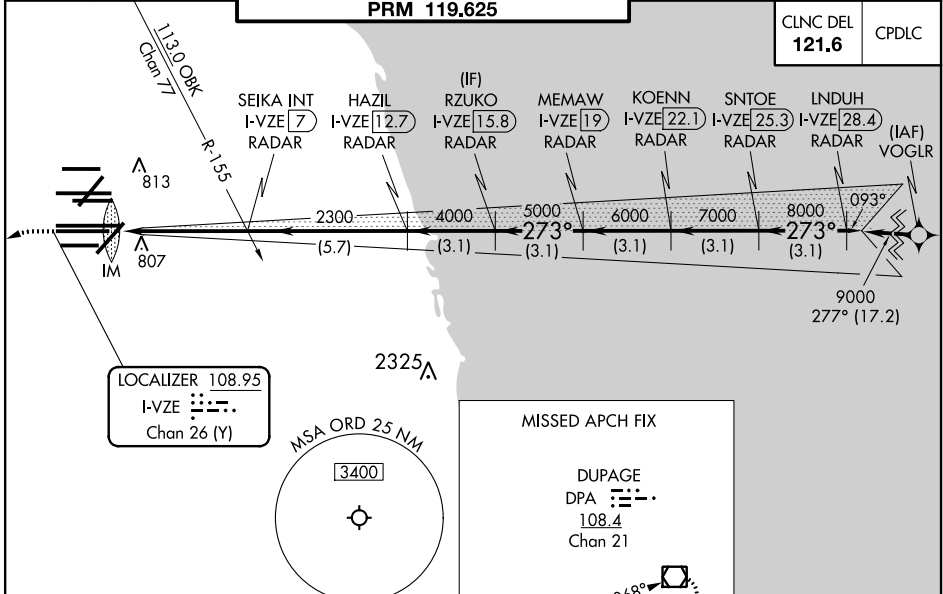
ALSF-2

MISSED APPROACH: Climb to 1100 then climbing left turn to 4000 on heading 215° and DPA VOR/DME R-082 to DPA VOR/DME and hold.

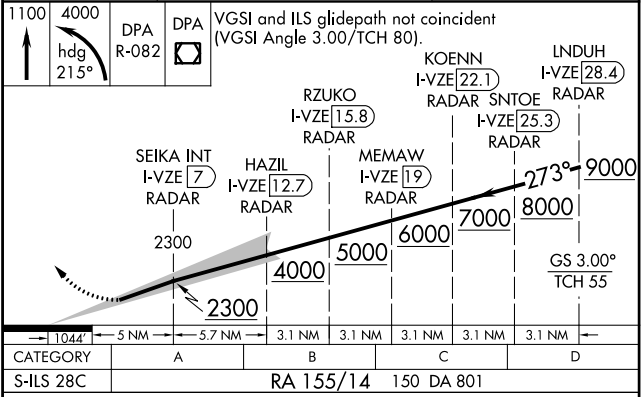
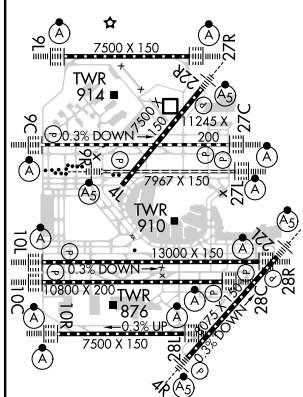
Simultaneous approach authorized. Use of FD or AP required during simultaneous operations. Dual VHF comm required. See additional requirements on AAUP. Requires specific OPSPEC, MSPEC, or LOA approval and use of HUD to DH.

| | | | |
|--|---|---|---|
| D-ATIS 135.4 282.225 | CHICAGO APP CON 119.0 292.125 | O'HARE TOWERS 128.15 348.0 (Rwy 9L/27R) 133.0 348.0 (10R/28L) 120.75 121.15 126.9 132.7 348.0 (CENTER) PRM 119.625 | GND CON (TWR CENTER) 121.75 (OBND) (TWR NORTH) 121.95 (IBND) (TWR SOUTH) 121.9 (IBND) 226.675 (ALL TWRs) |
|--|---|---|---|

| | |
|--------------------------|-------|
| CNLC DEL 121.6 | CPDLC |
|--------------------------|-------|



| | | |
|-----------------|----------|-----------------|
| ELEV 680 | D | TDZE 651 |
|-----------------|----------|-----------------|



SA CATEGORY I ILS - SPECIAL AIRCREW & AIRCRAFT CERTIFICATION REQUIRED

EC-3, 09 SEP 2021 to 07 OCT 2021

EC-3, 09 SEP 2021 to 07 OCT 2021