

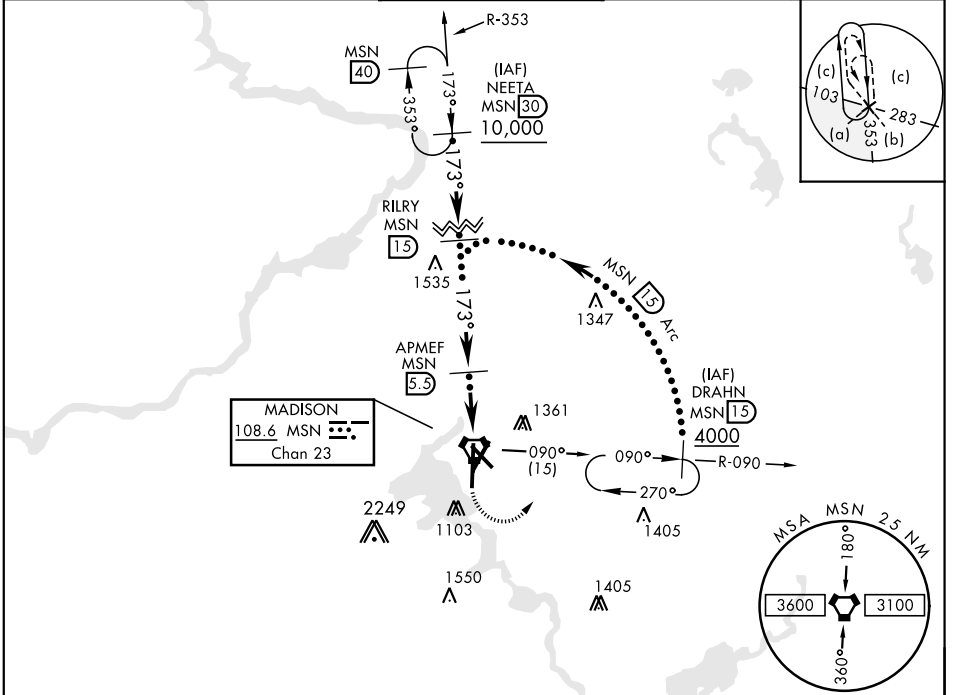
MADISON, WISCONSIN

HI-TACAN RWY 18

VORTAC MSN 108.6 Chan 23	APCH CRS 173°	Rwy ldg TDZE 859 Arprt Elev 887	JAL-245 [USAF] MADISON/ DANE COUNTY REGIONAL-TRUAX FIELD (KMSN)
--	-------------------------	---	--

MALS A5	MISSED APPROACH: Climbing left turn to 4000 on MSN VORTAC R-090 to DRAHN 15 DME and hold.
-------------------	---

ATIS 124.65 278.3	MADISON APP CON EAST 120.1 350.3 WEST 135.45 343.7	MADISON TOWER ★ 119.3 0 (CTAF) 257.8	GND CON 121.9 348.6	ASR
-----------------------------	--	---	-------------------------------	-----

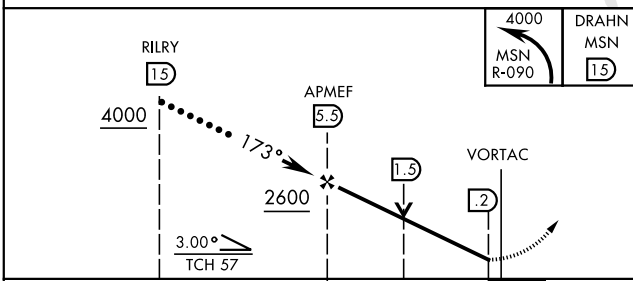


EC-3, 09 SEP 2021 to 07 OCT 2021

EC-3, 09 SEP 2021 to 07 OCT 2021

RADAR REQUIRED

EMERG SAFE ALT 100 NM 3600



ELEV 887	TDZE 859
-----------------	-----------------

The detailed runway diagram for RWY 18 shows the runway layout, including taxiway A (951 ft), taxiway B (924 ft), and taxiway C (916 ft). The runway is 7200 ft x 120 ft wide. It also shows the location of the tower (TWR 964) and various navigation aids like MALSR A5 and P.

Rwy 3 ldg 6770'
Rwy 14 ldg 5369'
Rwy 18 ldg 8606'
Rwy 36 ldg 8017'

HIRL all Rwy 0
REIL Rwy 3, 14 and 32 0

HI-TACAN RWY 18