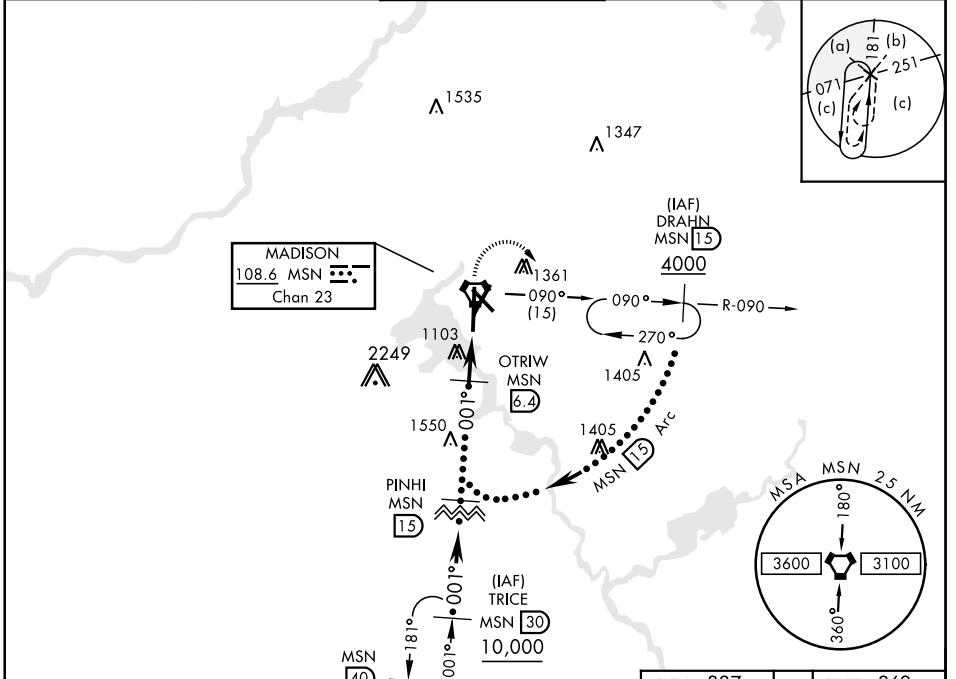


# HI-TACAN RWY 36

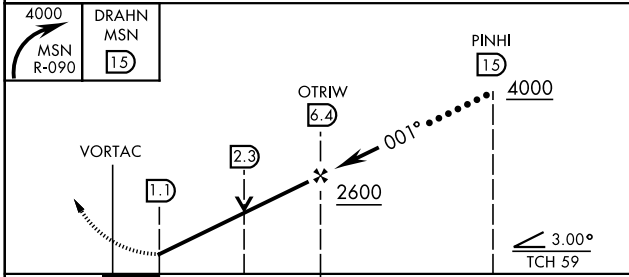
VORTAC MSN <b>108.6</b> Chan <b>23</b>	APCH CRS <b>001°</b>	Rwy ldg TDZE <b>862</b> Arprt Elev <b>887</b>	JAL-245 [USAF] MADISON/ DANE COUNTY REGIONAL-TRUAX FIELD (KMSN)
--	-------------------------	---	--

<b>M</b>	MALSRL 	MISSED APPROACH: Climbing right turn to 4000 on MSN VORTAC R-090 to DRAHN 15 DME and hold.
----------	------------	--

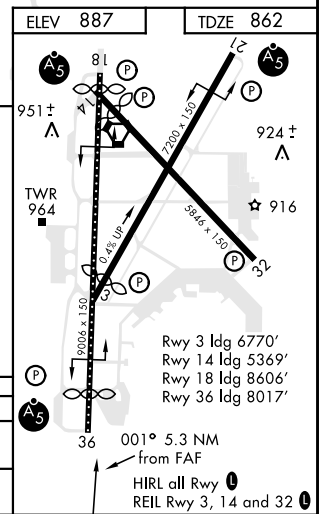
ATIS <b>124.65 278.3</b>	MADISON APP CON EAST <b>120.1 350.3</b> WEST <b>135.45 343.7</b>	MADISON TOWER ★ <b>119.3 0</b> (CTAF) <b>257.8</b>	GND CON <b>121.9 348.6</b>	ASR
-----------------------------	--	---	-------------------------------	-----



**RADAR REQUIRED**  
EMERG SAFE ALT 100 NM 3600



CATEGORY	C	D	E
S-36	1320/40 458 (500-¾)	1320/50 458 (500-1)	1700-3 813 (900-3)
CIRCLING	1460-1½ 573 (600-1½)	1700-2¾ 813 (900-2¾)	1700-3 813 (900-3)



# HI-TACAN RWY 36

EC-3, 09 SEP 2021 to 07 OCT 2021

EC-3, 09 SEP 2021 to 07 OCT 2021