

LOC/DME I-DSZ 110.1 Chan 38	APP CRS 185°	Rwy Idg TDZE 864 Apt Elev 887
---	------------------------	---

ILS RWY 18 (SA CAT I & II)
DANE COUNTY RGNL-TRUAX FLD (MSN)

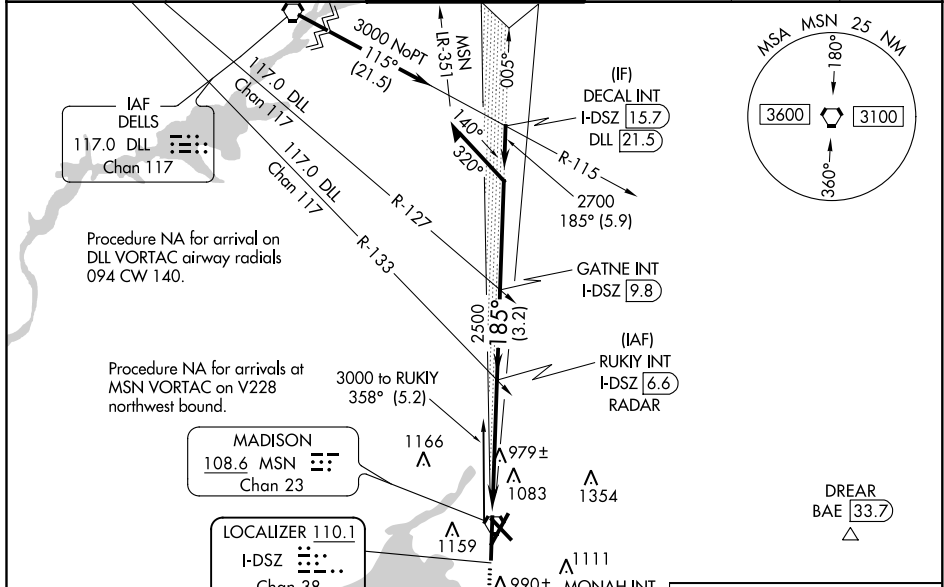
DME required.

Procedure NA when tower closed.
SA CAT I: Requires specific OPSPEC, MSPEC, or LOA approval and use of HUD to DH.
SA CAT II: Reduced lighting: Requires specific OPSPEC MSPEC, or LOA approval and use of autoland or HUD to touchdown.

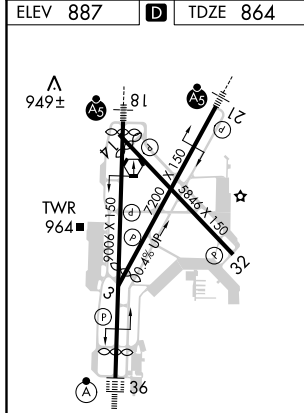
MALSRL
A5

MISSED APPROACH: Climb to 2700 on MSN VORTAC R-180 to MONAH INT/MSN VORTAC 4.9 DME/RADAR and hold.

ATIS 124.65 278.3	MADISON APP CON ★ 135.45 343.7	MADISON TOWER ★ 119.3 (CTAF) 0 257.8	GND CON 121.9 348.6	CLNC DEL 121.625	UNICOM 122.95
-----------------------------	--	--	-------------------------------	----------------------------	-------------------------



ELEV 887	D	TDZE 864
----------	----------	----------



2700

MSN R-180

MONAH INT

RUKIY INT
I-DSZ [6.6]
RADAR

Remain within 10 NM

005°

2500

GATNE
I-DSZ [9.8]

2800

2700

2500

GS 3.00°
TCH 57

	A	B	C	D
S-ILS 18	SA CAT I	RA 153/14	150 DA 1014	
S-ILS 18	SA CAT II	RA 103/12	100 DA 964	

**SA CATEGORY I & II ILS SPECIAL AIRCREW
& AIRCRAFT CERTIFICATION REQUIRED**

HIRL all Rwys
REIL Rwys 3 and 32
REIL Rwy 14