

WAAS CH 42829 W21A	APP CRS 212°	Rwy Idg TDZE 887 Apt Elev 887	7015
--	------------------------	---	-------------

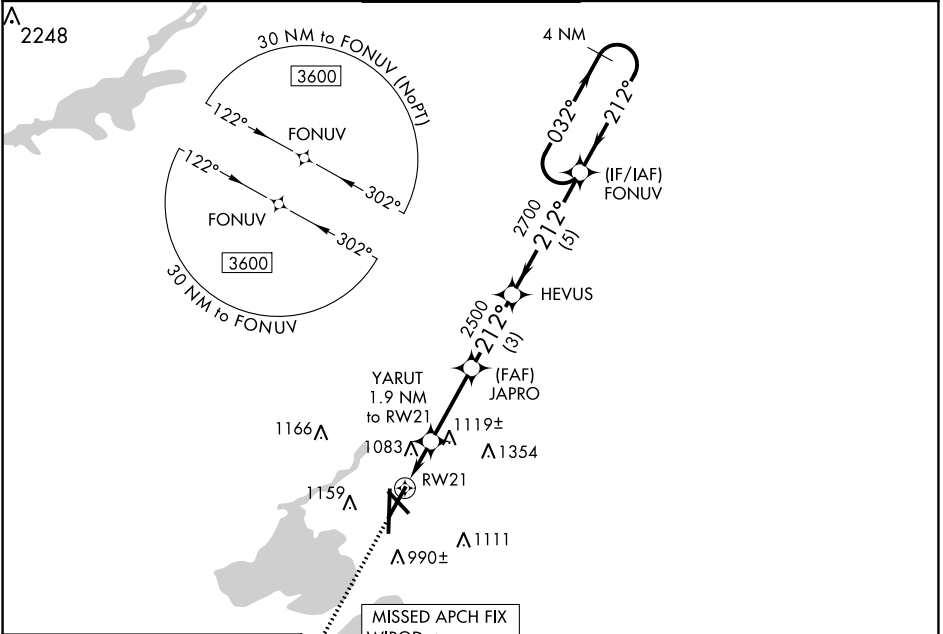
RNAV (GPS) RWY 21
DANE COUNTY RGNL-TRUAX FLD (MSN)

⚠ For uncompensated Baro-VNAV systems, LNAV/VNAV NA below -20°C (-4°F) or above 54°C (130°F). DME/DME RNP-0.3 NA. For inop MALS, increase LNAV/VNAV all Cats visibility to 1 3/4 mile and LNAV Cat C/D visibility to 1 1/2 mile.

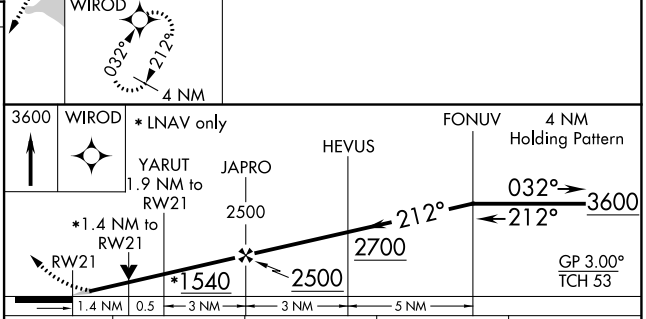
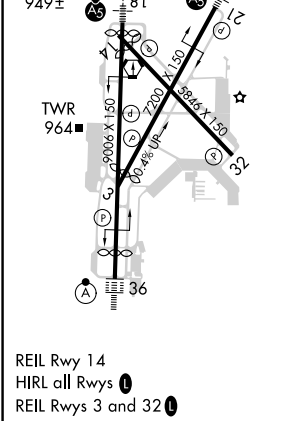


MISSED APPROACH:
Climb to 3600 direct
WIROD and hold.

ATIS 124.65 278.3	MADISON APP CON * 135.45 343.7	MADISON TOWER * 119.3 (CTAF) 0 257.8	GND CON 121.9 348.6	CLNC DEL 121.625	UNICOM 122.95
-----------------------------	--	--	-------------------------------	----------------------------	-------------------------



ELEV 887	D TDZE 887
----------	-------------------



3600	WIROD	* LNAV only	FONUV 4 NM	
↑	⬠	YARUT 1.9 NM to RW21	HEVUS	
		* 1.4 NM to RW21	JAPRO 2500	
		1.4 NM	2500	
		0.5	2700	
		3 NM	212°	
		5 NM	032°	
			3600	
			GP 3.00° TCH 53	
CATEGORY	A	B	C	D
LPV DA	1087-1/2		200 (200-1/2)	
LNAV/VNAV DA	1412-1 3/8		525 (600-1 1/8)	
LNAV MDA	1380-1/2		1380-1 493 (500-1)	
C CIRCLING	1420-1 533 (600-1)	1460-1 573 (600-1)	1460-1 1/2 573 (600-1 1/2)	1700-2 3/4 813 (900-2 3/4)

EC-3, 09 SEP 2021 to 07 OCT 2021

EC-3, 09 SEP 2021 to 07 OCT 2021