


WAAS CH 77603 W09A	APP CRS 089°	Rwy Idg 8175 TDZE 857 Apt Elev 869
--	------------------------	---

RNAV (GPS) RWY 9

THE EASTERN IOWA (CID)

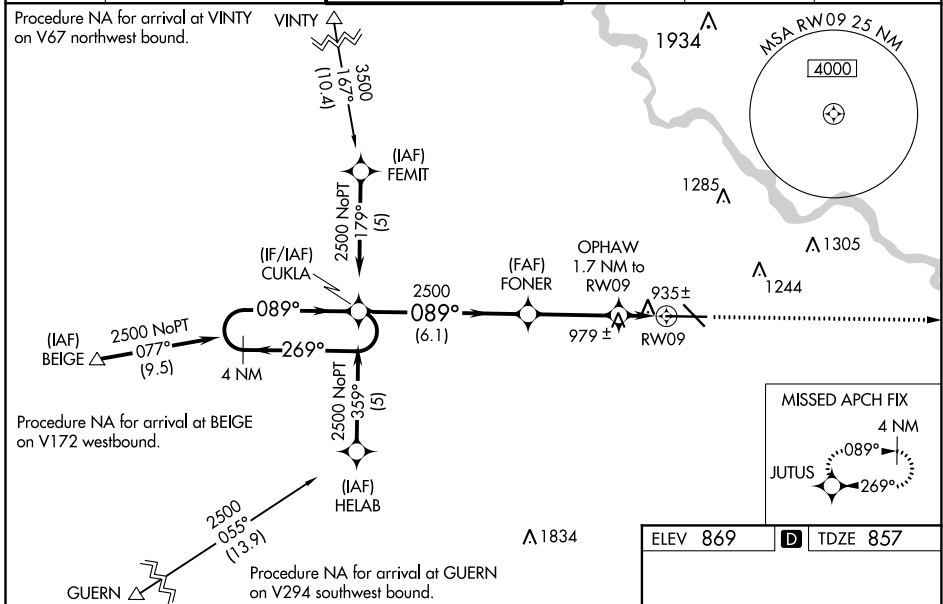
⚠ Baro-VNAV NA when using Iowa City altimeter setting. For uncompensated Baro-VNAV systems, LNAV/VNAV NA below -1.6°C (4°F) or above 47°C (116°F). DME/DME RNP-0.3 NA. When local altimeter setting not received, use Iowa City altimeter setting and increase all DA 64 feet and all MDA 80 feet; increase LNAV/VNAV all Cats visibility to RVR 5000 and LNAV Cat C to RVR 4000. For inoperative MALSRL increase LNAV Cat D visibility to RVR 6000. VDP NA with Iowa City altimeter setting. When using Iowa City altimeter setting; for inoperative MALSRL, increase LPV all Cats visibility to RVR 5000, LNAV Cat C visibility to RVR 6000 and LNAV Cat D visibility to 1 1/2 miles.
#RVR 1800 authorized with use of FD or AP or HUD to DA, NA when using Iowa City altimeter setting.

MALSRL



MISSED APPROACH:
Climb to 2700 direct JUTUS and hold.

ATIS 124.15	CEDAR RAPIDS APP CON * 119.7 266.8	CEDAR RAPIDS TOWER * 118.7 (CTAF) 0 266.8	GND CON 121.6	CLNC DEL 125.45	UNICOM 122.95
-----------------------	--	---	-------------------------	---------------------------	-------------------------



Procedure NA for arrival at VINTY on V67 northwest bound.

Procedure NA for arrival at BEIGE on V172 westbound.

Procedure NA for arrival at GUERN on V294 southwest bound.

VGSI and RNAV glidepath not coincident (VGSI Angle 3.00/TCH 60).

4 NM Holding Pattern

2500 ← 269° → 089° → 2500

GP 3.00° TCH 49

6.1 NM | 3.3 NM | 0.7 NM | 1 NM

2700 JUTUS

*LNAV only

CATEGORY	A	B	C	D
LPV DA#		1057/24	200 (200-1/2)	
LNAV/VNAV DA		1204/40	347 (400-3/4)	
LNAV MDA	1280/24	1320/24	383 (400-1/2)	1240/50 383(400-1)
CIRCLING	1280-1 411 (500-1)	1320-1 451 (500-1)	1320-1 1/2 451 (500-1 1/2)	1420-2 551 (600-2)

MISSED APCH FIX

ELEV 869 **TDZE 857**

MIRL Rwy 13-31
HIRL Rwy 9-27
REIL Rwy 13

NC-3, 09 SEP 2021 to 07 OCT 2021

NC-3, 09 SEP 2021 to 07 OCT 2021