

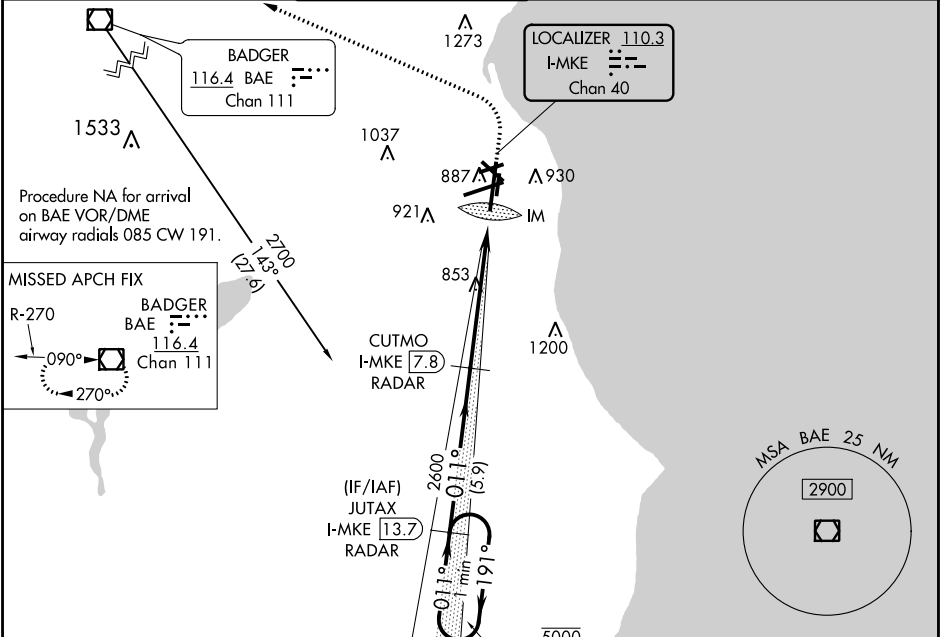
LOC/DME I-MKE 110.3 Chan 40	APP CRS 011°	Rwy 1L ldg 9080 TDZE 704 Apt Elev 729
--	------------------------	--

ILS RWY 1L (CAT II & III)

GENERAL MITCHELL INTL (MKE)

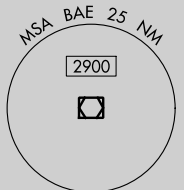
DME or RADAR required for procedure entry.		ALSF-2 	MISSED APPROACH: Climb to 2000 then climbing left turn to 2900 direct BAE VOR/DME and hold.		
--	--	------------	---	--	--

D-ATIS 126.4	MILWAUKEE APP CON 126.5 307.0	MILWAUKEE TOWER 124.575 269.05	GND CON 121.8 263.125	CLNC DEL 120.8	CPDLC
------------------------	---	--	---------------------------------	--------------------------	-------

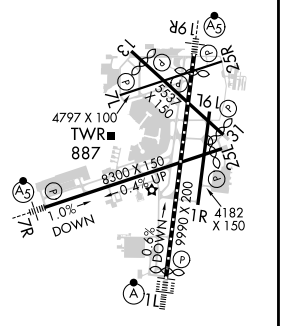
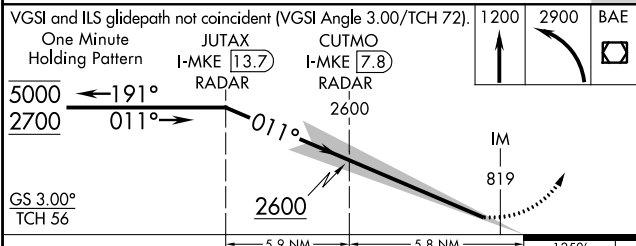


EC-3, 09 SEP 2021 to 07 OCT 2021

EC-3, 09 SEP 2021 to 07 OCT 2021



ELEV 729	D TDZE 704
TDZ/CL Rwy 1L REIL Rwy 1R, 7L, 13, 25L, 25R and 31	



CATEGORY	A	B	C	D
S-ILS 1L	CAT II RA 98/12 100 DA 804			
S-ILS 1L	CAT III RVR 06			

CATEGORY II & III ILS - SPECIAL AIRCREW & AIRCRAFT CERTIFICATION REQUIRED

HIRL Rwy 1L-19R and 7R-25L
MIRL Rwy 1R-19L, 13-31, and 7L-25R