

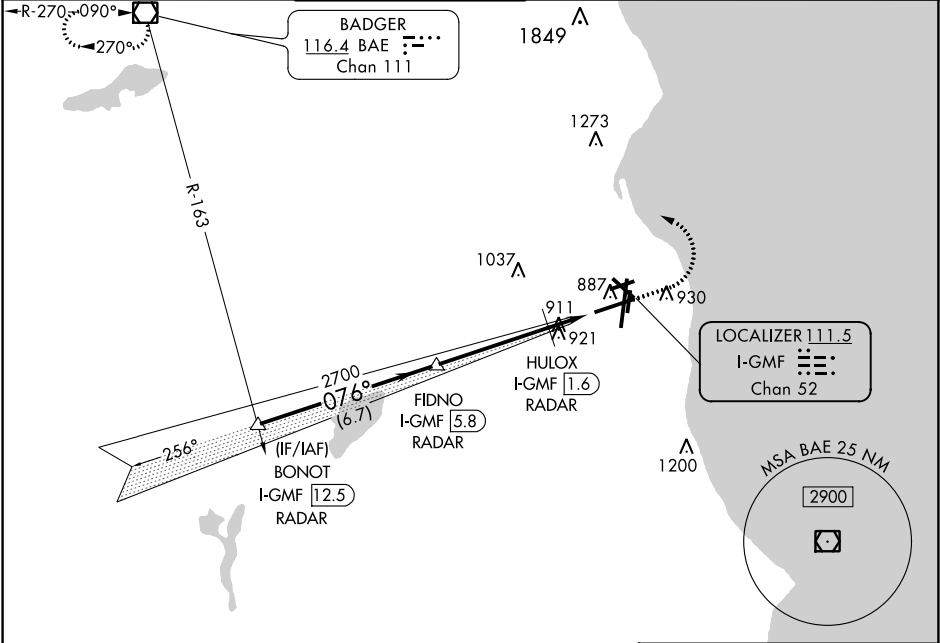
LOC/DME I-GMF 111.5 Chan 52	APP CRS 076°	Rwy Idg 8012 TDZE 729 Apt Elev 729
---	------------------------	---

ILS or LOC RWY 7R

GENERAL MITCHELL INTL (MKE)

RADAR required for procedure entry. DME or RADAR required.		MALSR 	MISSED APPROACH: Climb to 2900 then left turn direct BAE VOR/DME and hold.		
# RVR 1800 authorized with use of FD or AP or HUD to DA.					

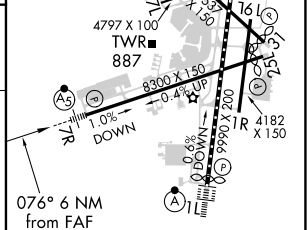
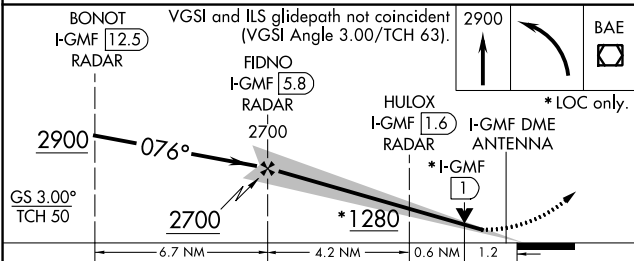
D-ATIS 126.4	MILWAUKEE APP CON 126.5 307.0	MILWAUKEE TOWER 124.575 269.05	GND CON 121.8 263.125	CLNC DEL 120.8	CPDLC
------------------------	---	--	---------------------------------	--------------------------	-------



EC-3, 09 SEP 2021 to 07 OCT 2021

EC-3, 09 SEP 2021 to 07 OCT 2021

ELEV 729	D TDZE 729
----------	-------------------



CATEGORY	A	B	C	D
S-ILS 7R #	929/24 200 (200-½)			
S-LOC 7R	1180/24	451 (500-½)	1180/45	451 (500-¾)
C CIRCLING	1240-1	511 (600-1)	1240-1½ 511 (600-½)	1360-2 631 (700-2)

TDZ/CL Rwy 1L REIL Rwys 1R, 7L, 13, 25L, 25R and 31 HIRL Rwys 1L-19R and 7R-25L MIRL Rwys 1R-19L, 13-31, and 7L-25R FAF to MAP 6 NM					
Knots	60	90	120	150	180
Min:Seq	6:00	4:00	3:00	2:24	2:00