

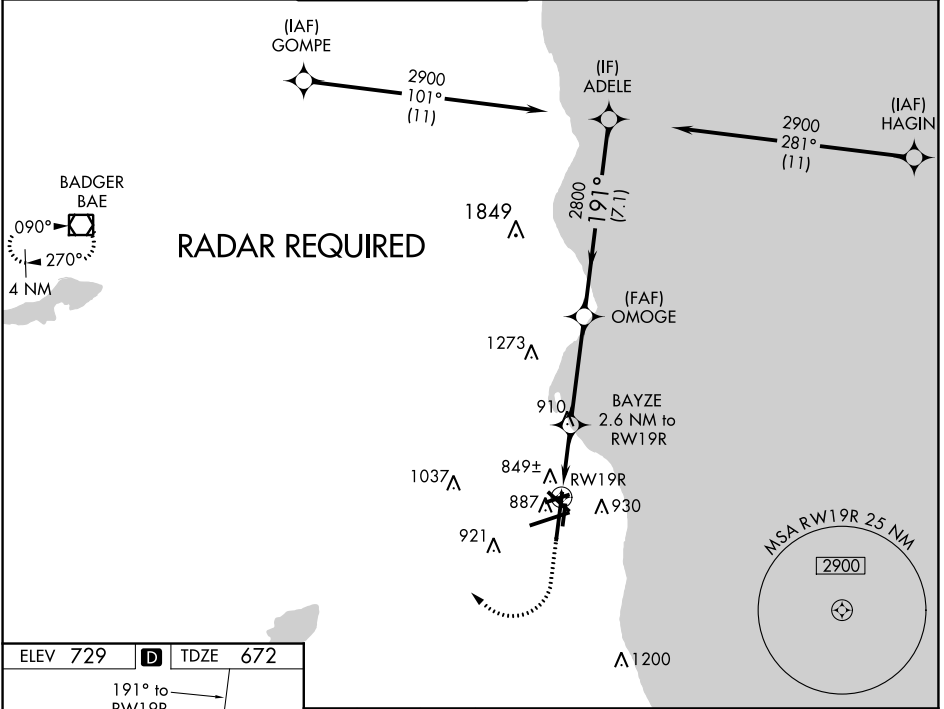
WAAS CH <b>99322</b> <b>W19A</b>	APP CRS <b>191°</b>	Rwy Idg TDZE Apt Elev	<b>9205</b> <b>672</b> <b>729</b>
--	------------------------	-----------------------------	---

# RNAV (GPS) RWY 19R

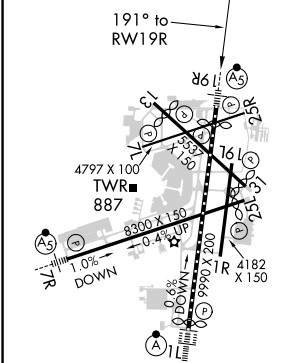
GENERAL MITCHELL INTL (MKE)

<p>▼ For uncompensated Baro-VNAV systems, LNAV/VNAV NA below -22°C (-7°F) or above 39°C (102°F). DME/DME RNP-0.3 NA. For inop MALSR, increase LNAV/VNAV all Cats visibility to 1½ mile. ** RVR 1800 authorized with use of FD or AP or HUD to DA.</p>	<p>MALSR </p>	<p>MISSED APPROACH: Climb to 2000 then climbing right turn to 2800 direct BAE VOR/DME and hold.</p>
---	-------------------	---

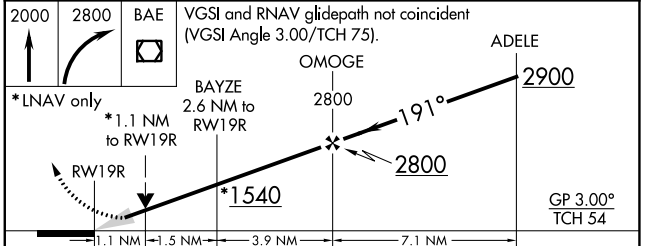
D-ATIS <b>126.4</b>	MILWAUKEE APP CON <b>126.5 307.0</b>	MILWAUKEE TOWER <b>124.575 269.05</b>	GND CON <b>121.8 263.125</b>	CLNC DEL <b>120.8</b>	CPDLC
------------------------	---	--	---------------------------------	--------------------------	-------



ELEV 729	<b>D</b>	TDZE 672
----------	----------	----------



TDZ/CL Rwy 1L  
REIL Rws 1R, 7L,  
13, 25R, 25L and 31  
HIRL Rws 1L-19R and 7R-25L  
MIRL Rws 1R-19L, 13-31, and 7L-25R



CATEGORY	A	B	C	D
LPV DA **	872/24 200 (200-½)			
LNAV/ VNAV DA	1031/40 359 (400-¾)			
LNAV MDA	1100/24 428 (400-½)	1100/40 428 (400-¾)		
CIRCLING	1240-1 511 (600-1)	1240-1½ 511 (600-1½)	1360-2 631 (700-2)	

EC-3, 09 SEP 2021 to 07 OCT 2021

EC-3, 09 SEP 2021 to 07 OCT 2021