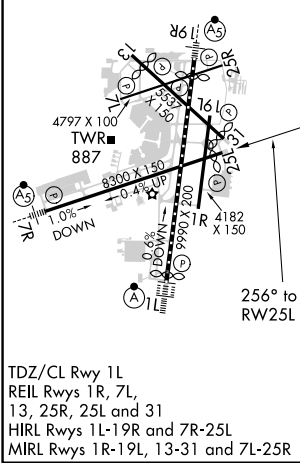
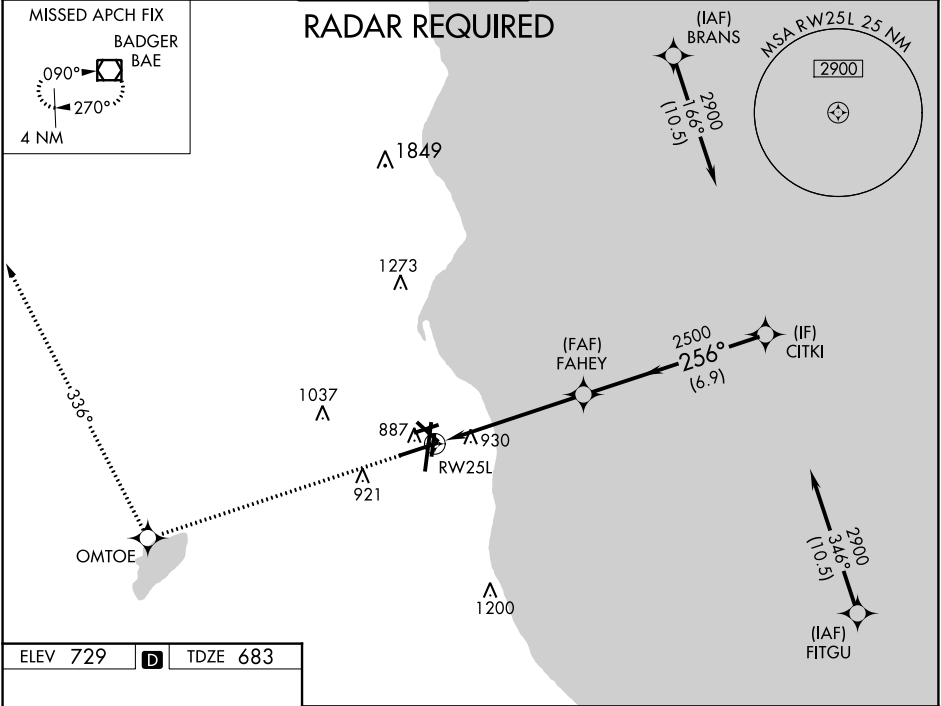


WAAS CH 62826 W25A	APP CRS 256°	Rwy Idg TDZE Apt Elev	7867 683 729
--	------------------------	-----------------------------	---

RNAV (GPS) Z RWY 25L

GENERAL MITCHELL INTL (MKE)

<p>▼ For uncompensated Baro-VNAV systems, LNAV/VNAV NA below -20°C (-4°F) or above 54°C (130°F). DME/DME RNP-0.3 NA. Helicopter visibility reduction below 3/4 SM NA.</p>		<p>MISSED APPROACH: Climb to 2900 direct OMTOE and on track 336° to BAE VOR/DME and hold.</p>			
D-ATIS 126.4	MILWAUKEE APP CON 126.5 307.0	MILWAUKEE TOWER 124.575 269.05	GND CON 121.8 263.125	CLNC DEL 120.8	CPDLC



ELEV 729	D	TDZE 683				
2900	OMTOE	tr 336°	BAE	* LNAV only		
				FAHEY	CITKI	
				2500	2900	
				256°		
				2500		GP 3.00° TCH 47
				1.5	4.1 NM	6.9 NM
CATEGORY	A	B	C	D		
LPV DA		973-1	290 (300-1)			
LNAV/VNAV DA		1262-2	579 (600-2)			
LNAV MDA	1180-1	497 (500-1)	1180-1 3/8	497 (500-1 3/8)		
C CIRCLING	1240-1	511 (600-1)	1240-1 1/2	511 (600-1 1/2)	1360-2	631 (700-2)