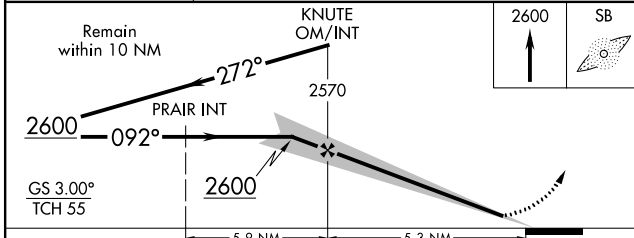
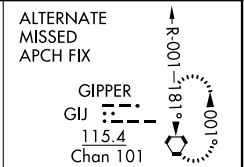
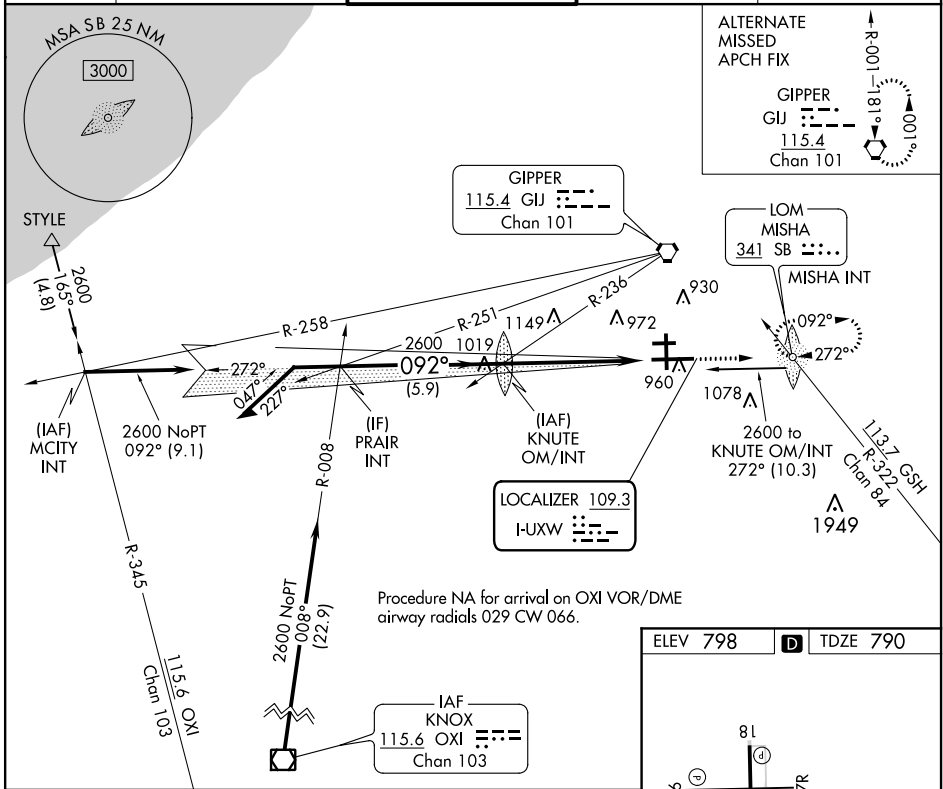


LOC I-UXW 109.3	APP CRS 092°	Rwy Idg 8412 TDZE 790 Apt Elev 798
---------------------------	------------------------	---

ILS or LOC RWY 9R

SOUTH BEND INTL (SBN)

ADF required.		MALSF	MISSED APPROACH: Climb to 2600 direct MISHA LOM/INT and hold.	
▼ Rwy 9R helicopter visibility reduction below 3/4 SM NA. ▲ Inop table does not apply to S-ILS 9R all Cats. For inop ALS, increase S-LOC 9R Cats C/D visibility to RVR 6000.				
ATIS 120.675	SOUTH BEND APP CON* 118.55 257.8	SOUTH BEND TOWER* 135.675 (CTAF) 257.8	GND CON 121.7	CLNC DEL 121.9



ELEV 798	TDZE 790
----------	----------

HIRL Rwy 9R-27L
MIRL Rwy 18-36
MIRL Rwy 9L-27R

FAF to MAP 5.3 NM

Knots	60	90	120	150	180
Min:Sec	5:18	3:32	2:39	2:07	1:46

EC-2, 09 SEP 2021 to 07 OCT 2021

EC-2, 09 SEP 2021 to 07 OCT 2021