

WAAS CH <b>70542</b> <b>W09A</b>	APP CRS <b>092°</b>	Rwy Idg TDZE Apt Elev	<b>4300</b> <b>788</b> <b>798</b>
--	------------------------	-----------------------------	---

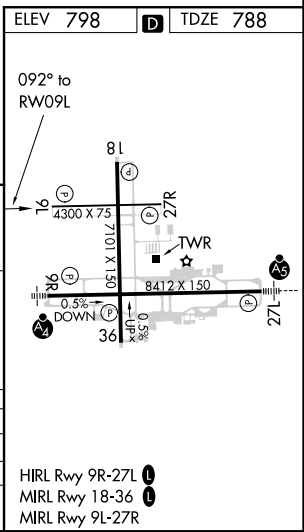
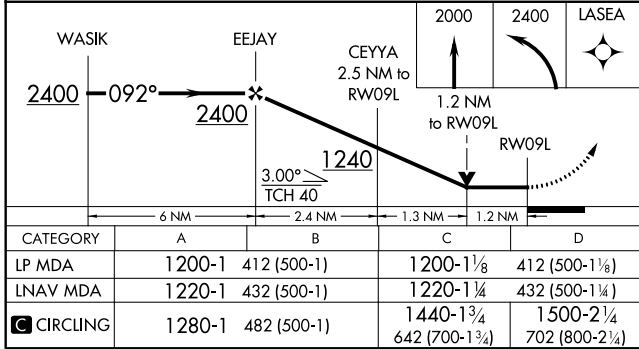
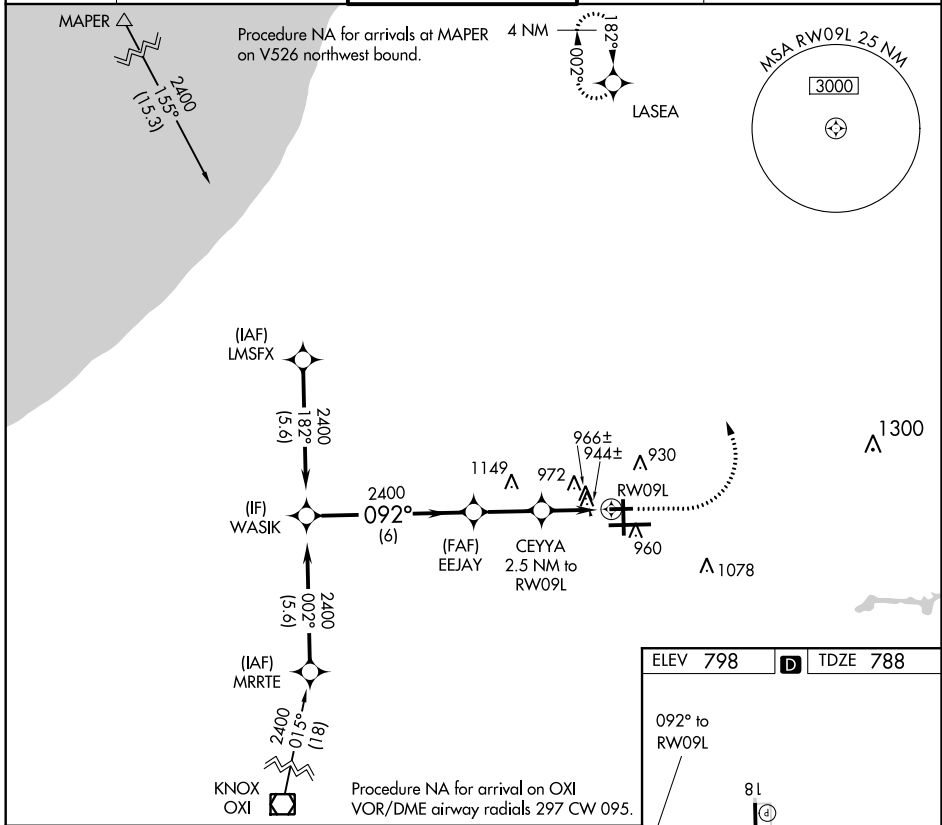
# RNAV (GPS) RWY 9L

SOUTH BEND INTL (SBN)

RNP APCH. MISSED APPROACH: Climb to 2000 then climbing left turn to 2400 direct LASEA and hold.

▼ Rwy 9L helicopter visibility reduction below 3/4 SM NA.

ATIS <b>120.675</b>	SOUTH BEND APP CON* <b>118.55 257.8</b>	SOUTH BEND TOWER* <b>135.675 (CTAF) 257.8</b>	GND CON <b>121.7</b>	CLNC DEL <b>121.9</b>
------------------------	--	--	-------------------------	--------------------------



EC-2, 09 SEP 2021 to 07 OCT 2021

EC-2, 09 SEP 2021 to 07 OCT 2021