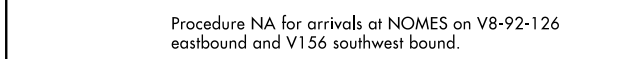
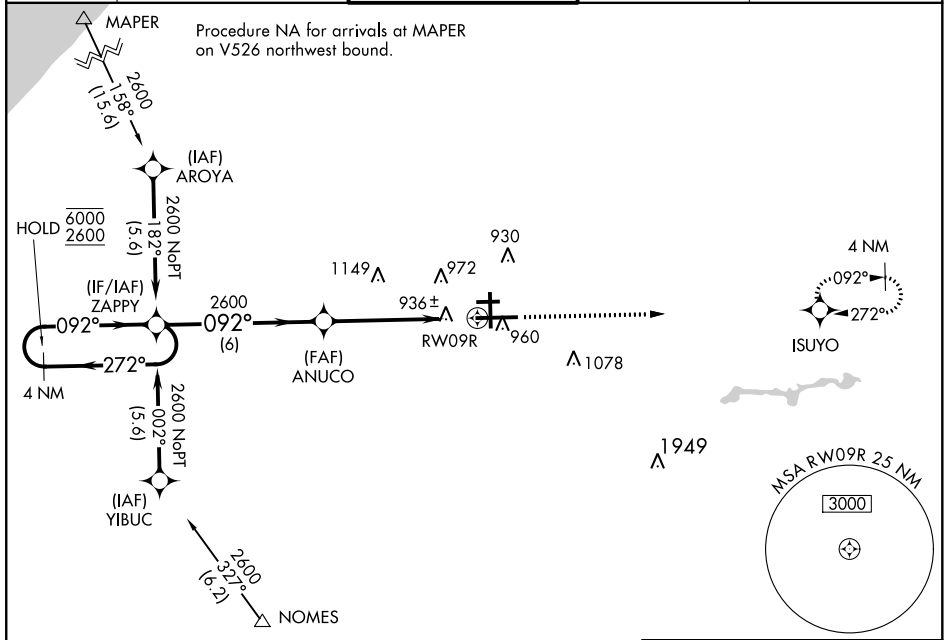


WAAS CH <b>6090B</b> <b>W09B</b>	APP CRS <b>092°</b>	Rwy Idg <b>8412</b> TDZE <b>790</b> Apt Elev <b>798</b>
--	------------------------	---

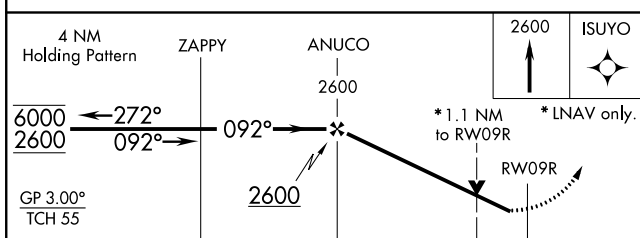
# RNAV (GPS) RWY 9R

SOUTH BEND INTL (SBN)

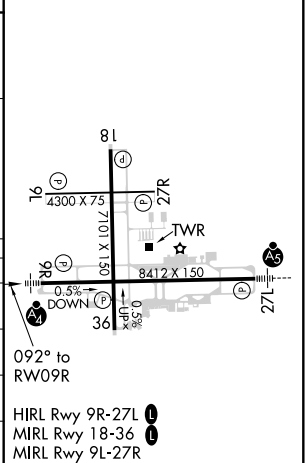
RNP APCH.		MALSF	MISSED APPROACH: Climb to 2600 direct ISUYO and hold.
ATIS <b>120.675</b>	SOUTH BEND APP CON * <b>118.55 257.8</b>	SOUTH BEND TOWER * <b>135.675</b> (CTAF) <b>257.8</b>	GND CON <b>121.7</b>
			CLNC DEL <b>121.9</b>



ELEV 798	<b>D</b> TDZE 790
----------	-------------------



CATEGORY	A	B	C	D
LPV DA		990/40	200 (200-3/4)	
LNAV/VNAV DA		1222/40	432 (500-3/4)	
LNAV MDA		1200/40	410 (500-3/4)	
<b>C</b> CIRCLING	1280-1 482 (500-1)		1440-1 3/4 642 (700-1 3/4)	1500-2 1/4 702 (800-2 1/4)



EC-2, 09 SEP 2021 to 07 OCT 2021

EC-2, 09 SEP 2021 to 07 OCT 2021