

PEORIA, ILLINOIS

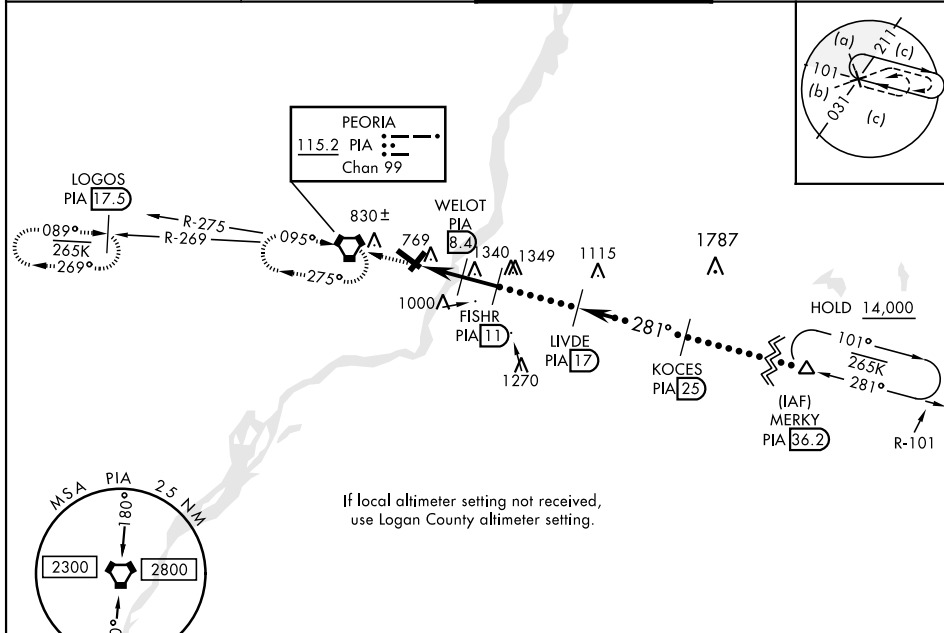
HI-VOR or TACAN RWY 31

VORTAC PIA 115.2 Chan 99	APCH CRS 281°	Rwy Idg 10,104 TDZE Arpt Elev 661
--	-------------------------	---

AL-597 [USAF] GENERAL DOWNING - PEORIA INTL (KPIA)

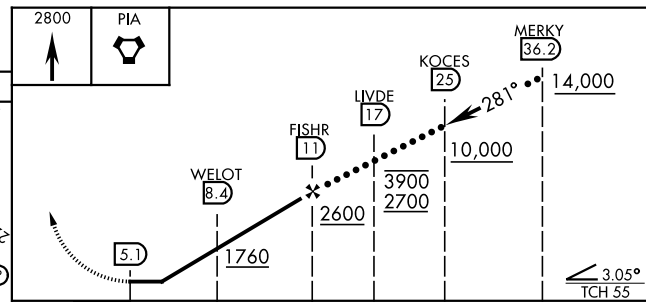
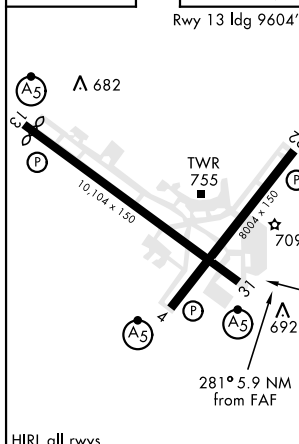
DME required.	MALSR 	MISSED APPROACH: Climb to 2800, direct PIA VORTAC and hold. Continue climb-in-hold to 2800. (TACAN aircraft: continue on PIA R-269 to LOGOS/PIA 17.5 DME and hold west, right turn 089° inbound).
---------------	-----------	---

ATIS 126.1 282.2	PEORIA APP CON 125.8 269.2 (305°-125°) 124.675 317.55 (126°-304°)	PEORIA TOWER 124.0 353.85	GND CON 121.85 348.6
----------------------------	---	-------------------------------------	--------------------------------



If local altimeter setting not received, use Logan County altimeter setting.

EMERG SAFE ALT 100 NM 3300	ELEV 661	TDZE 650
Rwy 13 Idg 9604'		



CATEGORY	C	D	E
S-31*	1040/60	390 (400-1½)	
CIRCLING*	1180-1¾ 519 (600-1¾)	1400-2¾ 739 (800-2¾)	1680-3 1019 (1100-3)
LOGAN COUNTY ALTIMETER MINIMA			
S-31*	1140-1¾	490 (500-1¾)	
CIRCLING*	1280-1¾ 619 (700-1¾)	1500-2¾ 839 (900-2¾)	1780-3 1119 (1200-3)

PEORIA, ILLINOIS

40°40'N-89°42'W

GENERAL DOWNING - PEORIA INTL (KPIA)

Amdt 1B 17JUN21

HI-VOR or TACAN RWY 31

EC-3, 09 SEP 2021 to 07 OCT 2021

EC-3, 09 SEP 2021 to 07 OCT 2021