

LOC/DME I-RNX <b>110.55</b> Chan 42 (Y)	APP CRS <b>041°</b>	Rwy Idg <b>7826</b> TDZE <b>652</b> Apt Elev <b>661</b>
---	------------------------	---

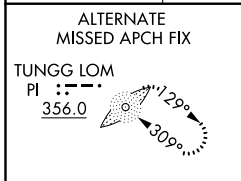
**ILS RWY 4** (SA CAT I & II)  
GENERAL DOWNING-PEORIA INTL(PIA)

**⚠** SA CAT I: Requires specific OPSPEC, MSPEC, or LOA approval and use of HUD to DH. SA CAT II: Reduced Lighting: Requires specific OPSEPC, MSPEC, or LOA approval and use of Autoland or HUD to touchdown.

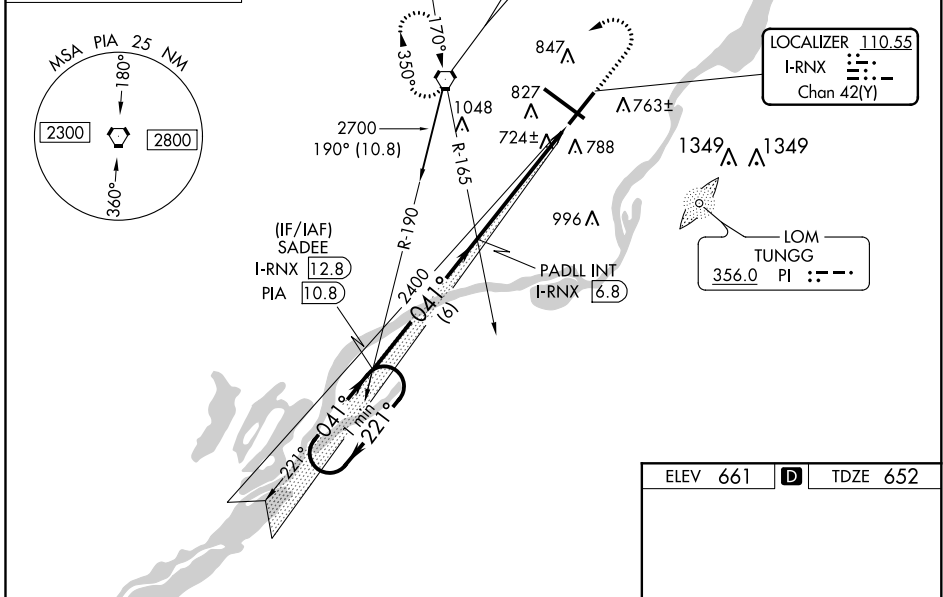


**MISSED APPROACH:** Climb to 1500 then climbing left turn to 2700 direct PIA VORTAC and hold.

ATIS <b>126.1 282.2</b>	PEORIA APP CON <b>125.8 269.2</b> (305°-125°)	<b>124.675 317.55</b> (126°-304°)	PEORIA TOWER <b>124.0 353.85</b>	GND CON <b>121.85 348.6</b>
----------------------------	--	-----------------------------------	-------------------------------------	--------------------------------



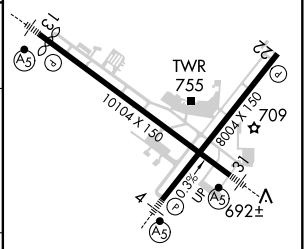
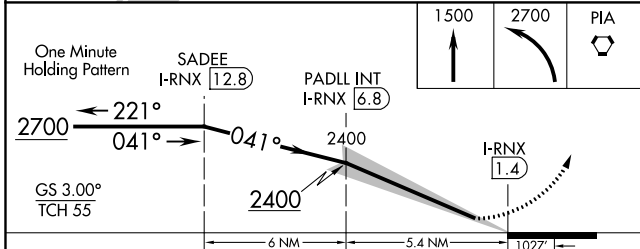
**DME REQUIRED**



EC-3, 09 SEP 2021 to 07 OCT 2021

EC-3, 09 SEP 2021 to 07 OCT 2021

ELEV 661	<b>D</b>	TDZE 652
----------	----------	----------



CATEGORY	A	B	C	D
S-ILS 4	SA CAT I RA 162/14	150	DA 802	
S-ILS 4	SA CAT II RA 112/12	100	DA 752	

**SA CATEGORY I & II ILS - SPECIAL AIRCREW & AIRCRAFT CERTIFICATION REQUIRED**

HIRL Rwy's 4-22 and 13-31