

APP CRS	Rwy Idg	8004
221°	TDZE	661
	Apt Elev	661

RNAV (GPS) RWY 22

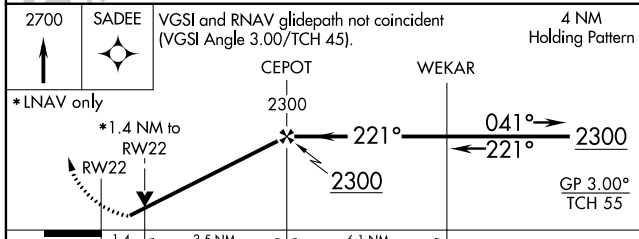
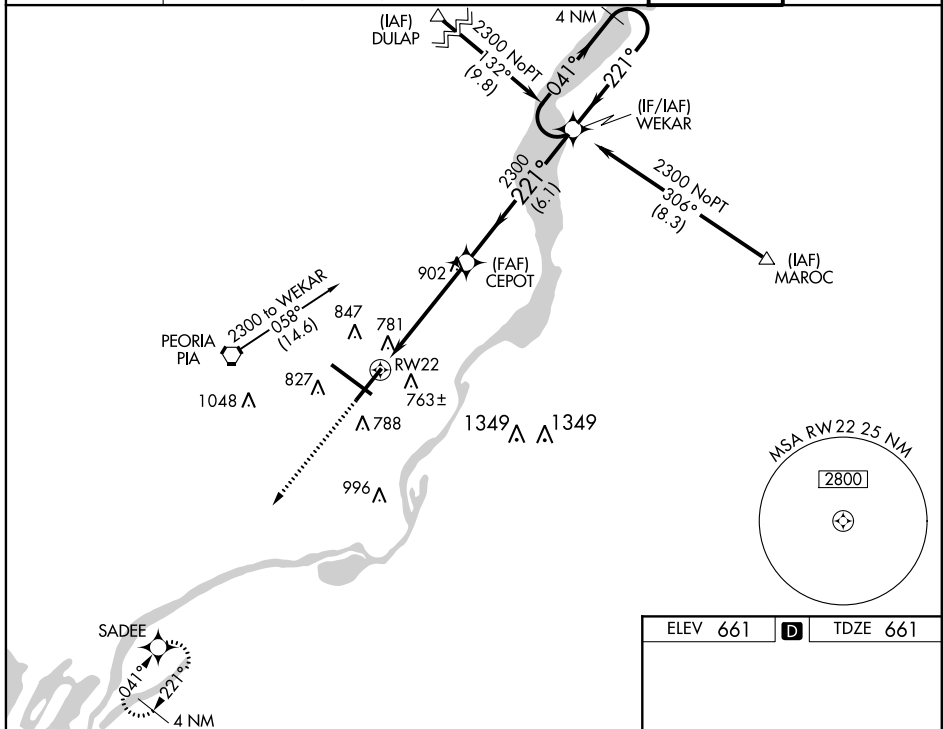
GENERAL DOWNING-PEORIA INTL (PIA)

RNP APCH.

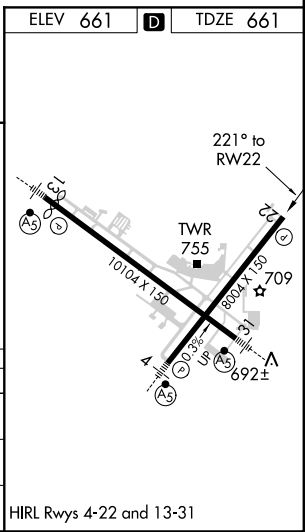
⚠ For uncompensated Baro-VNAV systems, LNAV/VNAV NA below -19°C or above 54°C. When local altimeter setting not received, use Logan County altimeter setting and increase all DA 89 feet and all MDA 100 feet, increase LNAV/VNAV DA all Cats visibility to 1½ mile, LNAV MDA Cat C and D visibility to ¾ mile, and Circling Cat C ½ mile and Cat D ½ mile. Baro-VNAV and VDP NA when using Logan County altimeter setting. Rwy 22 helicopter visibility reduction below ¾ SM NA. Circling Rwy 13, 31 NA at night.

MISSED APPROACH: Climb to 2700 direct SADEE and hold.

ATIS	PEORIA APP CON	PEORIA TOWER	GND CON
126.1 282.2	125.8 269.2 (305°-125°) 124.675 317.55 (126°-304°)	124.0 353.85	121.85 348.6



CATEGORY	A	B	C	D
LNAV/VNAV DA	1093-1⅜ 432 (500-1⅜)			
LNAV MDA	1160-1 499 (500-1)		1160-1⅜ 499 (500-1⅜)	
C CIRCLING	1160-1 499 (500-1)		1180-1½ 519 (600-1½)	1400-2¼ 739 (800-2¼)



EC-3, 09 SEP 2021 to 07 OCT 2021

EC-3, 09 SEP 2021 to 07 OCT 2021