

VORTAC PIA <b>115.2</b> Chan <b>99</b>	APP CRS <b>281°</b>	Rwy Idg <b>10104</b> TDZE <b>651</b> Apt Elev <b>660</b>
--	------------------------	--

# VOR/DME or TACAN RWY 31

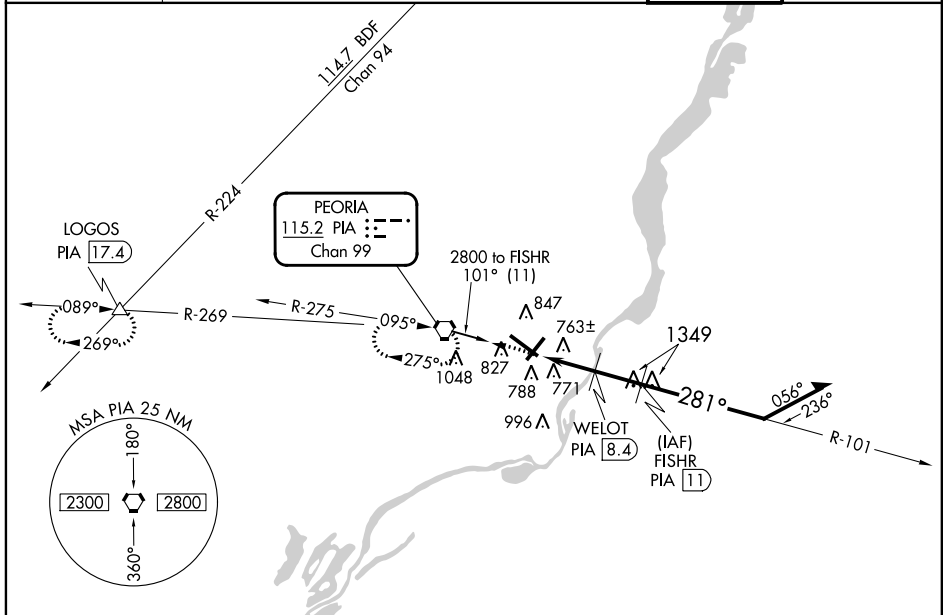
GENERAL DOWNING-PEORIA INTL(PIA)

**▼** If local altimeter setting not available, use Logan County altimeter setting and increase all MDAs 100 feet. Inoperative table does not apply. Straight-in and Circling Rwy 31 NA at night. Circling Rwy 13 NA at night. Rwy 31 helicopter visibility reduction below RVR 5000 NA.



**MISSED APPROACH:** Climb to 2800 direct PIA VORTAC and hold, continue climb-in-hold to 2800. (TACAN aircraft continue via PIA R-269 to LOGOS Int/PIA 17.4 DME and hold west, right turn, 089° inbound).

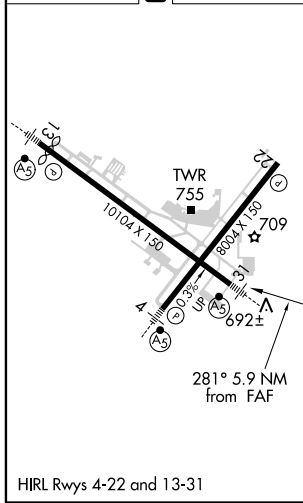
ATIS <b>126.1 282.2</b>	PEORIA APP CON <b>125.8 269.2</b> (305°-125°)	PEORIA TOWER <b>124.0 353.85</b>	GND CON <b>121.85 348.6</b>
----------------------------	--	-------------------------------------	--------------------------------



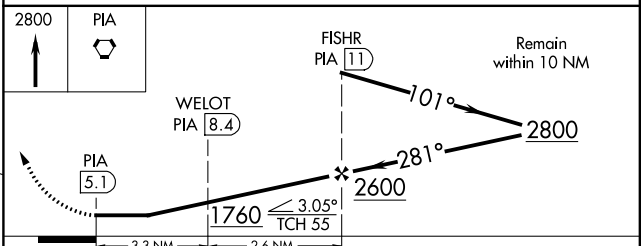
EC-3, 09 SEP 2021 to 07 OCT 2021

EC-3, 09 SEP 2021 to 07 OCT 2021

ELEV <b>660</b>	<b>D</b>	TDZE <b>651</b>
-----------------	----------	-----------------



PEORIA, ILLINOIS  
Amdt 9A 26MAR20



CATEGORY	A	B	C	D
S-31	1040/50 389 (400-1)			1040/60 389 (400-1½)
<b>C</b> CIRCLING	1160-1 499 (500-1)		1180-1½ 519 (600-1½)	1400-2 739 (800-2)

GENERAL DOWNING-PEORIA INTL (PIA)  
40°40'N-89°42'W **VOR/DME or TACAN RWY 31**