

LOC/DME I-PWK 109.75 Chan 34 (Y)	APP CRS 161°	Rwy Idg TDZE Apt Elev	5001 643 647
--	------------------------	-----------------------------	---

ILS or LOC RWY 16

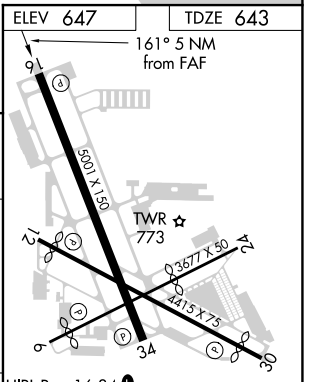
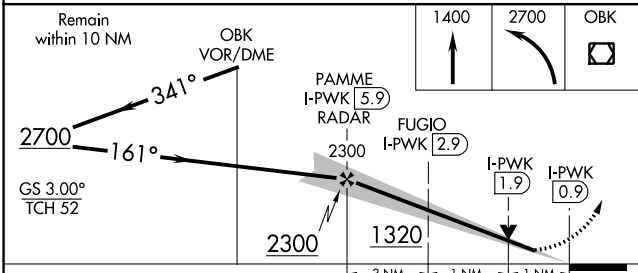
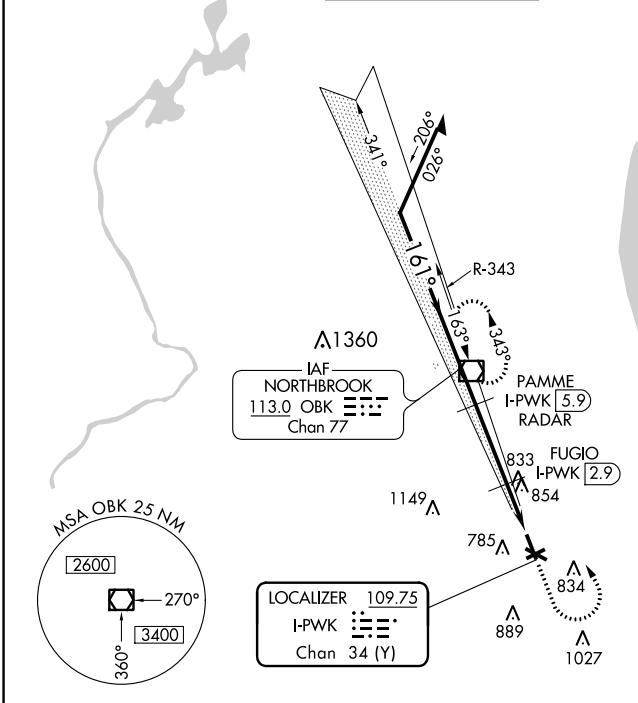
CHICAGO EXEC (PWK)

DME required.

▽ Circling Rwy 6, 12, 24, 30, 34 NA at night.
▲ Rwy 16 helicopter visibility reduction below ¾ SM NA.

MISSED APPROACH: Climb to 1400 then climbing left turn to 2700 direct OBK VOR/DME and hold, continue climb-in-hold to 2700.

ATIS 124.2	CHICAGO APP CON 120.55 306.925	EXECUTIVE TOWER ★ 119.9 (CTAF) 0	GND CON 121.7	CLNC DEL 124.7 (when twr closed)	UNICOM 122.95
----------------------	--	---	-------------------------	---	-------------------------



CATEGORY	A	B	C	D
S-ILS 16		927-7/8	284 (300-7/8)	
S-LOC 16		1020-1	377 (400-1)	
C CIRCLING	1140-1 493 (500-1)	1160-1 513 (600-1)	1200-1½ 553 (600-2)	1460-2¾ 813 (900-2¾)

HIRL Rwy 16-34 0	
MIRL Rwys 6-24 and 12-30 0	
REIL Rwys 12 and 30	
REIL Rwys 16 and 34 0	
RLLS Rwy 16 0	
FAF to MAP 5 NM	
Knots	60 90 120 150 180
Min:Sec	5:00 3:20 2:30 2:00 1:40

EC-3, 09 SEP 2021 to 07 OCT 2021

EC-3, 09 SEP 2021 to 07 OCT 2021