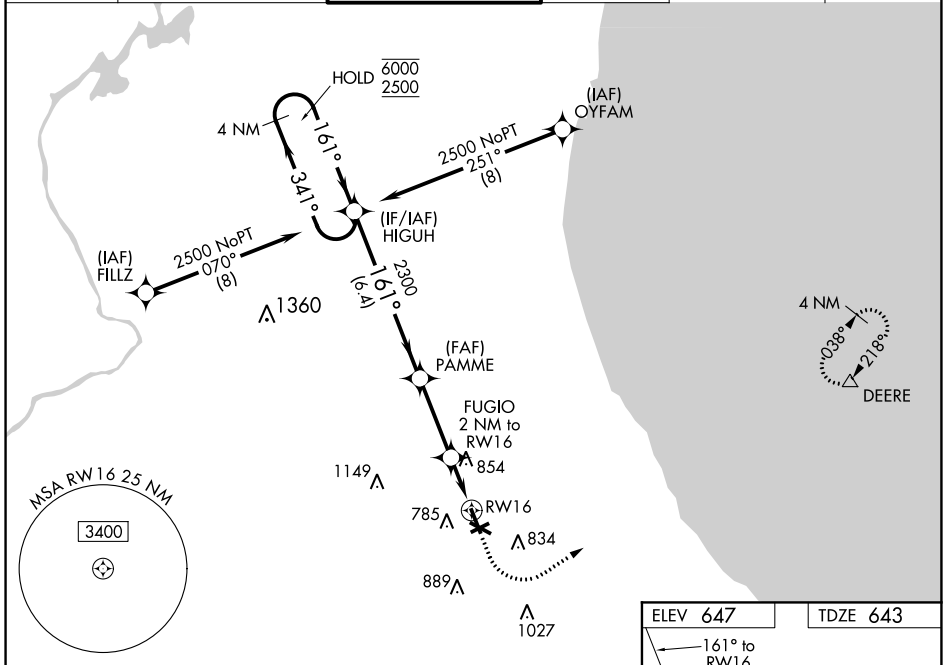


WAAS CH 45627 W16A	APP CRS 161°	Rwy Idg TDZE Apt Elev	5001 643 647
--	------------------------	-----------------------------	---

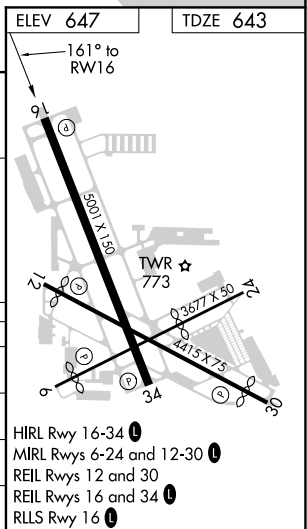
RNAV (GPS) RWY 16

CHICAGO EXEC (PWK)

RNP APCH - GPS		<p>⚠ Circling Rwy 6, 12, 24, 30, 34 NA at night. Rwy 16 helicopter visibility reduction below ¾ SM NA. For uncompensated Baro-VNAV systems, LNAV/VNAV NA below -1°C or above 54°C.</p>			MISSED APPROACH: Climb to 1200 then climbing left turn to 2100 direct DEERE and hold.	
ATIS 124.2	CHICAGO APP CON 120.55 306.925	EXECUTIVE TOWER ★ 119.9 (CTAF) 0	GND CON 121.7	CLNC DEL 124.7 (when twr closed)	UNICOM 122.95	



4 NM Holding Pattern		HIGUH	PAMME	FUGIO 2 NM to RWY 16	1200	2100	DEERE
6000 ← 341°		→ 161°		2300			
2500		2300		1320			
GP 3.00° TCH 52		6.4 NM		3 NM	0.7 NM	1.3 NM	
CATEGORY	A	B	C	D			
LPV DA	927-7/8		284 (300-7/8)				
LNAV/VNAV DA	1083-1¼		440 (500-1¼)				
LNAV MDA	1120-1		477 (500-1)		1120-1¾		477 (500-1¾)
C CIRCLING	1140-1 493 (500-1)		1160-1 513 (600-1)		1200-1½ 553 (600-1½)		1460-2¾ 813 (900-2¾)



EC-3, 09 SEP 2021 to 07 OCT 2021

EC-3, 09 SEP 2021 to 07 OCT 2021