

RNAV (GPS) RWY 26L

GERALD R FORD INTL (G.R.R.)

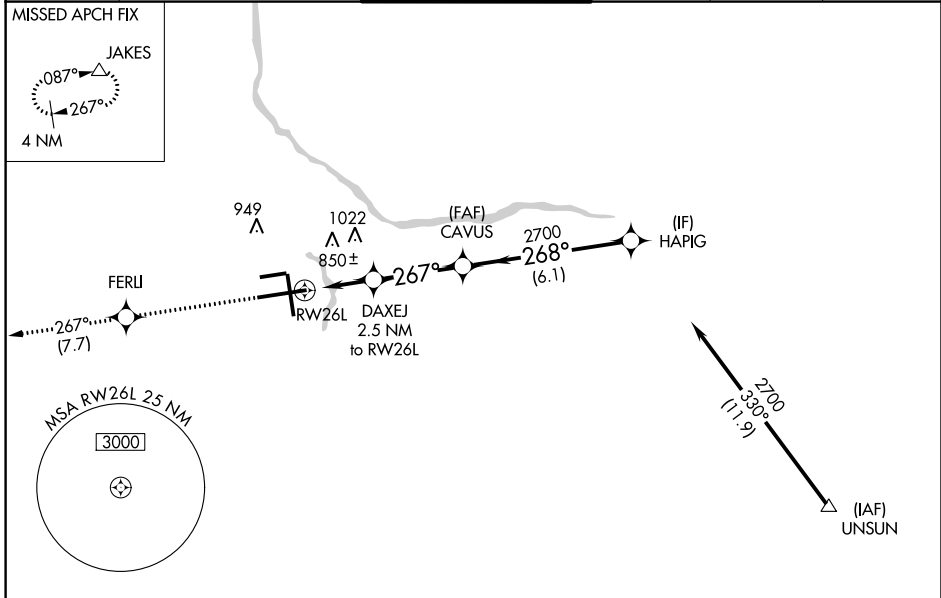
WAAS CH 86713 W26B	APP CRS 267°	Rwy Idg 10001 TDZE 790 Apt Elev 794
--	------------------------	--

ASR For uncompensated Baro-VNAV systems, LNAV/VNAV NA below -16°C (4°F) or above 54°C (130°F). DME/DME RNP-0.3 NA. For inoperative ALS, increase LNAV/VNAV Cat D visibility to RVR 5000.
** RVR 1800 authorized with use of FD or AP or HUD to DA.

MALSR

MISSED APPROACH:
Climb to 2700 direct FERLI and track 267° to JAKES and hold.

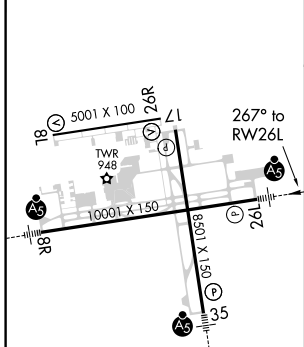
ATIS 118.725	GREAT LAKES APP CON * 128.4 257.6	GRAND RAPIDS TOWER * 135.65 (CTAF) 339.8	GND CON 121.8	CLNC DEL 119.3	UNICOM 122.95
------------------------	---	--	-------------------------	--------------------------	-------------------------



EC-1, 09 SEP 2021 to 07 OCT 2021

EC-1, 09 SEP 2021 to 07 OCT 2021

ELEV 794	D	TDZE 790
----------	----------	----------



MIRL Rwy 8L-26L
REIL Rwy 8L, 17 and 26R
HIRL Rwy 8R-26L and 17-35

2700	FERLI	tr 267°	JAKES	VGSI and RNAV glidepath not coincident (VGSI Angle 3.00/TCH 73).		
			DAXEJ	CAVUS	HAPIO	
			2.5 NM to RW26L	2700	2700	
* LNAV only.			* 1.3 NM to RW26L	* 1640	GP 3.00° TCH 55	
			RW26L			
			1.3 NM	1.2 NM	3.2 NM	6.1 NM
CATEGORY	A	B	C	D		
LPV DA **	990/24 200 (200-½)					
LNAV/VNAV DA	1114/24 324 (400-½)			1114/40 324 (400-¾)		
LNAV MDA	1280/24	490 (500-½)	1280/40 490 (500-¾)	1280/50 490 (500-1)		
C CIRCLING	1280-1	486 (500-1)	1340-1½ 546 (600-1½)	1360-2 566 (600-2)		