

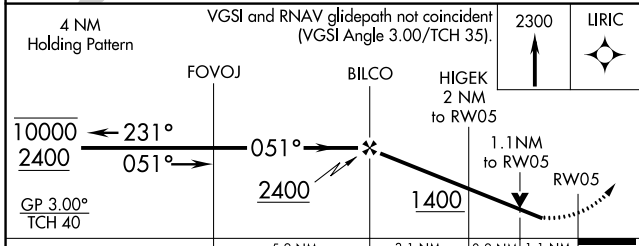
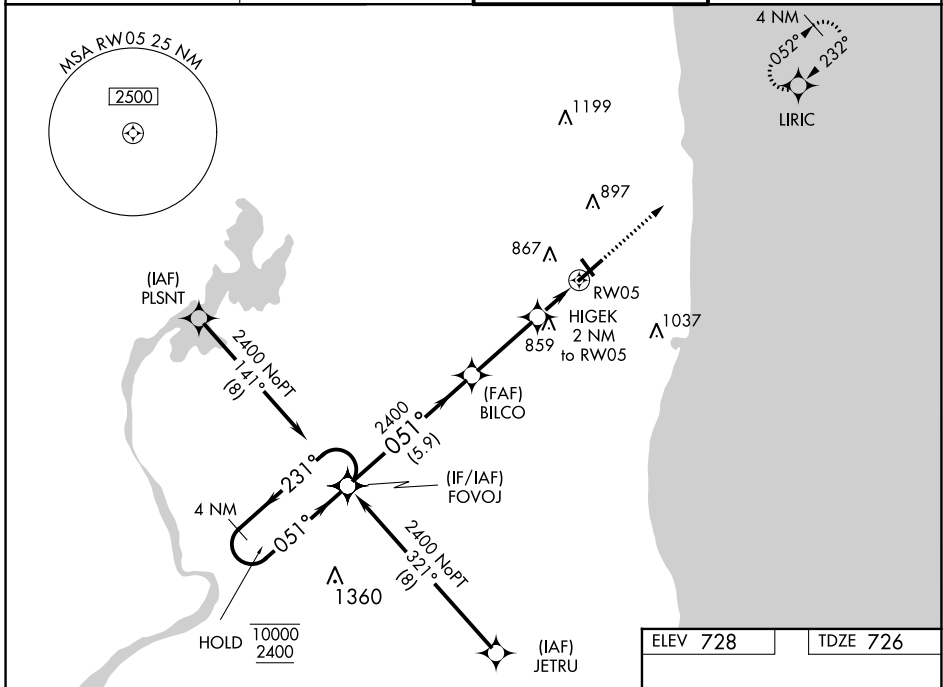
WAAS CH <b>81812</b> <b>W05A</b>	APP CRS <b>051°</b>	Rwy Idg <b>6001</b> TDZE <b>726</b> Apt Elev <b>728</b>
--	------------------------	---

# RNAV (GPS) RWY 5

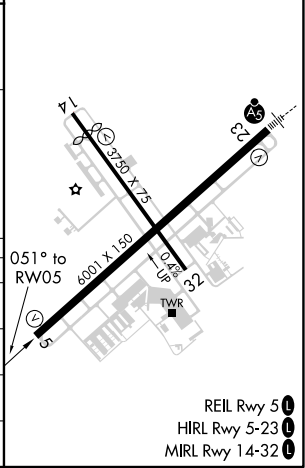
WAUKEGAN NTL (UGN)

RNP APCH - GPS.	MISSED APPROACH: Climb to 2300 direct LIRIC and hold.
<p>▼ Rwy 5 helicopter visibility reduction below 3/4 SM NA. For uncompensated Baro-VNAV systems, LNAV/VNAV NA below -16°C or above 54°C.</p> <p>▲ Circling Rwy 14, 32 NA at night.</p>	

ATIS <b>132.4</b>	CHICAGO APP CON <b>120.55</b>	WAUKEGAN TOWER ★ <b>120.05(CTAF) 273.55</b>	GND CON <b>121.65</b>
----------------------	----------------------------------	--	--------------------------



ELEV 728	TDZE 726
----------	----------



CATEGORY	A	B	C	D
LPV DA		976-3/4	250 (300-3/4)	
LNAV/VNAV DA		1013-7/8	287 (300-7/8)	
LNAV MDA	1120-1	394 (400-1)	1120-1 1/8	394 (400-1 1/8)
CIRCLING	1220-1	492 (500-1)	1220-1 1/2	1400-2 1/4 672 (700-2 1/4)

- REIL Rwy 5 1
- HIRL Rwy 5-23 1
- MIRL Rwy 14-32 1

EC-3, 09 SEP 2021 to 07 OCT 2021

EC-3, 09 SEP 2021 to 07 OCT 2021