

|   |                        |   |
|---|------------------------|---|
| LOC/DME I-JAK<br><b>110.3</b><br>Chan <b>40</b> | APP CRS<br><b>064°</b> | Rwy Idg <b>7352</b><br>TDZE <b>551</b><br>Apt Elev <b>618</b> |
|---|------------------------|---|

# ILS or LOC RWY 6

ST LOUIS LAMBERT INTL (STL)

DME or RADAR required. DME or RADAR required for procedure entry.



MISSED APPROACH: Climb to 2200 then climbing left turn to 3000 direct STL VORTAC and hold, continue climb-in-hold to 3000.

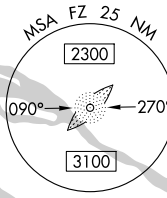
For inop ALS, increase S-ILS 6 Cat E visibility to RVR 4000 and S-LOC 6 Cat C/D/E visibility to 1 1/2 SM.

|  |   |   |   |                                |       |
|--|---|---|---|--------------------------------|-------|
| D-ATIS<br><b>125.025</b><br><b>379.925</b> | ST. LOUIS APP CON<br><b>132.125 360.6</b> | ST. LOUIS TOWER<br><b>132.475 239.275</b> | GND CON<br><b>121.9 348.6</b> (Inbound)<br><b>121.65 377.175</b> (Outbound)<br><b>118.925 227.125</b> (Rwy 11/29) | CLNC DEL<br><b>119.5 363.1</b> | CPDLC |
|--|---|---|---|--------------------------------|-------|

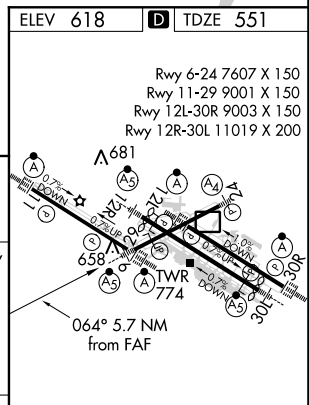
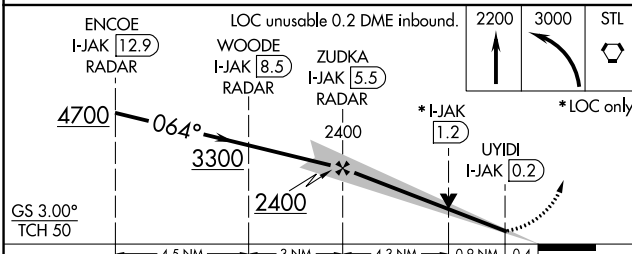
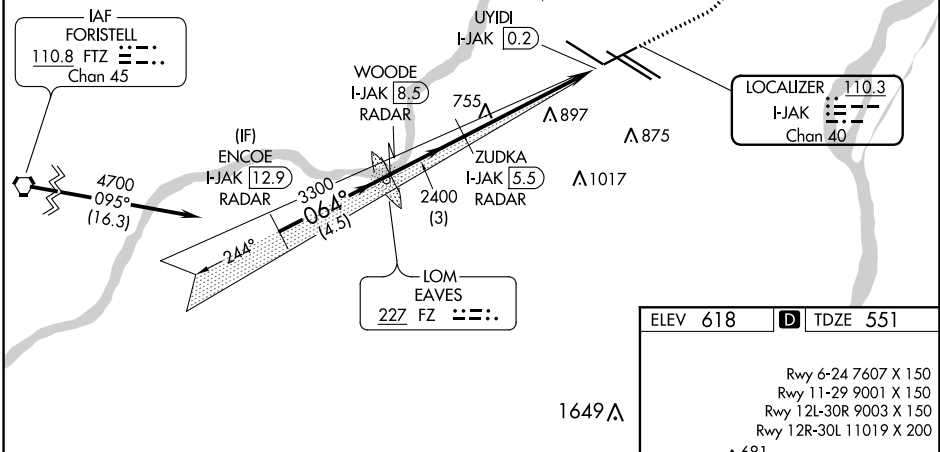
ALTERNATE MISSED APCH FIX

090°  
270°  
R-090

TROY  
TOY  
116.0  
Chan 107



Procedure NA for arrival on FTZ VORTAC airway radials 082 CW 095.



|          |                      |               |         |             |   |
|----------|----------------------|---------------|---------|-------------|---|
| CATEGORY | A                    | B             | C       | D           | E |
| S-ILS 6  | 751/24 200 (200-1/2) |               |         |             |   |
| S-LOC 6  | 1020/24              | 469 (500-1/2) | 1020/50 | 469 (500-1) |   |

HIRL all Rwy's  
TDZ/CL Rwy's 11, 12L, 12R, 29, and 30R

FAF to MAP 5.3 NM

|         |      |      |      |      |      |
|---------|------|------|------|------|------|
| Knots   | 60   | 90   | 120  | 150  | 180  |
| Min:Sec | 5:18 | 3:32 | 2:39 | 2:07 | 1:46 |

NC-3, 07 OCT 2021 to 04 NOV 2021

NC-3, 07 OCT 2021 to 04 NOV 2021