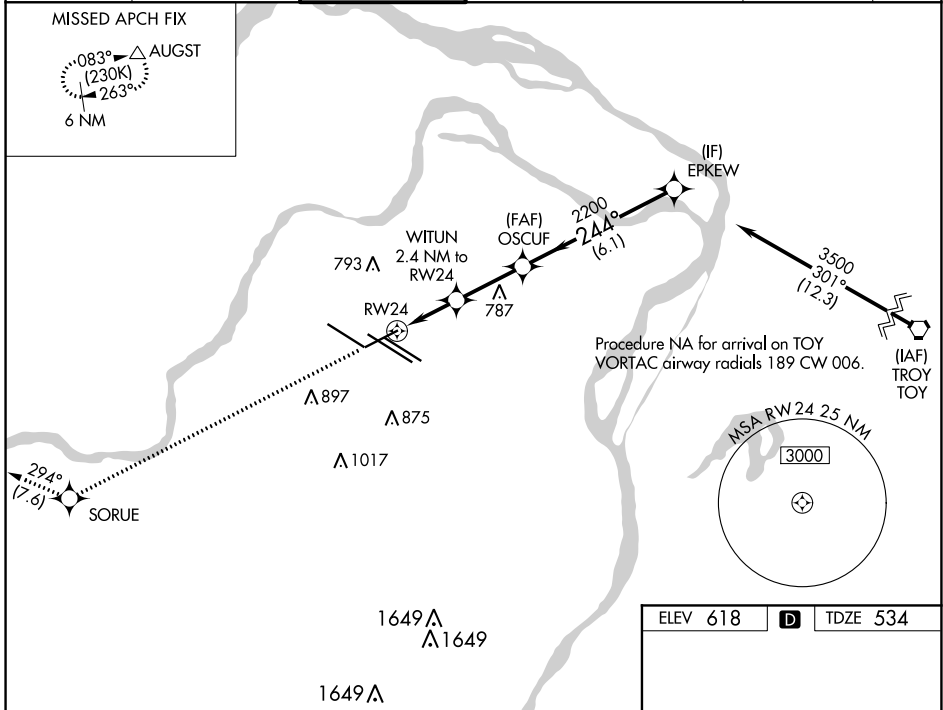


WAAS CH <b>87021</b> <b>W24A</b>	APP CRS <b>244°</b>	Rwy Idg TDZE Apt Elev	<b>7602</b> <b>534</b> <b>618</b>
--	------------------------	-----------------------------	---

# RNAV (GPS) RWY 24

ST LOUIS LAMBERT INTL (STL)

D-ATIS <b>125.025</b> <b>379.925</b>	ST. LOUIS APP CON <b>132.125 360.6</b>	ST. LOUIS TOWER <b>120.05 284.6</b>	GND CON	CLNC DEL <b>119.5 363.1</b>	CPDLC
			<b>121.9 348.6</b> (Inbound) <b>121.65 377.175</b> (Outbound) <b>118.925 227.125</b> (Rwy 11/29)		



3000	SORUE	tr 294°	AUGST $\Delta$	EPKEW	
*LNAV only					
		WITUN 2.4 NM to RW24	OSCUF 2200	3500	
		*1.6 NM to RW24	1340*	2200	
		1.6 NM	0.8 NM	2.7 NM	
				6.1 NM	
				GP 3.00° TCH 50	
CATEGORY	A	B	C	D	E
LPV DA		734/40	200 (200-¾)		
LNAV/VNAV DA		931/50	397 (400-1)		
LNAV MDA	1080/40	546 (500-¾)	1080-1¾	546 (500-1¾)	

ELEV 618	<b>D</b>	TDZE 534
----------	----------	----------

Rwy 6-24 7607 X 150  
Rwy 11-29 9001 X 150  
Rwy 12L-30R 9003 X 150  
Rwy 12R-30L 11019 X 200

244° to RW24

681  $\Delta$   
658  $\Delta$   
774 TWR

HIRL all Rwys  
TDZ/CL Rwwys 11, 12L, 12R, 29, and 30R

NC-3, 07 OCT 2021 to 04 NOV 2021

NC-3, 07 OCT 2021 to 04 NOV 2021