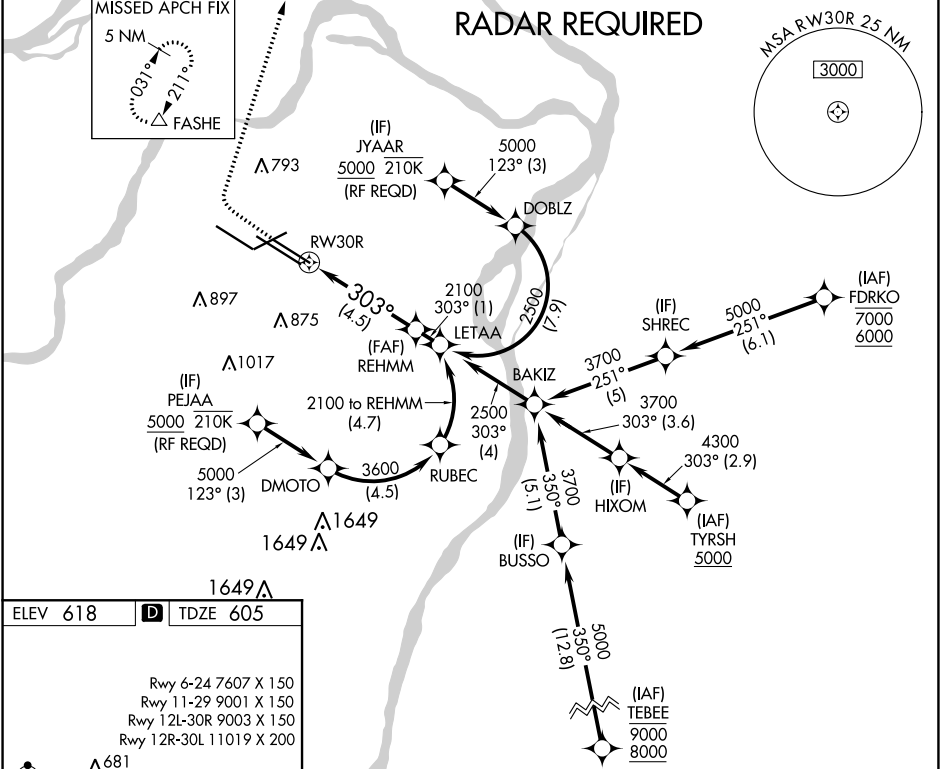


APP CRS	Rwy Idg	<b>9003</b>
<b>303°</b>	TDZE	<b>605</b>
	Apt Elev	<b>618</b>

# RNAV (RNP) Z RWY 30R

ST LOUIS LAMBERT INTL (STL)

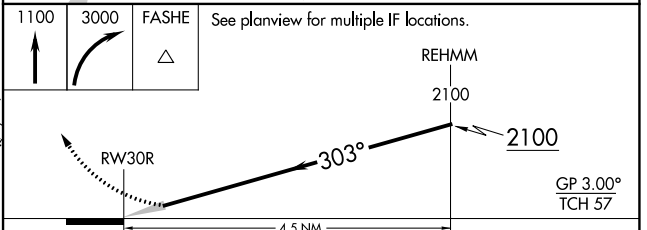
<p>▼ For uncompensated Baro-VNAV systems, procedure NA below -16°C (4°F) or above 54°C (130°F). GPS required. Simultaneous approach authorized with Rwy 29, except for arrivals at JYAAR and PEJAA. Use of FD or AP required during simultaneous operations. For inop ALS, increase RNP 0.30 all Cats visibility to RVR 6000.</p>			<p>ALSF-2</p>	<p>MISSED APPROACH: Climb to 1100 then climbing right turn to 3000 direct FASHE and hold.</p>	
<p>D-ATIS</p> <p><b>125.025</b></p> <p><b>379.925</b></p>	<p>ST. LOUIS APP CON</p> <p><b>132.125 360.6</b></p>	<p>ST. LOUIS TOWER</p> <p><b>120.05 284.6</b></p>	<p>GND CON</p> <p><b>121.9 348.6</b> (Inbound)</p> <p><b>121.65 377.175</b> (Outbound)</p> <p><b>118.925 227.125</b> (Rwy 11/29)</p>	<p>CLNC DEL</p> <p><b>119.5 363.1</b></p>	<p>CPDLC</p>



ELEV 618 **D** TDZE 605

Rwy 6-24 7607 X 150  
 Rwy 11-29 9001 X 150  
 Rwy 12L-30R 9003 X 150  
 Rwy 12R-30L 11019 X 200

HIRL all Rwys  
 TDZ/CL Rwys 11, 12L, 12R, 29, and 30R



CATEGORY	A	B	C	D
RNP 0.30 DA	969/40		364 (400-¾)	

## AUTHORIZATION REQUIRED

NC-3, 07 OCT 2021 to 04 NOV 2021

NC-3, 07 OCT 2021 to 04 NOV 2021