

ST. LOUIS, MISSOURI

TACAN RWY 12R

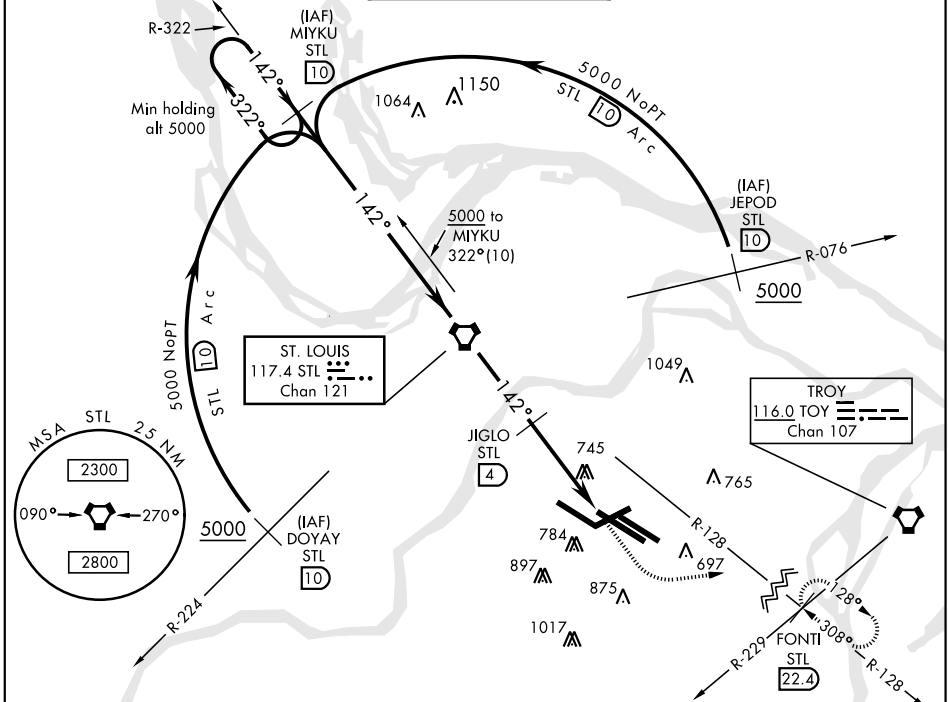
VORTAC STL 117.4 Chan 121	APCH CRS 142°	Rwy Ldg 10,552 TDZE 540 Arprt Elev 618
---	-------------------------	---

AL-360 [USAF]

ST. LOUIS LAMBERT INTL (KSTL)

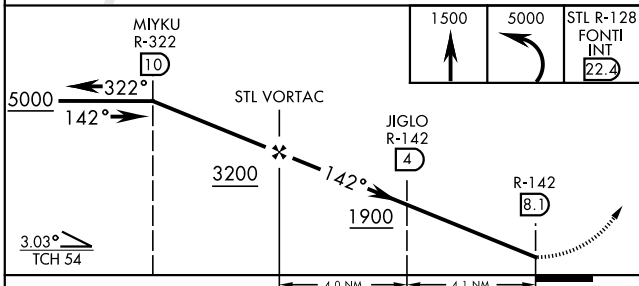
<p>▼ * Inoperative table does not apply.</p> <p>▲ NA Visibility reduction by helicopters NA</p>	<p>MALSR</p>	<p>MISSED APPROACH: Climb to 1500 then climbing left turn to 5000 intercept STL R-128 to FONTI INT/STL 22.4 DME and hold, continue climb in hold.</p>
---	--------------	---

<p>ATIS</p> <p>125.025 379.925</p>	<p>ST. LOUIS APP CON</p> <p>121.02 338.25</p>	<p>N ST. LOUIS TOWER S</p> <p>120.05 132.475 118.5 284.6 239.275 257.7</p>	<p>GND CON</p> <p>(Inlbd) 121.9 348.6 (Outlbd) 121.65 377.175 (West) 118.925 227.125</p>	<p>CLNC DEL</p> <p>119.5 363.1</p>
---	--	--	---	---

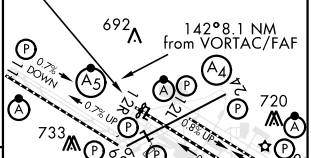


EMERG SAFE ALT 100 NM 3500

ELEV 618	TDZE 540
----------	----------



Rwy 6-24 7607 x 150	Rwy 11-29 9001 x 150
Rwy 12L-30R 9003 x 150	Rwy 12R-30L 11,019 x 200
Rwy 12R Ldg 10,552'	
Rwy 30L Ldg 10,818'	



CATEGORY	A	B	C	D	E
S-12R *	1060/50	520 (500-1)	1060-1½ 520(500-1½)	1060-1¾	520 (500-1¾)
CIRCLING	NOT AUTHORIZED				

HIRL all Rwy
REIL Rwy 12L
TDZL/CL Rwy 11-29,
12L-30R, and 12R

ST. LOUIS, MISSOURI 38°45'N-90°22'W ST. LOUIS LAMBERT INTL (KSTL)

Amdt 1 18200

TACAN RWY 12R

NC-3, 07 OCT 2021 to 04 NOV 2021

NC-3, 07 OCT 2021 to 04 NOV 2021