

ST. LOUIS, MISSOURI

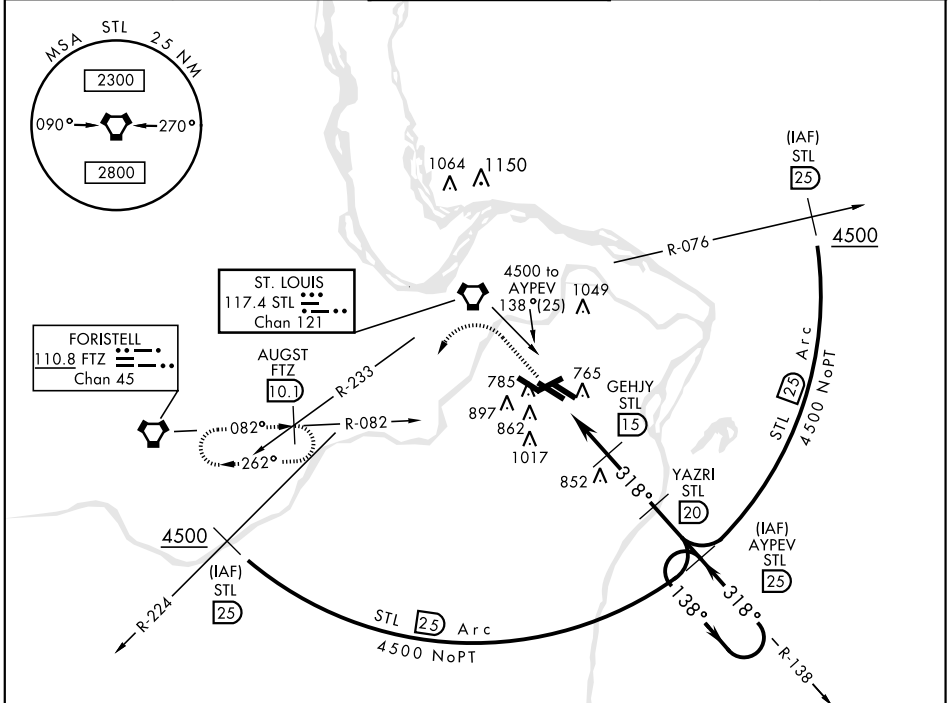
TACAN RWY 30L

VORTAC STL 117.4 Chan 121	APCH CRS 318°	Rwy ldg 10,818 TDZE 583 Arprt Elev 618
---	-------------------------	---

AL-360 [USAF]

ST. LOUIS LAMBERT INTL (KSTL)

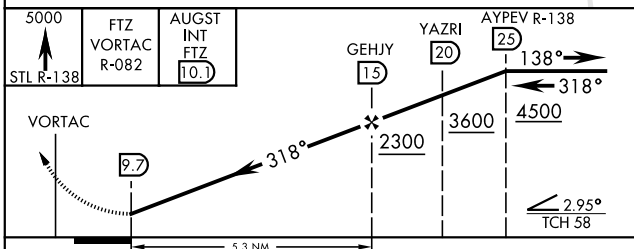
* Inoperative table does not apply.		MALSR	MISSED APPROACH: Climb to 5000 via STL R-138 and FTZ VORTAC R-082 to AUGST INT/FTZ 10.1 DME and hold.				
NA	ATIS 125.025 379.925	ST. LOUIS APP CON 121.02 338.25	N 120.05 S 284.6	ST. LOUIS TOWER W 132.475 E 239.275	S 118.5 W 257.7	GND CON 121.9 348.6 (Inbnd) (Outbnd) (West) 121.65 377.175 118.925 227.125	CLNC DEL 119.5 363.1



NC-3, 07 OCT 2021 to 04 NOV 2021

NC-3, 07 OCT 2021 to 04 NOV 2021

EMERG SAFE ALT 100 NM 3500



ELEV 618	TDZE 583
Rwy 6-24 7607 x 150 Rwy 11-29 9001 x 150 Rwy 12L-30R 9003 x 150 Rwy 12R-30L 11,019 x 200 Rwy 12R ldg 10,552' Rwy 30L ldg 10,818'	
HIRL All Rwy REIL Rwy 12L TDZL/CL Rwy 11-29, 12L-30R, and 12R	

318° 5.3 NM from FAF

ST. LOUIS, MISSOURI
Amdt 1 18200

38°45'N-90°22'W

ST. LOUIS LAMBERT INTL (KSTL)

TACAN RWY 30L