


WAAS CH <b>93504</b> <b>W18A</b>	APP CRS <b>180°</b>	Rwy Idg TDZE <b>641</b> Apt Elev <b>678</b>	<b>10000</b>
--	------------------------	---	--------------

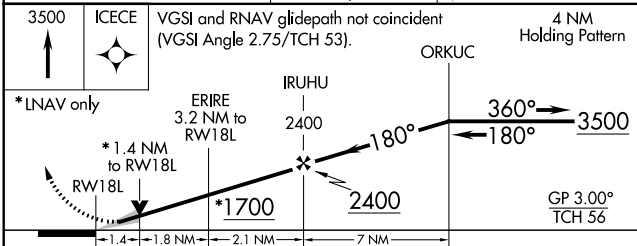
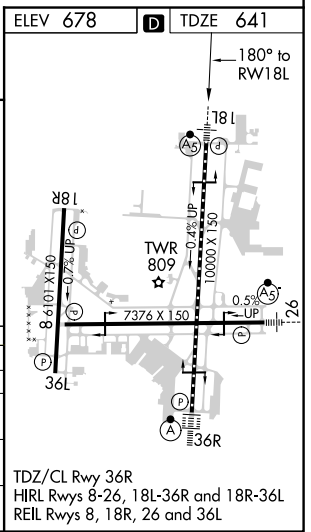
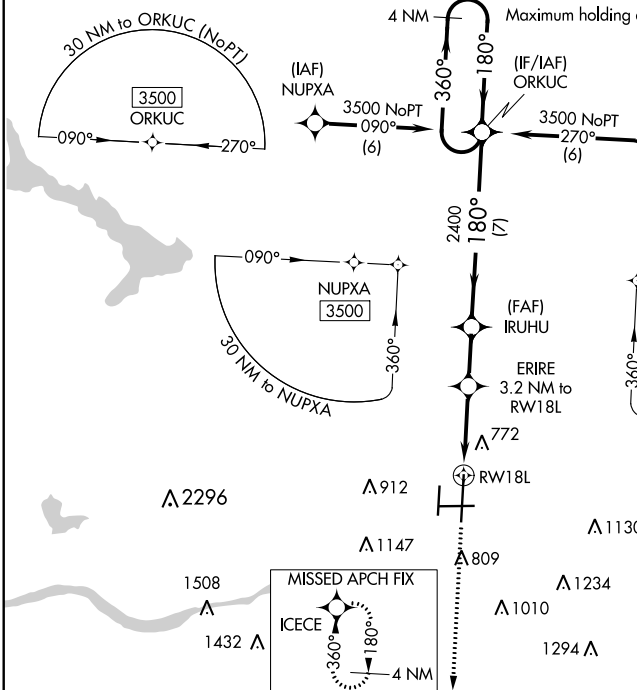
# RNAV (GPS) RWY 18L

TULSA INTL (TUL)

**⚠** For uncompensated Baro-VNAV systems, LNAV/VNAV NA below -13°C (9°F) or above 54°C (130°F). Circling NA for Cat E south of Rwy 8-26. DME/DME RNP-0.3 NA.  
**⚠** For inop MALSR, increase LPV all Cats visibility to RVR 4500, LNAV/VNAV all Cats visibility to 1½ mile, and LNAV Cat E visibility to 1¼ mile. Simultaneous approach authorized with ILS or LOC Rwy 18R. LNAV procedure NA during simultaneous operations. Use of FD or AP providing RNAV track guidance required during simultaneous operations.

**MALSR**  
  
**MISSED APPROACH:**  
 Climb to 3500 direct ICECE and hold.

D-ATIS <b>124.9 377.2</b>	TULSA APP CON <b>124.0 338.3</b>	TULSA TOWER <b>121.2 310.8</b> (Rwys 18L-36R, 8-26) <b>118.7 257.8</b> (Rwy 18R-36L)	GND CON <b>121.9 348.6</b>	CLNC DEL <b>134.05 284.7</b>
------------------------------	-------------------------------------	--	-------------------------------	---------------------------------



CATEGORY	A	B	C	D	E
LPV DA	908/24		267 (300-½)		
LNAV/VNAV DA	1128-1¼		487 (500-1¼)		
LNAV MDA	1080/24	439 (500-½)	1080/40		439 (500-¾)
CIRCLING	1120-1 442 (500-1)	1160-1 482 (500-1)	1520-2½ 842 (900-2½)	1520-2¾ 842 (900-2¾)	1520-3 842 (900-3)

SC-1, 07 OCT 2021 to 04 NOV 2021

SC-1, 07 OCT 2021 to 04 NOV 2021