

WAAS CH 69614 W18B	APP CRS 180°	Rwy Idg TDZE 668 Apt Elev 678
--	------------------------	---

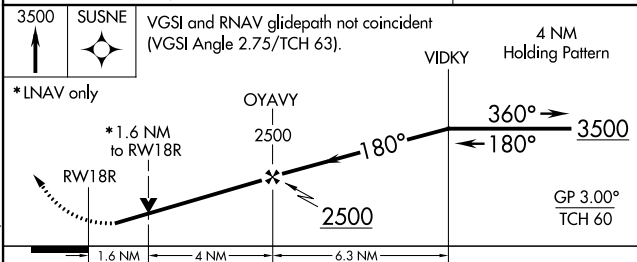
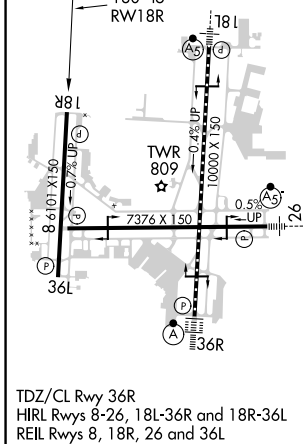
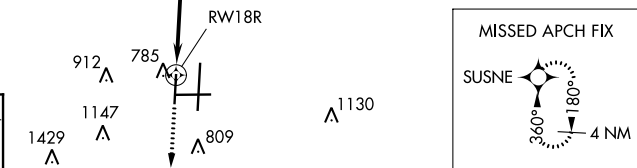
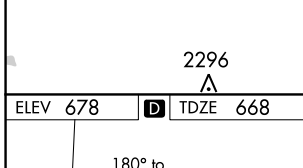
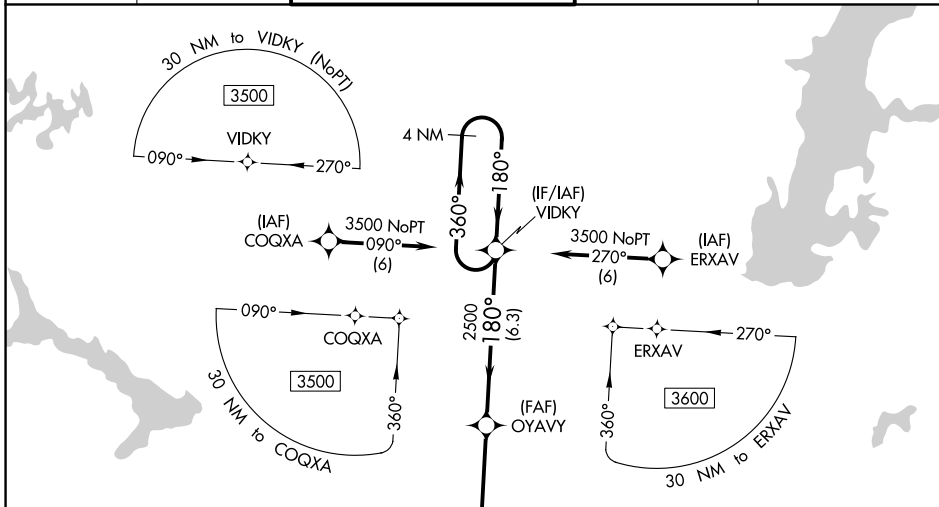
RNAV (GPS) RWY 18R

TULSA INTL (TUL)

⚠ For uncompensated Baro-VNAV systems, LNAV/VNAV NA below -13°C (9°F) or above 54°C (130°F). Circling NA for Cat E south of Rwy 8-26. DME/DME RNP-0.3 NA. Helicopter visibility reduction below ¾ SM NA. Simultaneous approach authorized with ILS or LOC Rwy 18L.
ASR LNAV procedure NA during simultaneous operations. Use of FD or AP providing RNAV track guidance required during simultaneous operations.

MISSED APPROACH:
Climb to 3500 direct SUSNE and hold.

D-ATIS 124.9 377.2	TULSA APP CON 124.0 338.3	TULSA TOWER 121.2 310.8 (Rwys 18L-36R, 8-26) 118.7 257.8 (Rwy 18R-36L)	GND CON 121.9 348.6	CLNC DEL 134.05 284.7
------------------------------	-------------------------------------	--	-------------------------------	---------------------------------



CATEGORY	A	B	C	D	E
LPV DA	918-7/8		250 (300-7/8)		
LNAV/VNAV DA	979-1 1/8		311 (400-1 1/8)		
LNAV MDA	1160-1 492 (500-1)		1160-1 3/8 492 (500-1 3/8)		
C CIRCLING	1160-1 482 (500-1)		1520-2 1/2 842 (900-2 1/2)	1520-2 3/4 842 (900-2 3/4)	1520-3 842 (900-3)

SC-1, 07 OCT 2021 to 04 NOV 2021

SC-1, 07 OCT 2021 to 04 NOV 2021