

WAAS CH <b>93814</b> <b>W26A</b>	APP CRS <b>266°</b>	Rwy Idg TDZE Apt Elev	<b>7376</b> <b>652</b> <b>678</b>
--	------------------------	-----------------------------	---

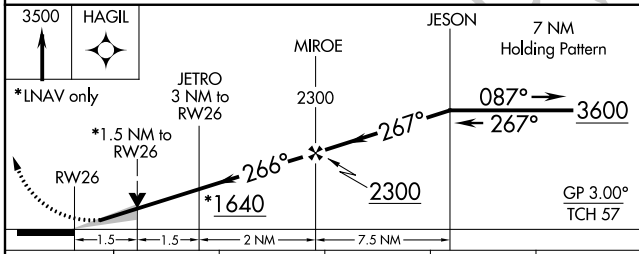
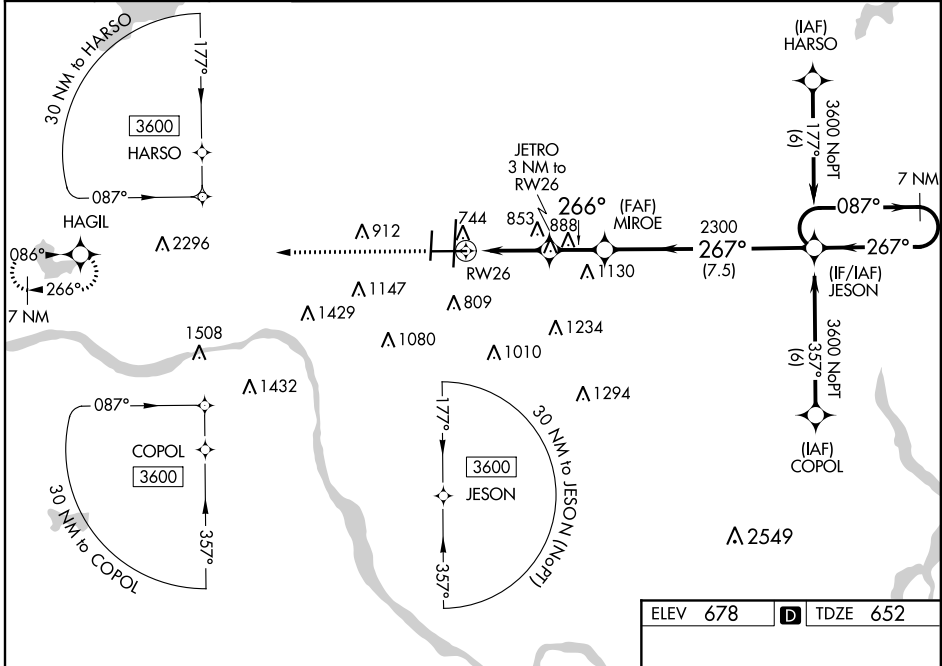
# RNAV (GPS) RWY 26

TULSA INTL (TUL)

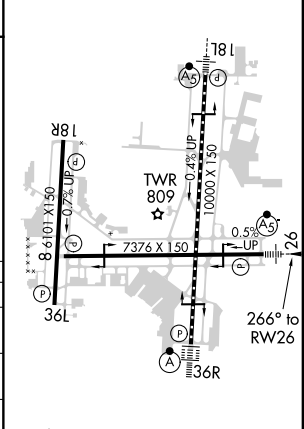
**ASR** Inop table does not apply to LPV DA. For uncompensated Baro-VNAV systems, LNAV/VNAV NA below -13°C (9°F) or above 54°C (130°F). For inop MALSR, increase LNAV/VNAV DA Cat E visibility to 1½ mile, LNAV MDA Cats A/B visibility to 1 mile and Cat E to 1½ mile. Circling NA for Cat E south of Rwy 8-26. DME/DME RNP-0.3 NA.

**MALSR**  
  
**MISSED APPROACH:** Climb to 3500 direct HAGIL and hold.

D-ATIS <b>124.9 377.2</b>	TULSA APP CON <b>124.0 338.3</b>	TULSA TOWER <b>121.2 310.8</b> (Rwys 18L-36R, 8-26) <b>118.7 257.8</b> (Rwy 18R-36L)	GND CON <b>121.9 348.6</b>	CLNC DEL <b>134.05 284.7</b>
------------------------------	-------------------------------------	--	-------------------------------	---------------------------------



ELEV 678	<b>D</b> TDZE 652
----------	-------------------



CATEGORY	A	B	C	D	E
LPV DA	852-¾ 200 (200-¾)				
LNAV/VNAV DA	1089-1 437 (500-1)				
LNAV MDA	1160-¾ 508 (500-¾)	1160-1 508 (500-1)			
<b>C</b> CIRCLING	1160-1 482 (500-1)	1520-2½ 842 (900-2½)	1520-2¾ 842 (900-2¾)	1520-3 842 (900-3)	

TDZ/CL Rwy 36R  
HIRL Rwys 8-26, 18L-36R and 18R-36L  
REIL Rwys 8, 18R, 26 and 36L

SC-1, 07 OCT 2021 to 04 NOV 2021

SC-1, 07 OCT 2021 to 04 NOV 2021