

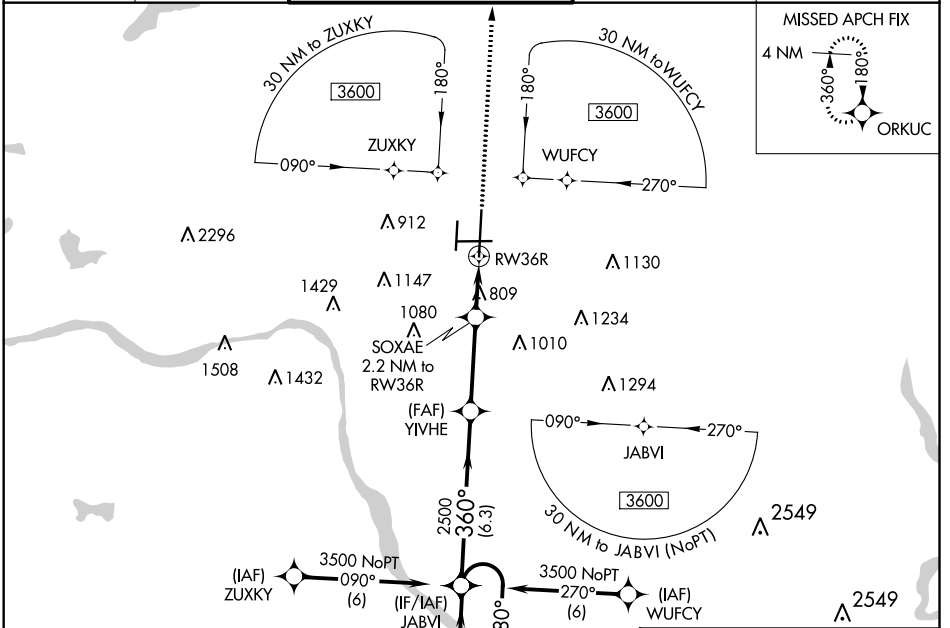
WAAS CH 82214 W36A	APP CRS 360°	Rwy Idg 10000 TDZE 650 Apt Elev 678
---------------------------------	------------------------	--

RNAV (GPS) RWY 36R

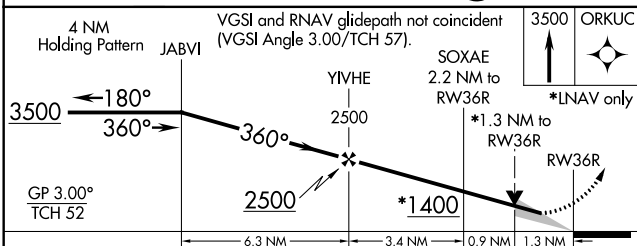
TULSA INTL (TUL)

	For uncompensated Baro-VNAV systems, LNAV/VNAV NA below -13°C (9°F) or above 54°C (130°F). Circling NA for Cat E south of Rwy 8-26. DME/DME RNP-0.3 NA. For inop ALSF-2, increase LPV Cat E visibility to RVR 4000, LNAV/VNAV all Cats visibility to 1/2 mile, and LNAV Cats C/D/E visibility to 1/2 mile.	ALSF-2 	MISSED APPROACH: Climb to 3500 direct ORKUC and hold.
	MISSED APCH FIX 		

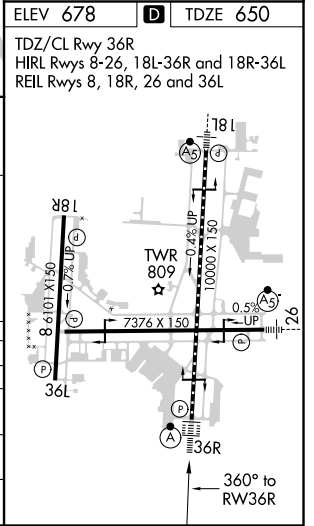
D-ATIS 124.9 377.2	TULSA APP CON 124.0 338.3	TULSA TOWER 121.2 310.8 (Rwys 18L-36R, 8-26) 118.7 257.8 (Rwy 18R-36L)	GND CON 121.9 348.6	CLNC DEL 134.05 284.7
------------------------------	-------------------------------------	--	-------------------------------	---------------------------------



ELEV 678	D TDZE 650
TDZ/CL Rwy 36R HIRL Rwys 8-26, 18L-36R and 18R-36L REIL Rwys 8, 18R, 26 and 36L	



CATEGORY	A	B	C	D	E
LPV DA	850/18		200 (200-1/2)		
LNAV/VNAV DA	1145-1 1/4		495 (500-1 1/4)		
LNAV MDA	1120/24 470 (500-1/2)		1120/50 470 (500-1)		
C CIRCLING	1120-1 442 (500-1)	1160-1 482 (500-1)	1520-2 1/2 842 (900-2 1/2)	1520-2 3/4 842 (900-2 3/4)	1520-3 842 (900-3)



SC-1, 07 OCT 2021 to 04 NOV 2021

SC-1, 07 OCT 2021 to 04 NOV 2021