

WAAS CH 63131 W08A	APP CRS 086°	Rwy Idg 7376 TDZE 671 Apt Elev 678
--	------------------------	---

RNAV (GPS) RWY 8

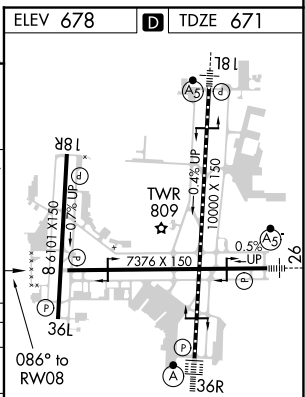
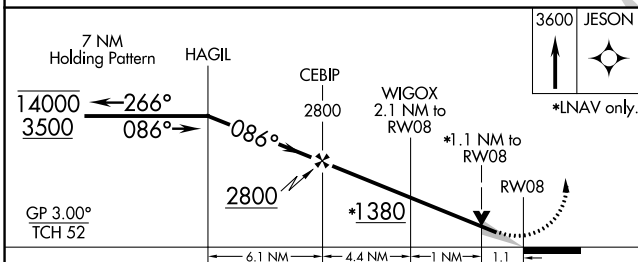
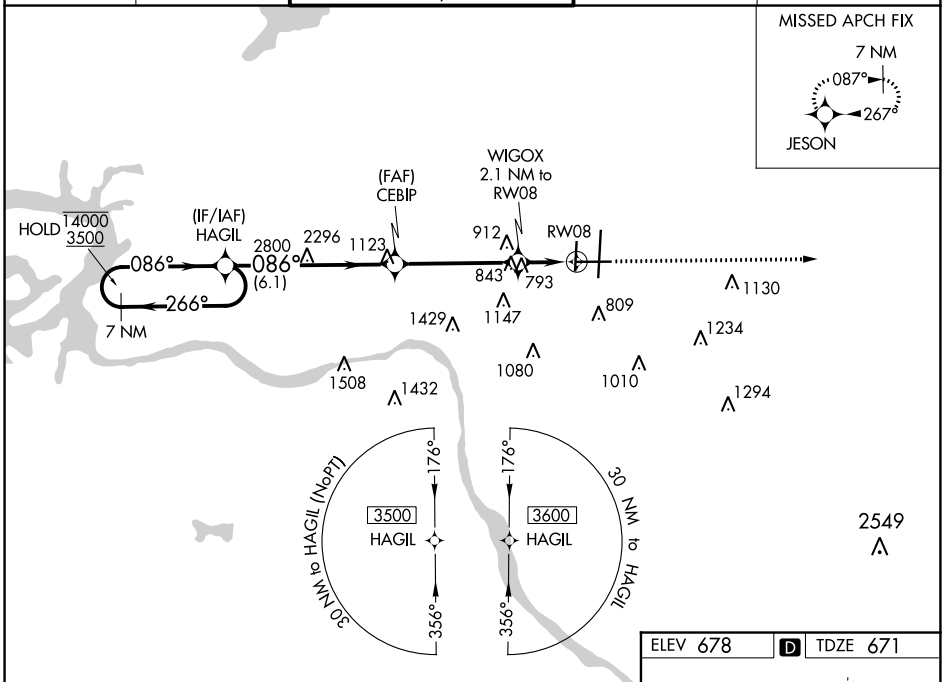
TULSA INTL (TUL)

RNP APCH.

⚠ Circling NA for Cat E south of Rwy 8-26. For uncompensated Baro-VNAV systems, LNAV/VNAV NA below -13°C or ASR above 54°C.

MISSED APPROACH: Climb to 3600 direct JESON and hold.

D-ATIS 124.9 377.2	TULSA APP CON 124.0 338.3	TULSA TOWER 121.2 310.8 (Rwys 18L-36R, 8-26) 118.7 257.8 (Rwy 18R-36L)	GND CON 121.9 348.6	CLNC DEL 134.05 284.7
------------------------------	-------------------------------------	--	-------------------------------	---------------------------------



CATEGORY	A	B	C	D	E
LPV DA		921- ³ / ₄	250 (300- ³ / ₄)		
LNAV/VNAV DA		985-1	314 (400-1)		
LNAV MDA	1060-1	389 (400-1)	1060- ¹ / ₈	389 (400- ¹ / ₈)	
C CIRCLING	1120-1 442 (500-1)	1160-1 482 (500-1)	1520-2 ¹ / ₂ 842 (900-2 ¹ / ₂)	1520-2 ³ / ₄ 842 (900-2 ³ / ₄)	1520-3 842 (900-3)

TDZ/CL Rwy 36R
HIRL Rwys 8-26, 18L-36R and 18R-36L
REIL Rwys 8, 18R, 26 and 36L

SC-1, 07 OCT 2021 to 04 NOV 2021

SC-1, 07 OCT 2021 to 04 NOV 2021