

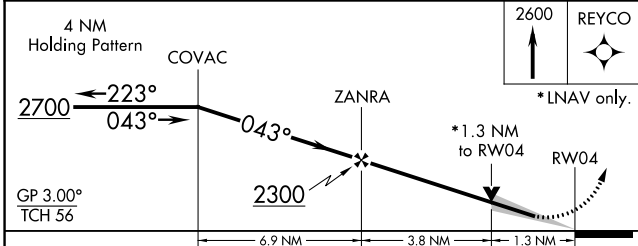
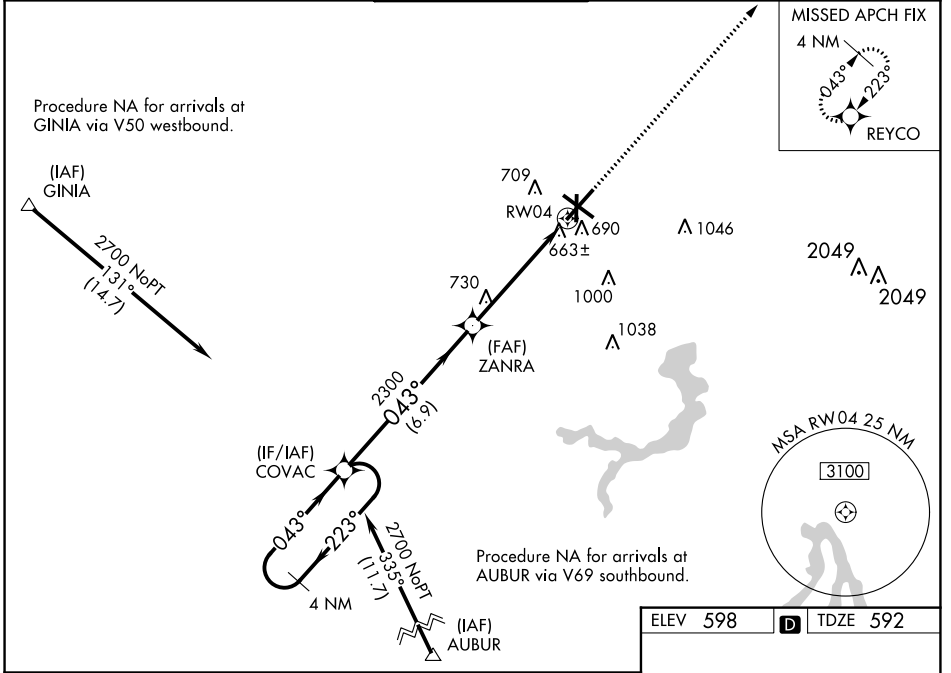
WAAS CH <b>70309</b> <b>W04A</b>	APP CRS <b>043°</b>	Rwy Idg TDZE Apt Elev	<b>7927</b> <b>592</b> <b>598</b>
--	------------------------	-----------------------------	---

# RNAV (GPS) RWY 4

ABRAHAM LINCOLN CAPITAL (SPI)

<p><b>⚠</b> DME/DME RNP-0.3 NA. For uncompensated Baro-VNAV systems LNAV/VNAV NA below -16°C (4°F) and above 47°C (116°F). When local altimeter setting not received, use Lincoln altimeter setting: increase all DA 57 feet and MDA 60 feet, increase Circling Cat C and D visibility ¼ SM. Baro-VNAV and VDP NA when using Lincoln altimeter setting. For inoperative MALSR increase LPV all Cats visibility to RVR 5000.</p>	<p>MALSR</p>	<p>MISSED APPROACH: Climb to 2600 direct REYCO and hold.</p>
---	--------------	--

ATIS <b>127.65 270.1</b>	SPRINGFIELD APP CON * <b>126.15 323.0</b>	SPRINGFIELD TOWER * <b>121.3 (CTAF) 257.8</b>	GND CON <b>121.9 348.6</b>	CLNC DEL <b>121.7</b>	UNICOM <b>122.95</b>
-----------------------------	--	--	-------------------------------	--------------------------	-------------------------



ELEV 598	D	TDZE 592
----------	---	----------

TWR 698

MIRL Rwy 18-36  
REIL Rwy 13  
HIRL Rws 4-22 and 13-31

CATEGORY	A	B	C	D
LPV DA		854/24	262 (300-½)	
LNAV/VNAV DA		931/40	339 (400-¾)	
LNAV MDA	1060/24	468 (500-½)	1060/50	468 (500-1)
CIRCLING	1060-1 462 (500-1)	1100-1 502 (600-1)	1360-2¼ 762 (800-2¼)	1380-2½ 782 (800-2½)

EC-3, 07 OCT 2021 to 04 NOV 2021

EC-3, 07 OCT 2021 to 04 NOV 2021