


VORTAC SPI <b>112.7</b> Chan 74	APP CRS <b>296°</b>	Rwy Idg TDZE Apt Elev	<b>7000</b> <b>590</b> <b>598</b>
---------------------------------------	------------------------	-----------------------------	---

# VOR/DME RWY 31

ABRAHAM LINCOLN CAPITAL (SPI)

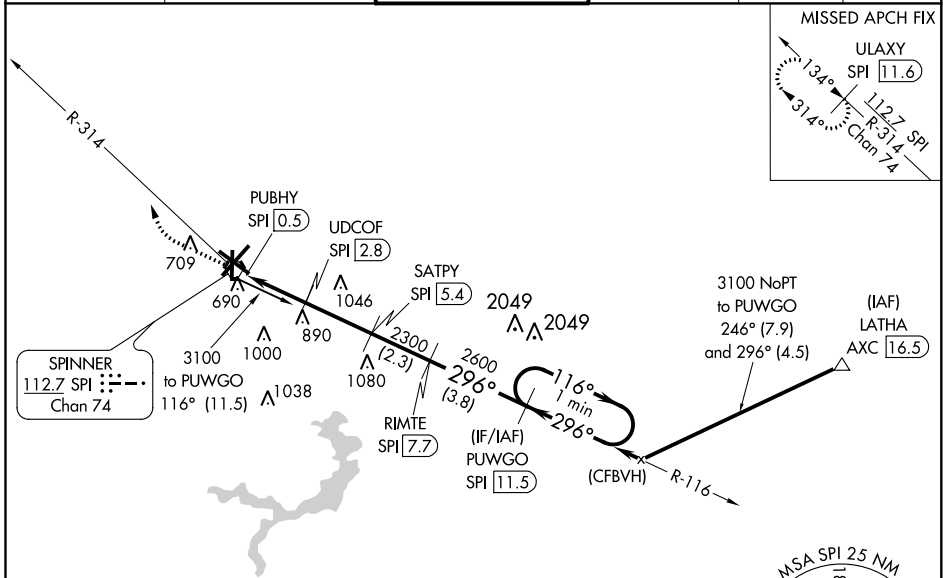
**⚠** When local altimeter setting not received, use Lincoln altimeter setting and increase all MDA 60 feet; increase S-31 Cat C/D visibility 1/8 mile and Circling Cat C/D visibility 1/4 mile. For inoperative MALSR, increase S-31 Cat C/D visibility to 1 1/4 mile. When using Lincoln altimeter setting increase S-31 Cat C/D visibility to 1 3/8 mile. VDP NA with Lincoln altimeter setting.

**MALSR**

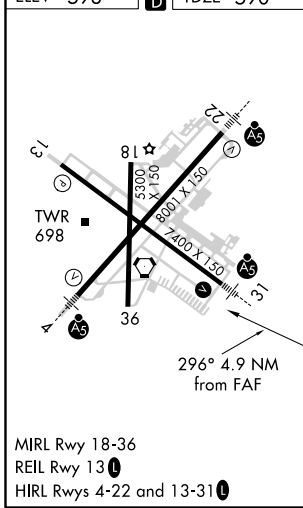


**MISSED APPROACH:** Climb to 1500 then climbing right turn to 2500 on SPI VORTAC R-314 to ULAXY/SPI 11.6 DME and hold.

ATIS <b>127.65 270.1</b>	SPRINGFIELD APP CON ★ <b>126.15 323.0</b>	SPRINGFIELD TOWER ★ <b>121.3 (CTAF) 257.8</b>	GND CON <b>121.9 348.6</b>	CLNC DEL <b>121.7</b>	UNICOM <b>122.95</b>
-----------------------------	--	--	-------------------------------	--------------------------	-------------------------



ELEV 598	<b>D</b>	TDZE 590
----------	----------	----------



1500	2500	ULAXY SPI 11.6	RIMTE SPI 7.7	PUWGO SPI 11.5	One Minute Holding Pattern				
↑	↪	R-314							
PUBHY SPI 0.5		UDCOF SPI 2.8	SATPY SPI 5.4	116° → 3100					
2300		2600	296°	← 296°					
1420		2300	296°	← 296°					
1.8		0.5	2.6 NM	2.3 NM	3.8 NM				
3.18° TCH 54									
MSA SPI 2.5 NM	<table border="1"> <tr> <td>2700</td> <td>3100</td> </tr> <tr> <td>180°</td> <td>360°</td> </tr> </table>					2700	3100	180°	360°
2700	3100								
180°	360°								
CATEGORY	A	B	C	D					
S-31	1200-1/2	610 (700-1/2)	1200-1 3/8	610 (700-1 3/8)					
<b>C</b> CIRCLING	1200-1	602 (700-1)	1360-2 1/4	1380-2 1/2					
			762 (800-2 1/4)	782 (800-2 1/2)					

EC-3, 07 OCT 2021 to 04 NOV 2021

EC-3, 07 OCT 2021 to 04 NOV 2021