

LOC/DME I-SGF <b>109.9</b> Chan <b>36</b>	APP CRS <b>019°</b>	Rwy Idg TDZE Apt Elev	<b>7003</b> <b>1265</b> <b>1268</b>
-------------------------------------------------	------------------------	-----------------------------	-------------------------------------------

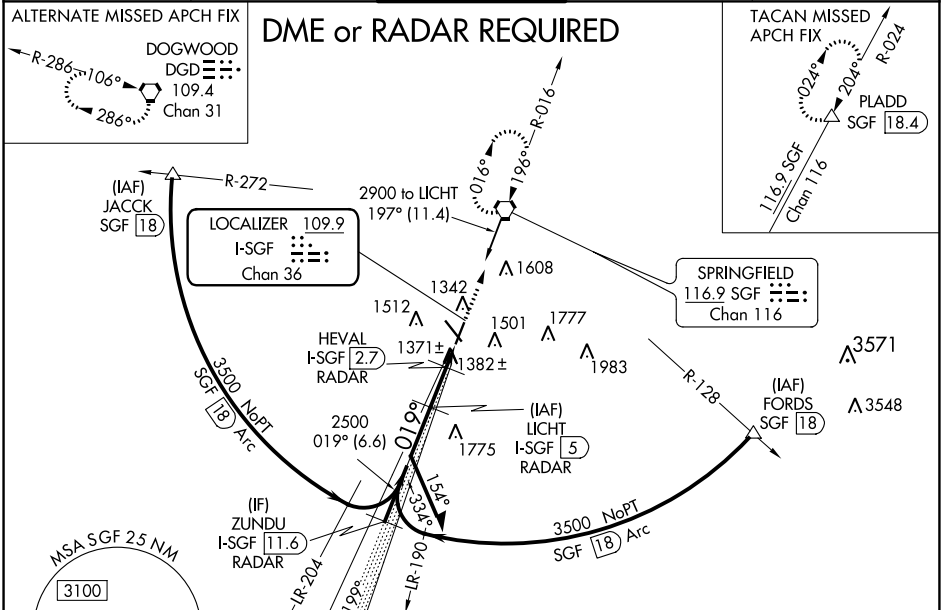
**ILS or LOC RWY 2**  
SPRINGFIELD-BRANSON NTL (SGF)

**⚠ DME or RADAR Required.** For inop MALSR, increase S-ILS 2 Cat E visibility to RVR 4000, and S-LOC 2 Cat E visibility to 1/4 mile.  
#RVR 1800 authorized with use of FD or AP or HUD to DA.

**MALSR**

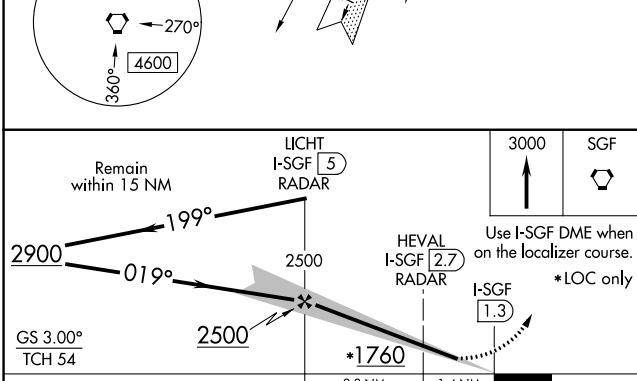
**MISSED APPROACH:** Climb to 3000 direct SGF VORTAC and hold (TACAN aircraft continue on SGF VORTAC R-024 to PLADD/SGF 18.4 DME and hold northeast, right turn, 204° inbound).

<b>ATIS</b> <b>135.125</b>	<b>SPRINGFIELD APP CON</b> <b>121.1 290.5</b>	<b>SPRINGFIELD TOWER</b> <b>119.9 257.8</b>	<b>GND CON</b> <b>121.9 251.15</b>	<b>CLNC DEL</b> <b>123.675</b>
-------------------------------	--------------------------------------------------	------------------------------------------------	---------------------------------------	-----------------------------------



NC-3, 07 OCT 2021 to 04 NOV 2021

NC-3, 07 OCT 2021 to 04 NOV 2021



**ELEV 1268** **D** **TDZE 1265**

**HIRL Rwy 2-20 and 14-32**  
**REIL Rwy 32**

**TWR 1361**

**019° 3.7 NM from FAF**

<b>FAF to MAP 3.7 NM</b>					
<b>Knots</b>	60	90	120	150	180
<b>Min:Sec</b>	3:42	2:28	1:51	1:29	1:14

CATEGORY	A	B	C	D	E
S-ILS 2	#1465/24 200 (200-1/2)				
S-LOC 2	1700/24	435 (500-1/2)	1700/40	435 (500-3/4)	
<b>CIRCLING</b>	1760-1 492 (500-1)	1820-1 552 (600-1)	1820-1 1/2 552 (600-1 1/2)	1920-2 652 (700-2)	2080-3 812 (900-3)