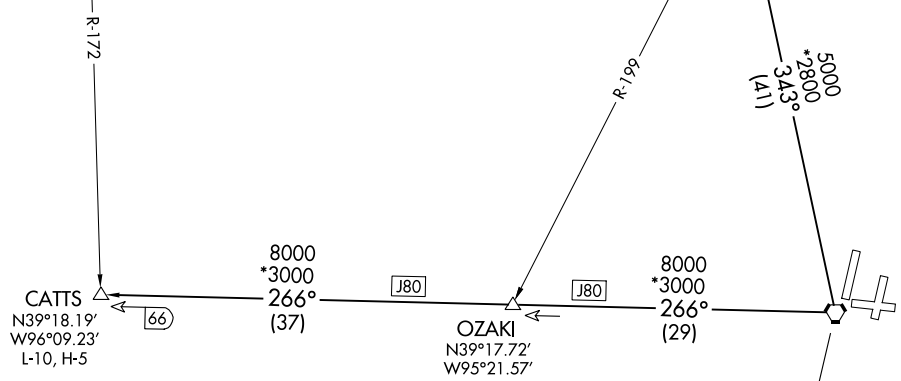


D-ATIS
128.375
CLNC DEL
135.7
CPDLC
KANSAS CITY DEP CON
124.7 284.7

PAWNEE CITY
112.4 PWE Chan 71

ST. JOSEPH
115.5 STJ Chan 102
N39°57.63' - W94°55.51'
L-10, H-5

KANSAS CITY
113.25 MCI Chan 79 (Y)
N39°17.12' - W94°44.22'



NC-3, 07 OCT 2021 to 04 NOV 2021

NC-3, 07 OCT 2021 to 04 NOV 2021

NOTE: RADAR required.

TAKEOFF MINIMUMS:

Rwys 1L, 1R, 9, 19R, 19L, 27: Standard.

NOTE: Chart not to scale.

DEPARTURE ROUTE DESCRIPTION

TAKEOFF ALL RUNWAYS: Climb on assigned heading for RADAR vectors to appropriate route. Expect filed altitude 10 minutes after departure.

CATTS TRANSITION (CHIEF7.CATTS): From over MCI VORTAC on MCI R-266 to CATTS INT.

ST. JOSEPH TRANSITION (CHIEF7.STJ): From over MCI VORTAC on MCI R-343 and STJ R-160 to STJ VORTAC.