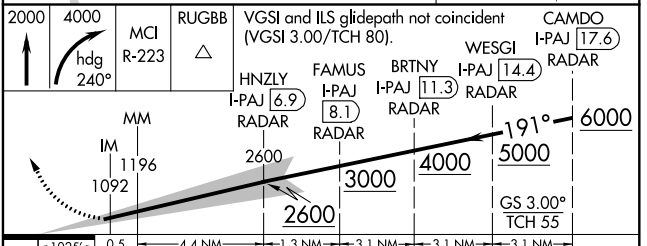
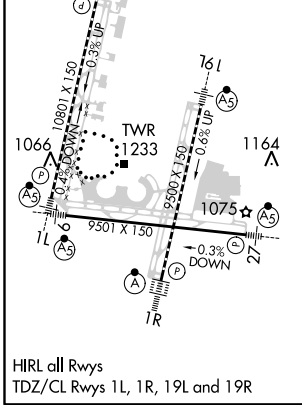
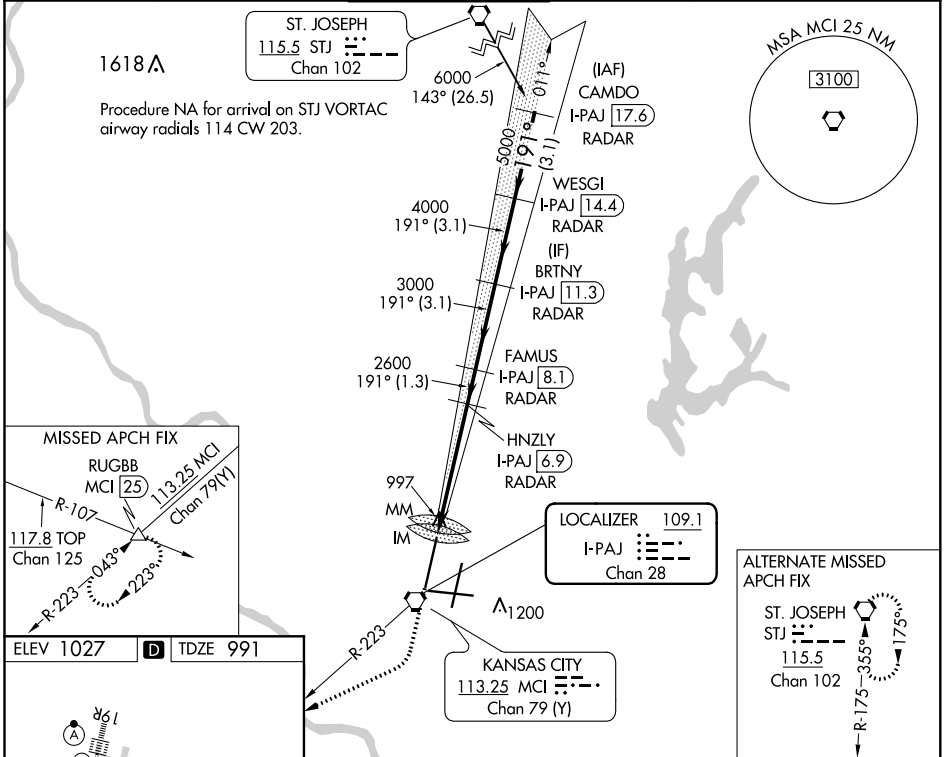


LOC/DME I-PAJ 109.1 Chan 28	APP CRS 191°	Rwy Idg 10801 TDZE 991 Apt Elev 1027
--	------------------------	---

ILS RWY 19R (CAT II & III)

KANSAS CITY INTL (MCI)

DME or RADAR required.		ALSF-2	MISSED APPROACH: Climb to 2000 then climbing right turn to 4000 on heading 240° and on MCI VORTAC R-223 to RUGBB INT/MCI 25 DME and hold.		
<p>⚠ Simultaneous approach authorized. CAT II: RVR 1000 authorized with specific OPSPEC, MSPEC, or LOA approval and use of autoland or HUD to touchdown.</p>					
D-ATIS 128.375	KANSAS CITY APP CON 120.95 318.1	INTERNATIONAL TOWER 128.2 254.25	GND CON 121.8	CLNC DEL 135.7	CPDLC



CATEGORY	A	B	C	D
S-ILS 19R	CAT II RA 105/12 100 DA 1091			
S-ILS 19R	CAT III RVR 07			

CATEGORY II & III ILS - SPECIAL AIRCREW & AIRCRAFT CERTIFICATION REQUIRED

NC-3, 07 OCT 2021 to 04 NOV 2021

NC-3, 07 OCT 2021 to 04 NOV 2021