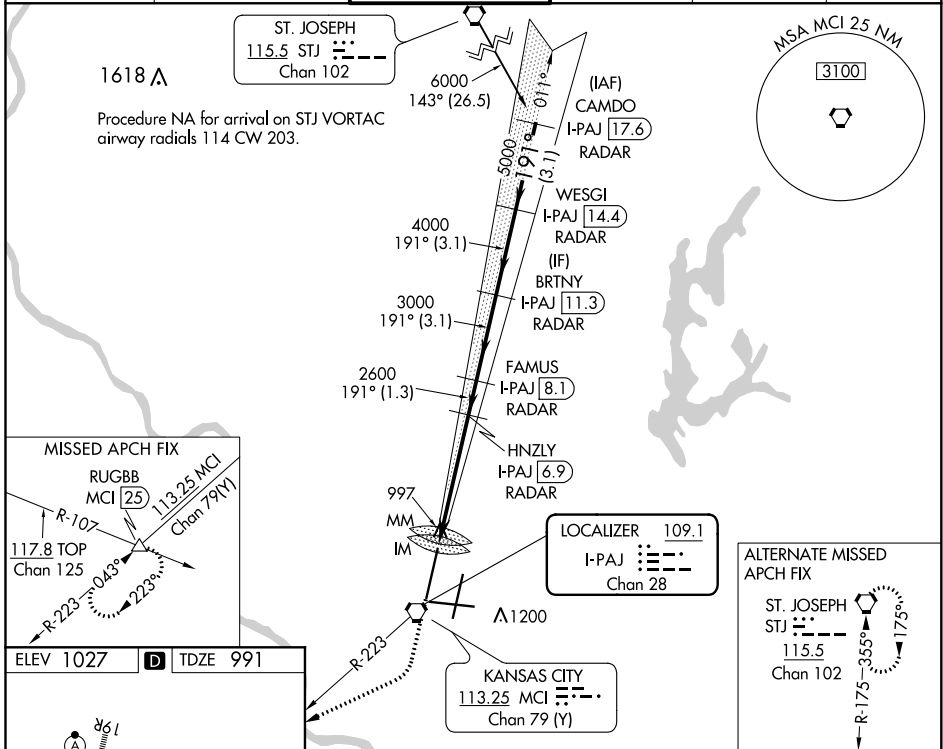


LOC/DME I-PAJ 109.1 Chan 28	APP CRS 191°	Rwy Idg 10801 TDZE 991 Apt Elev 1027
------------------------------------------	------------------------	-----------------------------------------------------------------

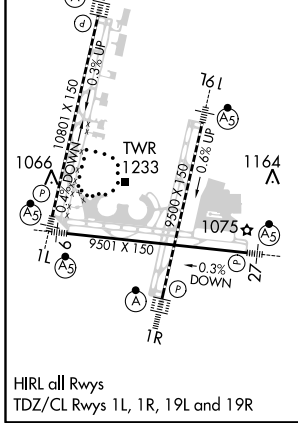
ILS RWY 19R (SA CAT I)

KANSAS CITY INTL (MCI)

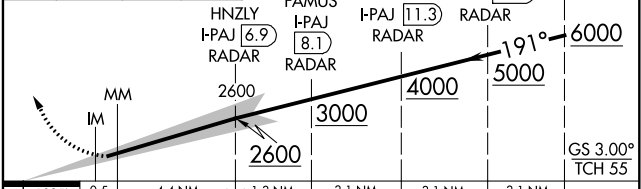
DME or RADAR required.		ALSF-2	MISSED APPROACH: Climb to 2000 then climbing right turn to 4000 on heading 240° and on MCI VORTAC R-223 to RUGBB INT/MCI 25 DME and hold.		
<p>Simultaneous approach authorized. Requires specific OPSPEC, MSPEC, or LOA approval and use of HUD to DH.</p>					
D-ATIS 128.375	KANSAS CITY APP CON 120.95 318.1	INTERNATIONAL TOWER 128.2 254.25	GND CON 121.8	CLNC DEL 135.7	CPDLC



ELEV 1027	D	TDZE 991
-----------	---	----------



2000	4000	MCI R-223	RUGBB	VGSI and ILS glidepath not coincident (VGSI Angle 3.00/TCH 80).	CAMDO I-PAJ 17.6 RADAR
------	------	-----------	-------	-----------------------------------------------------------------	------------------------



1025	0.5	4.4 NM	1.3 NM	3.1 NM	3.1 NM	3.1 NM
CATEGORY		A	B	C	D	
S-ILS 19R		RA 135/14 150 DA 1141				

SA CATEGORY I ILS - SPECIAL AIRCREW & AIRCRAFT CERTIFICATION REQUIRED