

LOC/DME I-PVL 110.75 Chan 44 (Y)	APP CRS 011°	Rwy Idg TDZE Apt Elev 9500 1017 1026
-----------------------------------------------	------------------------	--------------------------------------------------------------------------

ILS RWY 1R (CAT II & III)

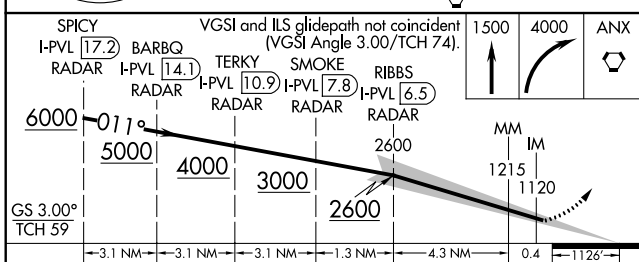
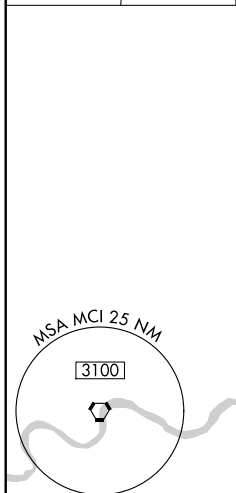
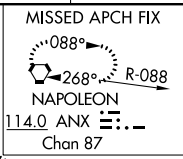
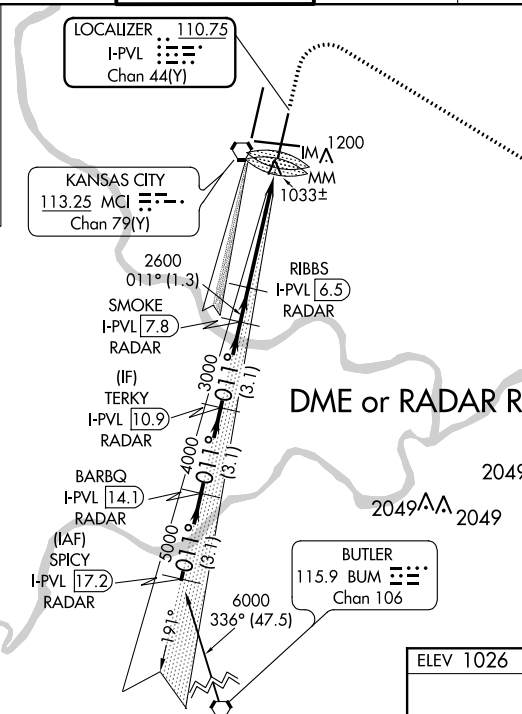
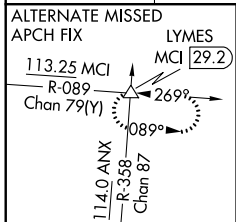
KANSAS CITY INTL (MCI)

Simultaneous approach authorized with Rwy 1L. DME or RADAR required. CAT II: RVR 1000 authorized with specific OPSPEC, MSPEC, or LOA approval and use of Autoland or HUD to touchdown.

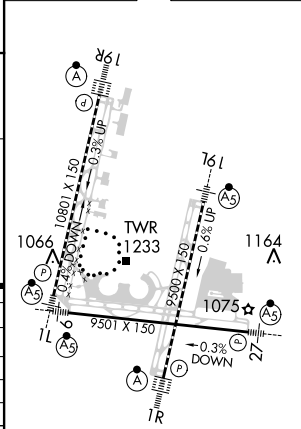
ALSIF-2

MISSED APPROACH: Climb to 1500 then climbing right turn to 4000 direct ANX VORTAC and hold.

D-ATIS 128.375	KANSAS CITY APP CON 120.95 318.1	INTERNATIONAL TOWER 128.2 254.25	GND CON 121.8	CLNC DEL 135.7	CPDLC
--------------------------	--------------------------------------------	--------------------------------------------	-------------------------	--------------------------	-------



ELEV 1026 **D** TDZE 1017



CATEGORY	A	B	C	D
S-ILS 1R	CAT II RA 111/12 100 DA 1117			
S-ILS 1R	CAT IIIa RVR 07			
S-ILS 1R	CAT IIIb RVR 06			
S-ILS 1R	CAT IIIc NA			

CATEGORY II & III ILS - SPECIAL AIRCREW & AIRCRAFT CERTIFICATION REQUIRED

HIRL all Rwys
TDZ/CL Rwys 1L, 1R, 19L and 19R

NC-3, 07 OCT 2021 to 04 NOV 2021

NC-3, 07 OCT 2021 to 04 NOV 2021