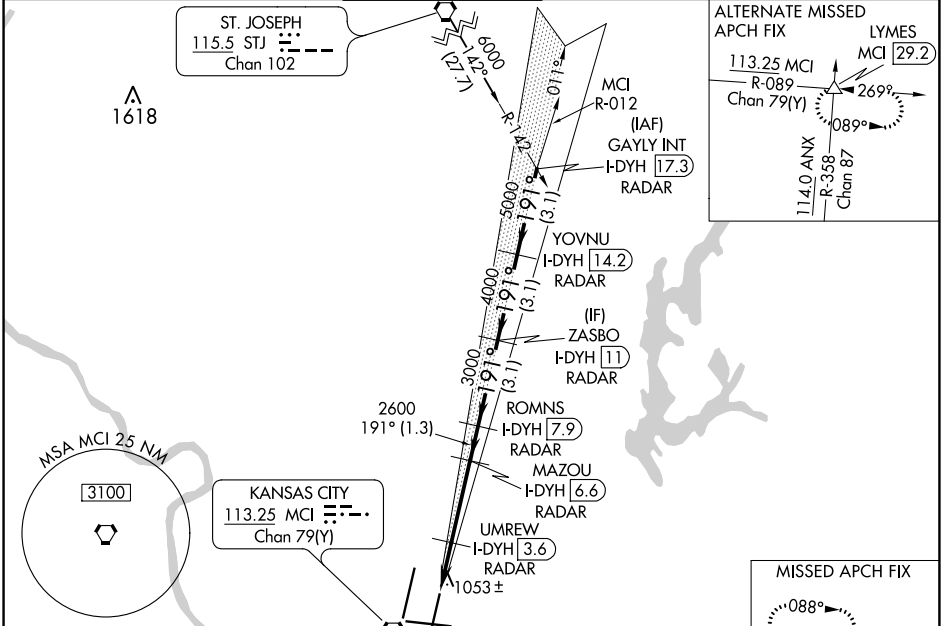


LOC/DME I-DYH <b>109.55</b> Chan 32 (Y)	APP CRS <b>191°</b>	Rwy Idg TDZE Apt Elev	<b>9500</b> <b>995</b> <b>1027</b>
---	------------------------	-----------------------------	--

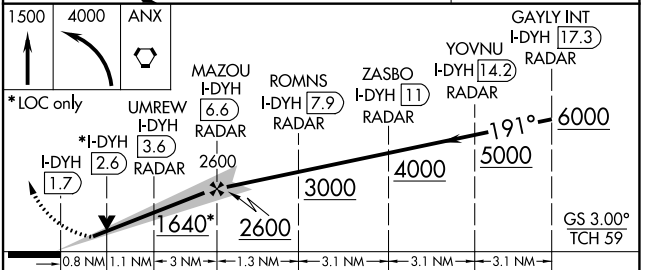
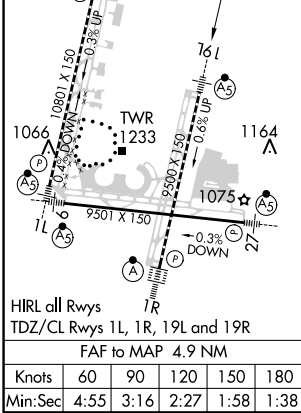
# ILS or LOC RWY 19L

KANSAS CITY INTL (MCI)

Simultaneous approach authorized. DME or RADAR required.			MALSR 	MISSED APPROACH: Climb to 1500 then climbing left turn to 4000 direct ANX VORTAC and hold.		
D-ATIS <b>128.375</b>	KANSAS CITY APP CON <b>120.95 318.1</b>	INTERNATIONAL TOWER <b>128.2 254.25</b>	GND CON <b>121.8</b>	CLNC DEL <b>135.7</b>	CPDLC	



ELEV 1027	D TDZE 995
-----------	------------



CATEGORY	A		B		C		D	
S-ILS 19L	1195/18				200 (200-1/2)			
S-LOC 19L	1300/24		305 (300-1/2)		1300/26		305 (300-1/2)	
CIRCLING	1540-1		513 (600-1)		1540-1 1/2		513 (600-1 1/2)	
					1580-2		553 (600-2)	

NC-3, 07 OCT 2021 to 04 NOV 2021

NC-3, 07 OCT 2021 to 04 NOV 2021