

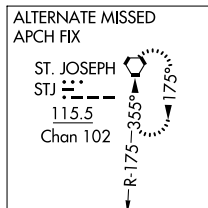
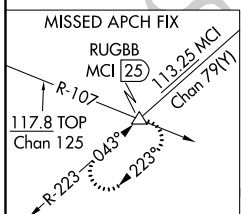
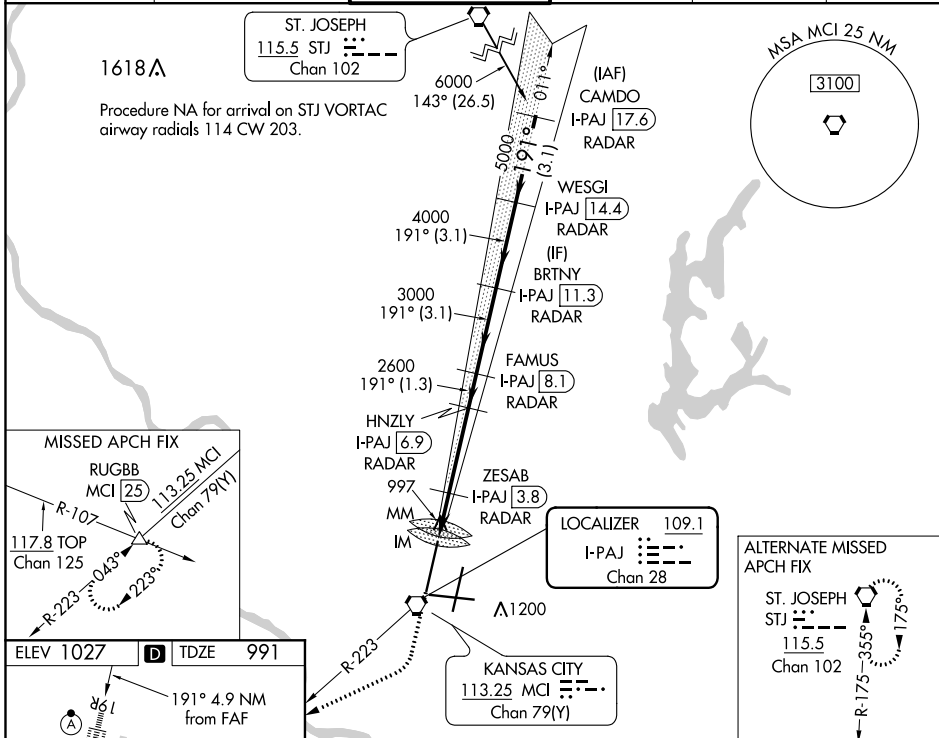
I LS or LOC RWY 19R

KANSAS CITY INTL (MCI)

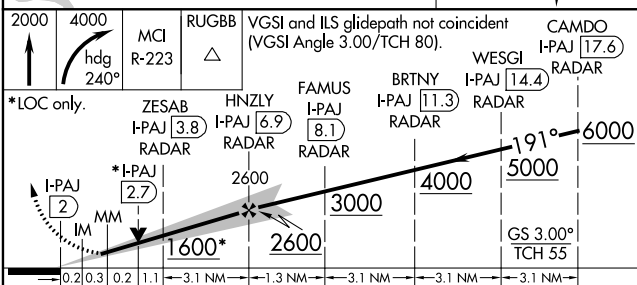
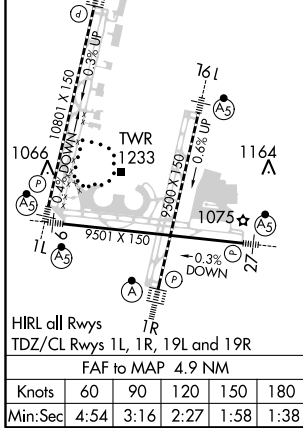
LOC/DME I-PAJ 109.1 Chan 28	APP CRS 191°	Rwy Idg 10801 TDZE 991 Apt Elev 1027
--	------------------------	---

DME or RADAR required.	ALSIF-2 	MISSED APPROACH: Climb to 2000 then climbing right turn to 4000 on heading 240° and on MCI VORTAC R-223 to RUGBB INT/MCI 25 DME and hold.
Simultaneous approach authorized. For inop ALS, increase S-ILS 19R Cat E visibility to RVR 4000 and S-LOC 19R Cat C/D/E to RVR 4500.		

D-ATIS 128.375	KANSAS CITY APP CON 120.95 318.1	INTERNATIONAL TOWER 128.2 254.25	GND CON 121.8	CLNC DEL 135.7	CPDLC
--------------------------	--	---	-------------------------	--------------------------	-------



ELEV 1027	D	TDZE 991
-----------	----------	----------



CATEGORY	A	B	C	D	E
S-ILS 19R	1191/18 200 (200-1/2)				
S-LOC 19R	1280/24 289 (300-1/2)	1280/40 289 (300-3/4)			
CIRCLING	1540-1 513 (600-1)	1540-1 1/2 513 (600-1 1/2)	1580-2 553 (600-2)		

NC-3, 07 OCT 2021 to 04 NOV 2021

NC-3, 07 OCT 2021 to 04 NOV 2021