

LOC/DME I-PVL 110.75 Chan 44 (Y)	APP CRS 011°	Rwy Idg TDZE 1017 Apt Elev 1026
---	------------------------	---

ILS or LOC RWY 1R

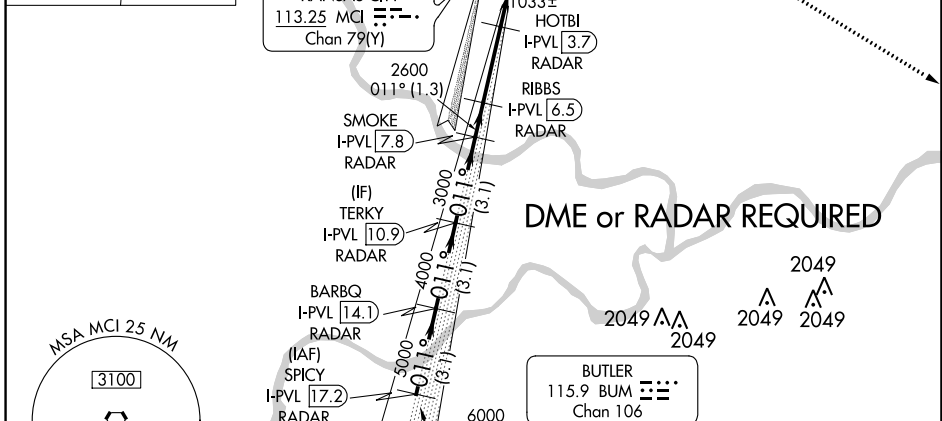
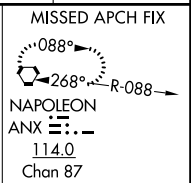
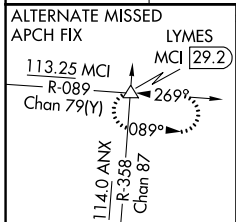
KANSAS CITY INTL (MCI)

Simultaneous approach authorized with Rwy 1L. DME or RADAR required. For inop ALSF, increase S-LOC 1R Cat C/D visibility to RVR 5000.

ALSF-2

MISSED APPROACH: Climb to 1500 then climbing right turn to 4000 direct ANX VORTAC and hold.

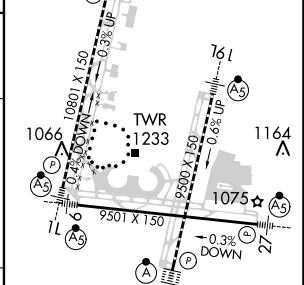
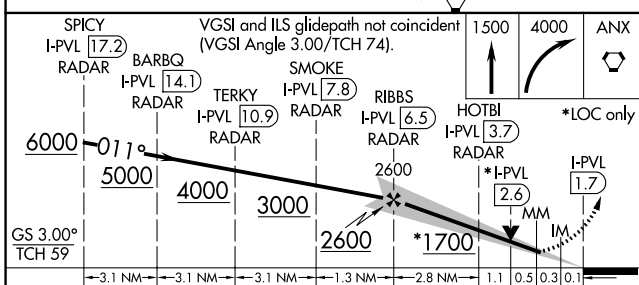
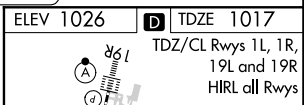
D-ATIS 128.375	KANSAS CITY APP CON 120.95 318.1	INTERNATIONAL TOWER 128.2 254.25	GND CON 121.8	CLNC DEL 135.7	CPDLC
--------------------------	--	--	-------------------------	--------------------------	-------



NC-3, 07 OCT 2021 to 04 NOV 2021

NC-3, 07 OCT 2021 to 04 NOV 2021

ELEV 1026	TDZE 1017
-----------	-----------



CATEGORY	A	B	C	D
S-ILS 1R		1217/18	200 (200-½)	
S-LOC 1R	1360/24	343 (400-½)	1360/30	343 (400-¾)
CIRCLING	1540-1	514 (600-1)	1540-1½	1580-2 514 (600-1½) 554 (600-2)

FAF to MAP 4.8 NM					
Knots	60	90	120	150	180
Min:Sec	4:48	3:12	2:24	1:55	1:36