

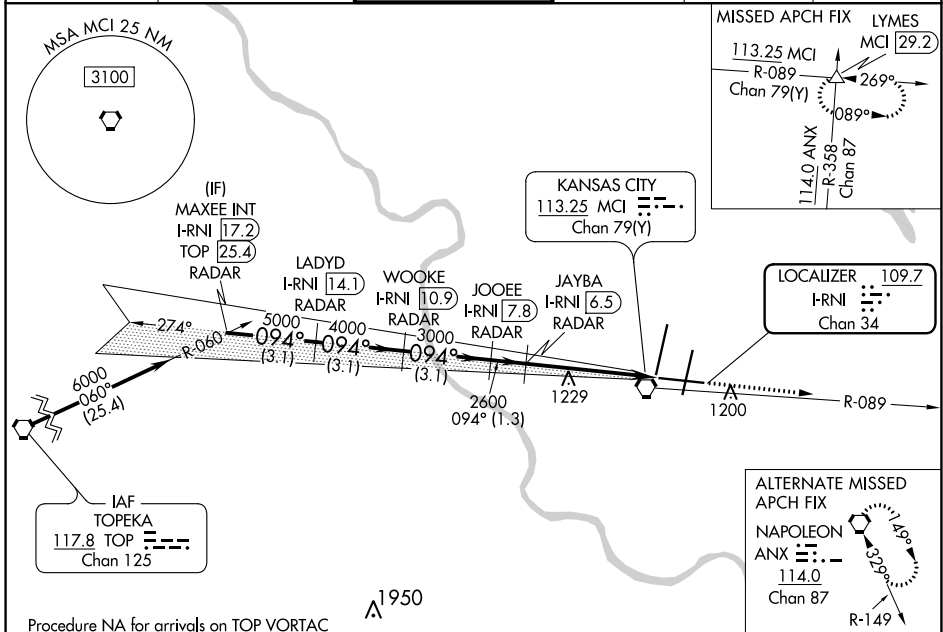
LOC/DME I-RNI <b>109.7</b> Chan <b>34</b>	APP CRS <b>094°</b>	Rwy Idg TDZE Apt Elev <b>9501</b> <b>1015</b> <b>1026</b>
---	------------------------	--

# ILS or LOC RWY 9

KANSAS CITY INTL (MCI)

<p>▼ Inop table does not apply to S-ILS 9. DME or RADAR required. For inop MALSR, increase S-LOC 9 Cat A/B visibility to RVR 5000 and Cat C/D visibility to 1½ mile.</p>	<p>MALSR </p>	<p>MISSED APPROACH: Climb to 4000 on MCI R-089 to LYMES INT/MCI 29.2 DME and hold.</p>
--	-------------------	--

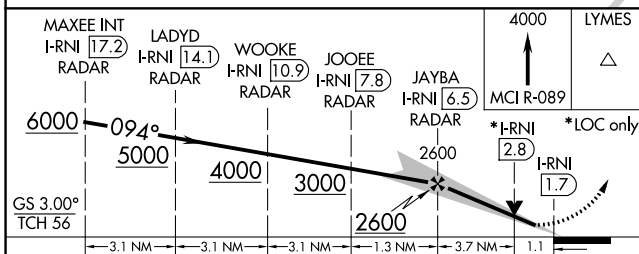
D-ATIS <b>128.375</b>	KANSAS CITY APP CON <b>120.95 318.1</b>	INTERNATIONAL TOWER <b>128.2 254.25</b>	GND CON <b>121.8</b>	CLNC DEL <b>135.7</b>	CPDLC
--------------------------	--	--	-------------------------	--------------------------	-------



NC-3, 07 OCT 2021 to 04 NOV 2021

NC-3, 07 OCT 2021 to 04 NOV 2021

## DME or RADAR REQUIRED



CATEGORY	A	B	C	D
S-ILS 9		1265/40	250 (300-¾)	
S-LOC 9		1420/40	405 (400-¾)	
CIRCLING	1540-1	514 (600-1)	1540-1½ 514 (600-1½)	1580-2 554 (600-2)

ELEV 1026 TDZE 1015

HIRL all Rwys TDZ/CL Rwys 1L, 1R, 19L and 19R

1066  
1075  
1164  
1140  
9501 X 150  
9500 X 150  
9501 X 150

TWR 1233

094° 4.8 NM from FAF

FAF to MAP 4.8 NM

Knots	60	90	120	150	180
Min:Sec	4:48	3:12	2:24	1:55	1:36