


| | | |
|-------------|----------|-------------|
| APP CRS | Rwy Idg | 9500 |
| 191° | TDZE | 994 |
| | Apt Elev | 1026 |

RNAV (RNP) Z RWY 19L

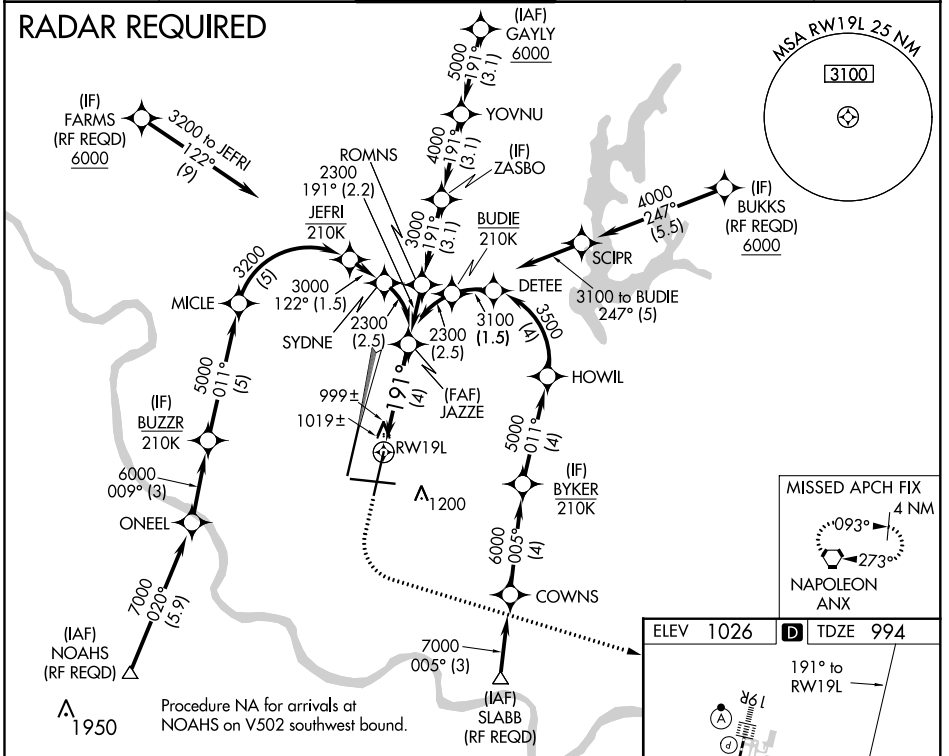
KANSAS CITY INTL (MCI)

▼ For uncompensated Baro-VNAV systems, procedure NA below -20°C (-4°F) or above 54°C (130°F). For inop MALS, increase RNP 0.20 all Cats visibility to RVR 5000 and RNP 0.30 all Cats visibility to RVR 6000. GPS required. Simultaneous approach authorized with Rwy 19R, except for arrivals at NOAHS, FARMS, BUKKS, and SLABB. Use of FD or AP providing RNAV track guidance required during simultaneous operations.

MALS

MISSED APPROACH:
 Climb to 1500 then climbing left turn to 4000 direct ANX VORTAC and hold.




| | | | | | |
|--------------------------|--|--|-------------------------|--------------------------|-------|
| D-ATIS 128.375 | KANSAS CITY APP CON 120.95 318.1 | INTERNATIONAL TOWER 128.2 254.25 | GND CON 121.8 | CLNC DEL 135.7 | CPDLC |
|--------------------------|--|--|-------------------------|--------------------------|-------|

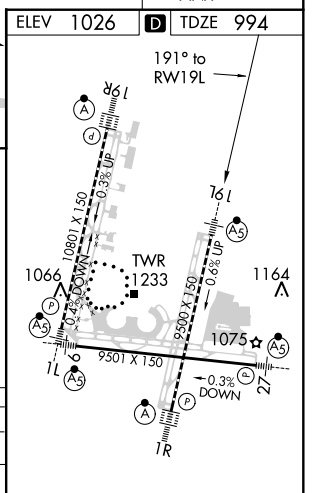
RADAR REQUIRED



NC-3, 07 OCT 2021 to 04 NOV 2021

NC-3, 07 OCT 2021 to 04 NOV 2021

| | | | | |
|---|---|---|-------------|---|
| 1500 | 4000 | ANX | | |
|  |  |  | | |
| RWY 19L | | | | |
| See Planview for multiple IF locations. | | | | |
| 4 NM | | | | |
| CATEGORY | A | B | C | D |
| RNP 0.20 DA | | 1306/26 | 312 (300-½) | |
| RNP 0.30 DA | | 1361/35 | 367 (400-¾) | |



AUTHORIZATION REQUIRED

HIRL all Rwws
 TDZ/CL Rwws 1L, 1R, 19R and 19L