


APP CRS <b>191°</b>	Rwy Idg <b>10801</b>
	TDZE <b>989</b>
	Apt Elev <b>1026</b>

# RNAV (RNP) Z RWY 19R

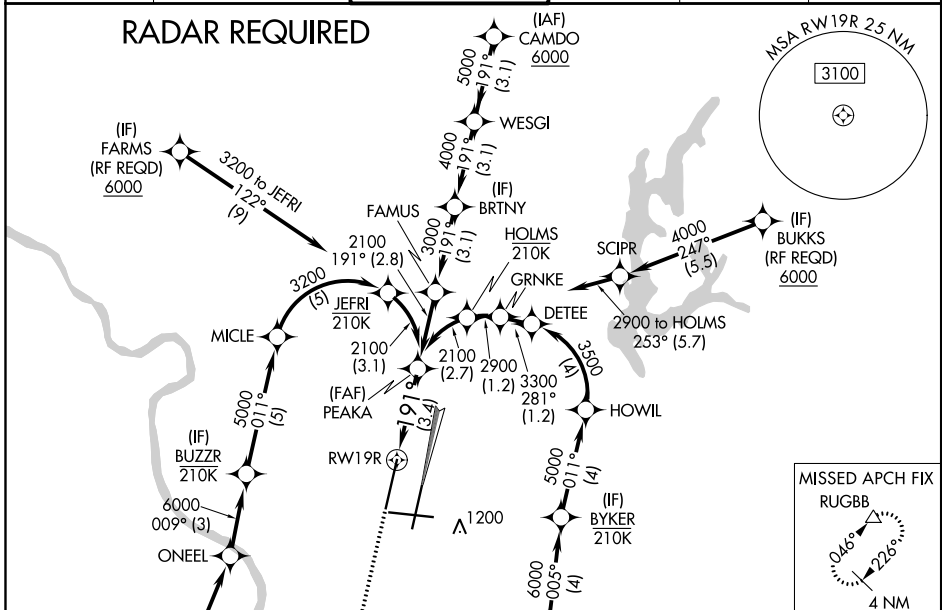
KANSAS CITY INTL (MCI)

▼ For uncompensated Baro-VNAV systems, procedure NA below -20°C (-4°F) or above 54°C (130°F). For inop. ALSF, increase RNP 0.15 all Cats visibility to RVR 5000 and RNP 0.30 all Cats visibility to 1%. GPS required. Simultaneous approach authorized with Rwy 19L, except for arrivals at NOAHS, FARMS, BUKKS, and SLABB. Use of FD or AP providing RNAV track guidance required during simultaneous operations.

ALSF-2  MISSED APPROACH: Climb to 2000 then climbing right turn to 4000 direct RUGBB and hold.

D-ATIS <b>128.375</b>	KANSAS CITY APP CON <b>120.95 318.1</b>	INTERNATIONAL TOWER <b>128.2 254.25</b>	GND CON <b>121.8</b>	CLNC DEL <b>135.7</b>	CPDLC
--------------------------	--	--	-------------------------	--------------------------	-------

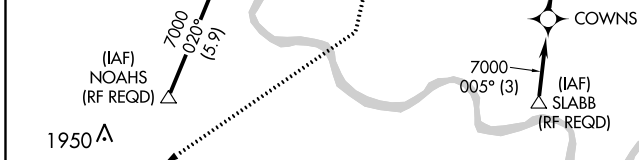
## RADAR REQUIRED




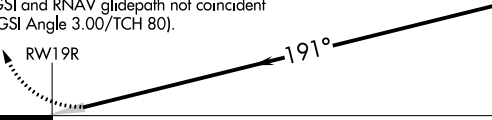


NC-3, 07 OCT 2021 to 04 NOV 2021

NC-3, 07 OCT 2021 to 04 NOV 2021

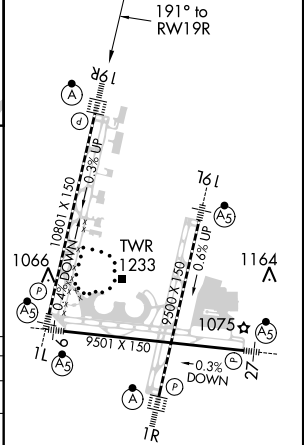
ELEV 1026	<b>D</b> TDZE 989
-----------	-------------------



2000	4000	RUGBB	See Planview for multiple IF locations.	PEAKA
				2100
VGSI and RNAV glidepath not coincident (VGSI Angle 3.00/TCH 80).				
RWY 19R 				
3.4 NM				

CATEGORY	A	B	C	D
RNP 0.15 DA		1321/30	332 (300-5%)	
RNP 0.30 DA		1415/50	426 (400-1)	

## AUTHORIZATION REQUIRED



HIRL all Rwys  
TDZ/CL Rws 1L, 1R, 19R and 19L