

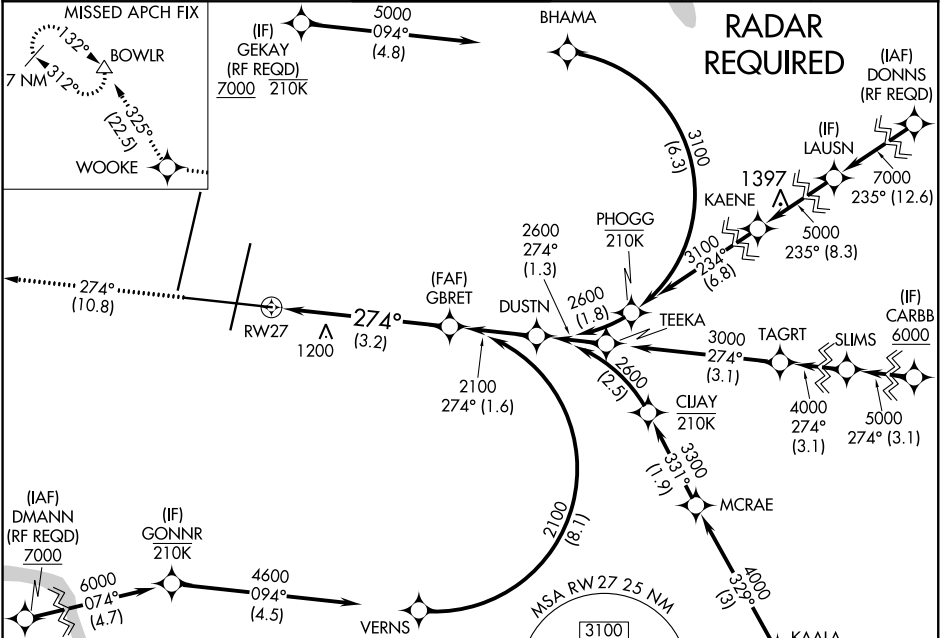
RNAV (RNP) Z RWY 27 KANSAS CITY INTL (MCI)

APP CRS	Rwy Idg	9501
274°	TDZE	1026
	Apt Elev	1026

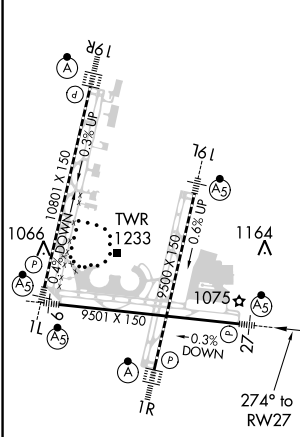
▼ For uncompensated Baro-VNAV systems, procedure NA below -20°C (-4°F) or above 54°C (130°F). For inop MALSR, increase RNP 0.15 all Cats visibility to 1¼ and RNP 0.30 all Cats visibility to 1½. GPS required.

MALSR MISSED APPROACH: Climb to 4000 on track 274° to WOOKIE and on track 325° to BOWLR and hold.

D-ATIS 128.375	KANSAS CITY APP CON 120.95 318.1	INTERNATIONAL TOWER 128.2 254.25	GND CON 121.8	CLNC DEL 135.7	CPDLC
--------------------------	--	---	-------------------------	--------------------------	-------



ELEV	1026	TDZE	1026
------	-------------	------	-------------



HIRL all Rwys
TDZ/CL Rwys 1L, 1R, 19R and 19L

4000 ↑	tr 274°	WOOKIE ◆	tr 325°	BOWLR △	GBRET 2100
VGSI and RNAV glidepath not coincident (VGSI Angle 3.00/TCH 72).					
See Planview for multiple IF locations.					
3.2 NM					
GP 3.00° TCH 49					

CATEGORY	A	B	C	D
RNP 0.15 DA		1410/45	384 (400-¾)	
RNP 0.30 DA		1511/60	485 (500-1¼)	

AUTHORIZATION REQUIRED

NC-3, 07 OCT 2021 to 04 NOV 2021

NC-3, 07 OCT 2021 to 04 NOV 2021