

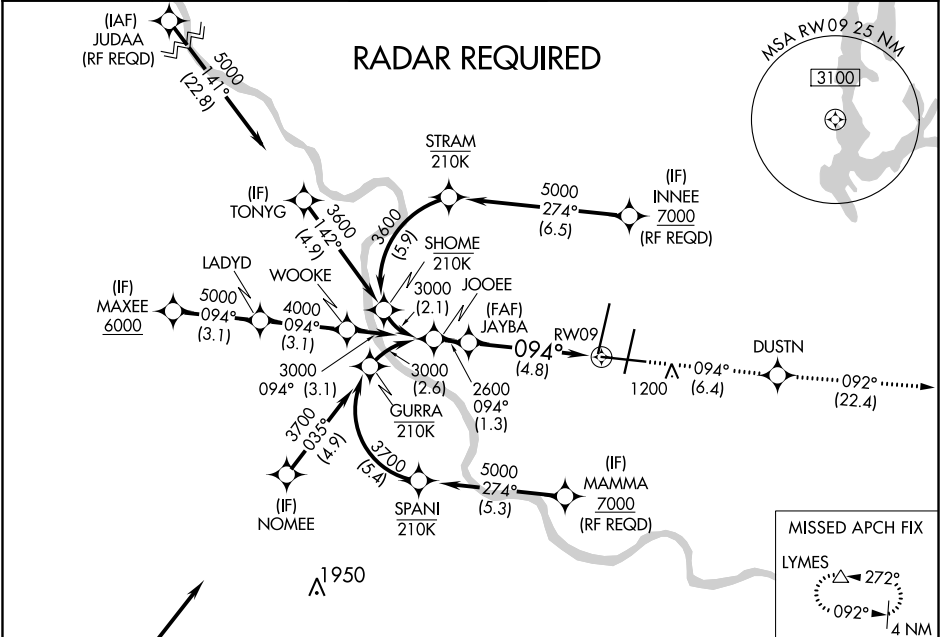
APP CRS <b>094°</b>	Rwy Idg TDZE Apt Elev	<b>9501</b> <b>1015</b> <b>1026</b>
------------------------	-----------------------------	---

# RNAV (RNP) Z RWY 9

KANSAS CITY INTL (MCI)

<p><b>▽</b> For uncompensated Baro-VNAV systems, procedure NA below -20°C (-4°F) or above 54°C (130°F). For inop MALS/R, increase RNP 0.30 visibility to RVR 6000. GPS required.</p>	<p>MALS/R</p>	<p>MISSED APPROACH: Climb to 4000 on track 094° to DUSTN and on track 092° to LYMES and hold.</p>
--	---------------	---

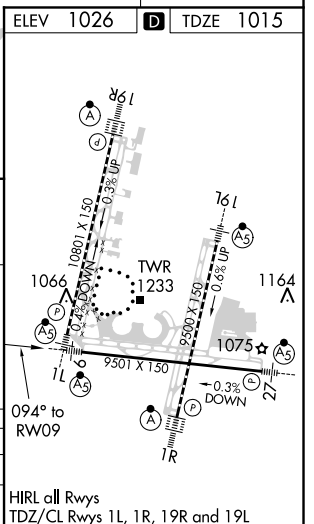
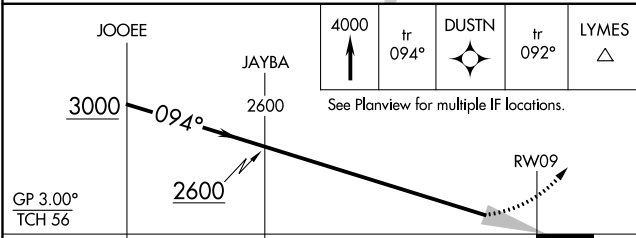
D-ATIS <b>128.375</b>	KANSAS CITY APP CON <b>120.95 318.1</b>	INTERNATIONAL TOWER <b>128.2 254.25</b>	GND CON <b>121.8</b>	CLNC DEL <b>135.7</b>	CPDLC
--------------------------	--	--	-------------------------	--------------------------	-------



NC-3, 07 OCT 2021 to 04 NOV 2021

NC-3, 07 OCT 2021 to 04 NOV 2021

ELEV 1026	<b>D</b> TDZE 1015
-----------	--------------------



CATEGORY	A	B	C	D
RNP 0.30 DA		1393/40	378 (400-¾)	

## AUTHORIZATION REQUIRED

HIRL all Rwys  
TDZ/CL Rwys 1L, 1R, 19R and 19L