

WAAS CH 42808 W01B	APP CRS 011°	Rwy ldg 10801 TDZE 1014 Apt Elev 1027
--	------------------------	--

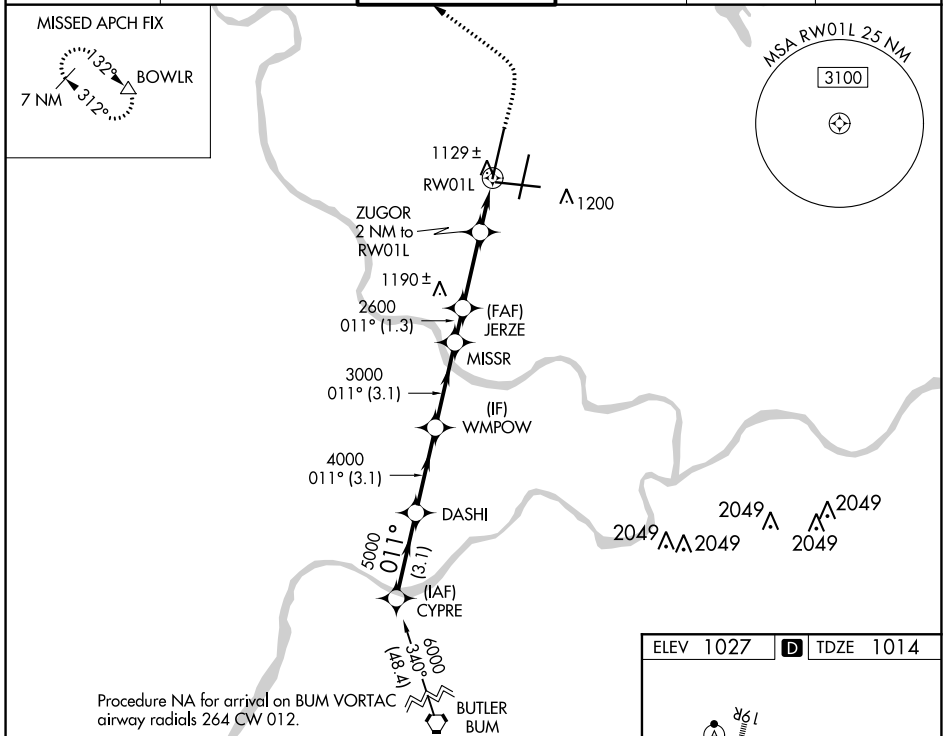
RNAV (GPS) Y RWY 1L

KANSAS CITY INTL (MCI)

For uncompensated Baro-VNAV systems, LNAV/VNAV NA below -18°C (0°F) or above 54°C (130°F). Simultaneous approach authorized. Use of FD or AP providing RNAV track guidance required during simultaneous operations. LNAV procedure NA during simultaneous operations. DME/DME RNP-0.3 NA. For Inop ALS, increase LNAV Cat C/D visibility to RVR 5500.

MALS/R
MISSED APPROACH: Climb to 2000 then climbing left turn to 4000 direct BOWL R and hold.

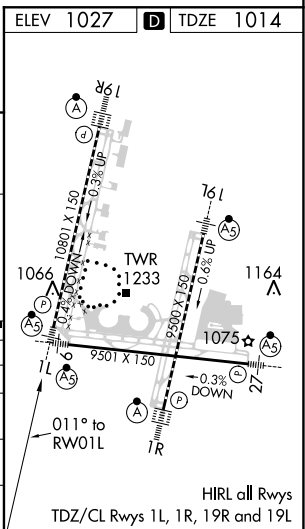
D-ATIS 128.375	KANSAS CITY APP CON 120.95 318.1	INTERNATIONAL TOWER 128.2 254.25	GND CON 121.8	CLNC DEL 135.7	CPDLC
--------------------------	--	--	-------------------------	--------------------------	-------



CYPRE VGSI and RNAV glidepath not coincident (VGSI Angle 3.00/TCH 78).

6000	5000	4000	3000	2600	2000	4000	BOWL R
GP 3.00° TCH 57	011°						
	3.1 NM	3.1 NM	3.1 NM	1.3 NM	2.8 NM	1.1 NM	0.9 NM
CATEGORY	A		B		C	D	
LPV DA	1214/18		200 (200-½)				
LNAV/VNAV DA	1331/24		317 (400-½)				
LNAV MDA	1380/24		366 (400-½)		1380/35	366 (400-¾)	
CIRCLING	1540-1		513 (600-1)		1540-1½	1580-2	
					513 (600-1½)	553 (600-2)	

ZUGOR 2 NM to RW01L *LNAV only *0.9 NM to RW01L



NC-3, 07 OCT 2021 to 04 NOV 2021

NC-3, 07 OCT 2021 to 04 NOV 2021